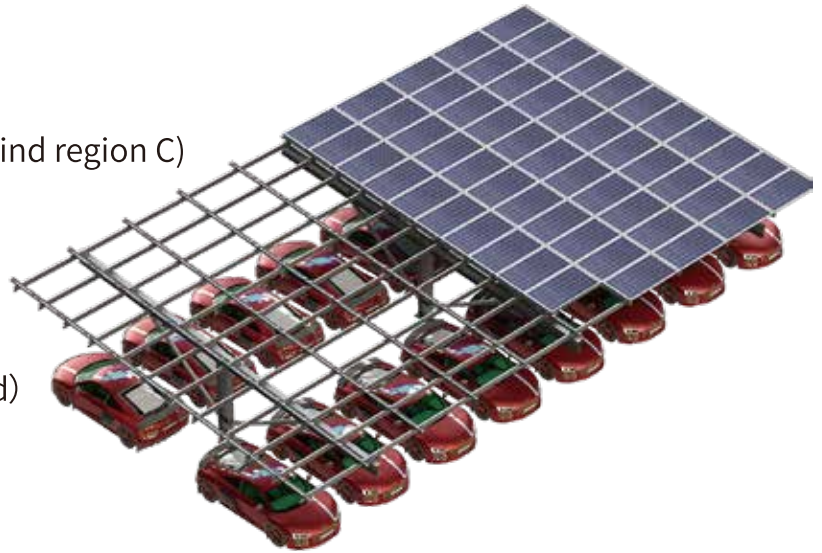


STEEL CARPORT MOUNTING SYSTEM ▶

Design Conditions

- Application: Flat ground
- Wind speed: Up to 64m/s(Australia wind region C)
- Snow load: 150cm
- PV module: Framed/unframed
- Layout way: Landscape
- Elevation angle: $\leq 15^\circ$ (Recommended)
- Material: Q235B+Q355B
- Foundation: Concrete Block
- Standard: AS/NZS 1170.2:2011, JIS C 8955:2017, EN 1090
- Warranty: 10years
- Surface treatment: Anodizing+Hot Dip Galvanized 65 μ m
- Options: Waterproof and Non-waterproof



Horizontal
Water Rail



Mid Clamp



Pole



Purlin



Rail Clamp



Rear Support



Beam



End Clamp