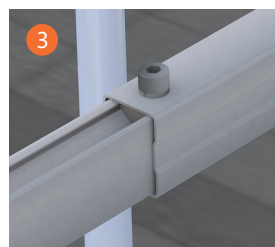
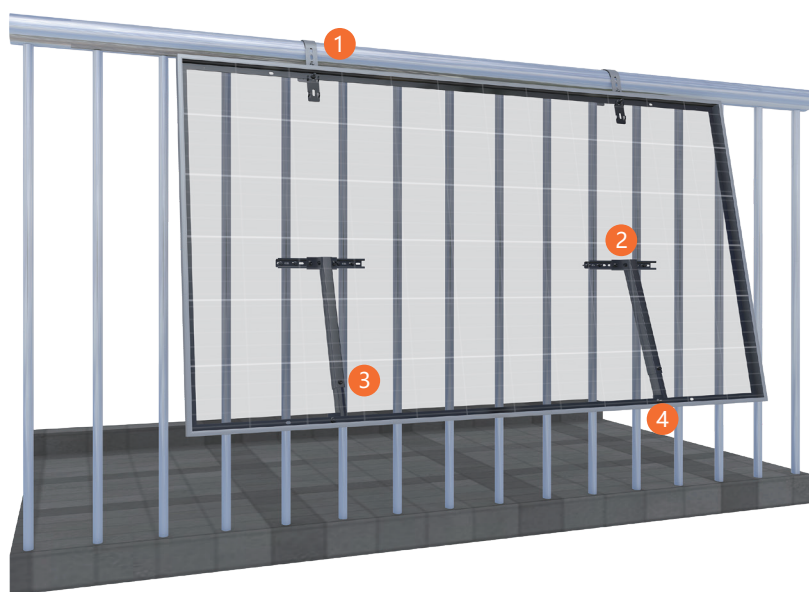


## Balcony Solar Mounting Structure

**Standard:** JIS C 8955: 2017;  
AS/NZS 1170;  
DIN1055;  
ASCE/SEI 7-05;  
International Building Code: IBC 2009



# Hanging Balcony Solar Mounting Structure



The hanging balcony solar mounting structure is a high-quality household photovoltaic mounting structure system. By connecting the photovoltaic modules with zinc-aluminum-magnesium hooks and hanging and fixing the modules on the balcony fence, the system is easy to build. It can meet the installation and construction of household photovoltaic systems in general apartments. Even in rental apartments, photovoltaic systems can be easily installed or disassembled by themselves. Let more people enjoy the convenience brought by photovoltaics. It can be installed with any fence balcony fence, exposed railing, garden fence and more.

## Parameter

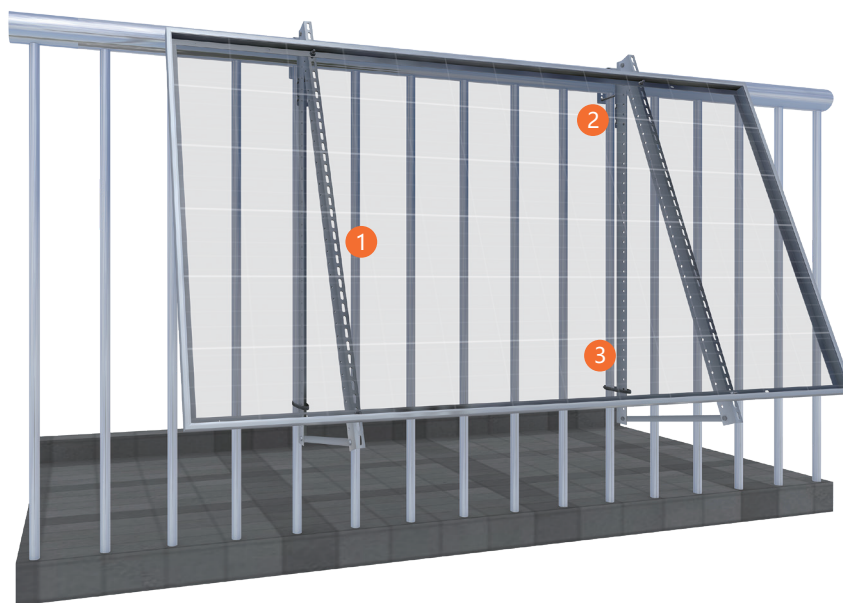
Module Orientation	Landscape
Module Type	Framed
Wind Speed	60m/s
Tilt Angle	10°- 45°、 Customized
Material	AL6005-T5、 SUS304、 ZAM275

**Note:** Can be customized according to actual needs.

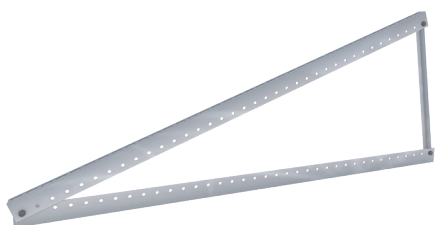
## Advantage

- Small size, space saving :** It is convenient to install a single photovoltaic panel, and the installation space can be adjusted according to the size of the module.
- Easy installation :** The bracket accessories are small and simple, highly pre-assembled from the factory, and only need to be fixed on the balcony for installation, achieving fast, simple and cost-effective installation, which is essential for residential projects.
- High-quality profiles, anti-rust and corrosion-resistant :** The product material is composed of aluminum alloy 6005-T5, stainless steel SUS304 and ZAM, all of which are highly corrosion-resistant materials, which can ensure the service life of the product even in highly corrosive areas.
- Flexible and adjustable :** Adjustable aluminum alloy support feet can flexibly adjust the installation angle of components.
- Excellent compatibility :** It is fully compatible with the specifications of components with frames in the market, and is suitable for different types of metal guardrails.
- Long service life :** 25-year service life, 12-year product warranty.

# Aluminum Triangle Balcony Solar Mounting Structure



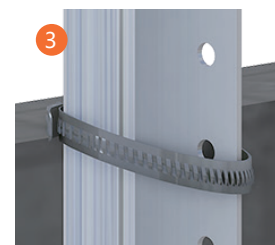
1



2



3



Aluminum triangle balcony solar mounting structure is used in a wider range of scenarios, and can be applied to the installation of photovoltaic systems in daily fenced balconies, courtyard walls, roofs and other installation scenarios. Compared with the traditional rooftop photovoltaic system, the triangle balcony solar mounting structure makes residential photovoltaic installation more possible. The stable and solid triangular structure allows more apartment owners or tenants to enjoy the convenient life brought by photovoltaics.

## Parameter

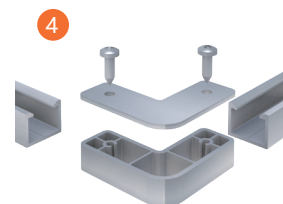
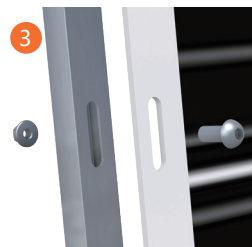
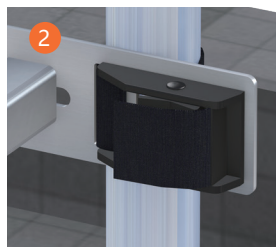
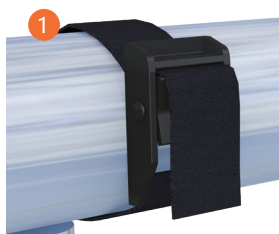
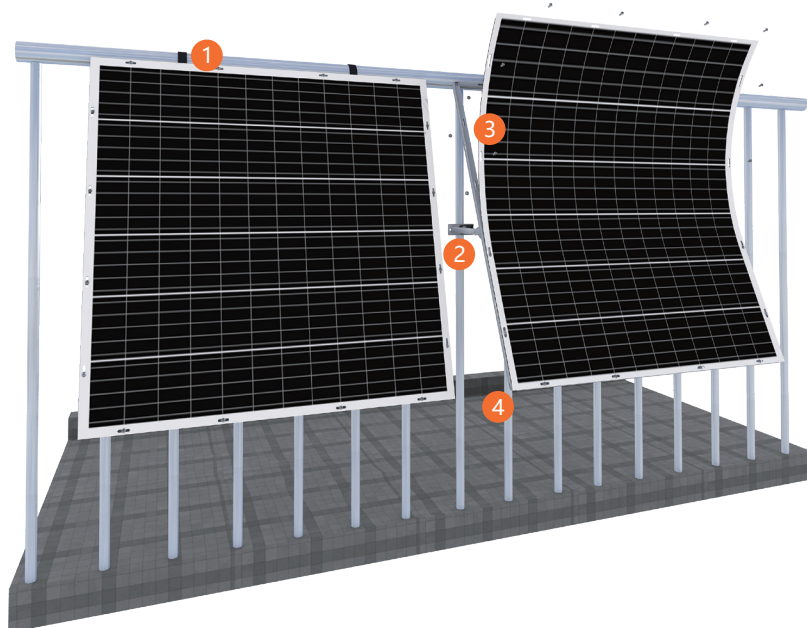
Module Orientation	Landscape
Module Type	Framed
Wind Speed	60m/s
Tilt Angle	10°- 45°、 Customized
Material	AL6005-T5、 SUS304、 ZAM275

Note: Can be customized according to actual needs.

## Advantage

- Easy installation** : The perforated corner aluminum profiles are matched with bolts to easily complete the installation of photovoltaic modules.
- High-quality profiles, anti-rust and corrosion-resistant** : The high-quality aluminum alloy profile 6005-T5 has the function of anti-rust and corrosion resistance to ensure the service life of the product.
- Excellent compatibility** : It is fully compatible with the specifications of components with frames in the market, and is suitable for different types of metal guardrails.
- Flexible and adjustable** : Porous corner aluminum support strips can realize multi-angle and multi-directional flexible installation of photovoltaic modules.
- Wide range of applications**: It can be installed on apartment balconies, courtyard walls, roofs and other places.

## Balcony Solar Mounting Structure for Flexible Module



With the rise of solar balcony, SOEASY has developed mounting brackets for different types of solar modules. This is a balcony bracket specially designed for installing flexible module. The aluminum alloy frame supports the flexible components, and the solid textile straps with adjustable support feet fix the overall photovoltaic components on the balcony fence. The whole installation process is smooth and convenient, which can meet the installation and construction of household photovoltaic systems in general apartments. Let more people enjoy the convenience brought by photovoltaics. Any fence balcony fence, exposed railing, garden fence and more can be installed.

### Parameter

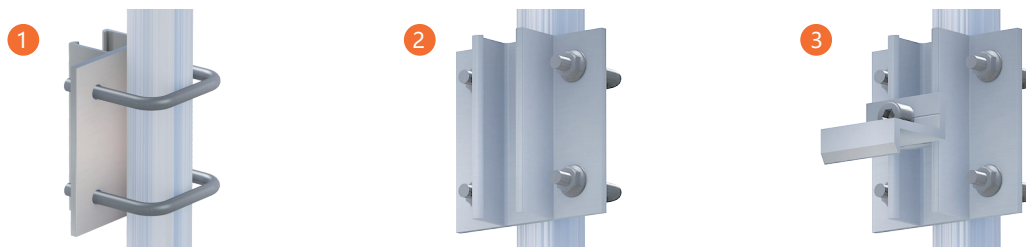
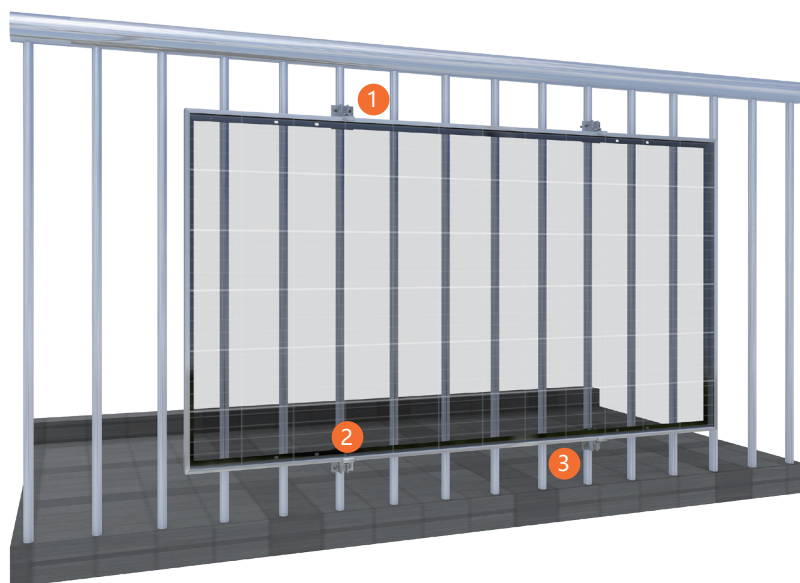
Module Orientation	Landscape 、 Portrait
Module Type	Flexible Framed Module with Holes
Wind Speed	46m/s
Tilt Angle	10°- 45°、 Customized
Material	AL6005-T5、 SUS304、 ZAM275

Note: Can be customized according to actual needs.

### Advantage

- Easy Installation** : The bracket accessories are small and simple, highly pre-assembled from the factory, and only need to be fixed on the balcony for installation, achieving fast, simple and cost-effective installation, which is essential for residential projects.
- High-quality profiles, anti-rust and corrosion-resistant** : The main material of the product is made of aluminum alloy 6005-T5, which is anti-rust and corrosion-resistant to ensure the service life of the product.
- Flexible and adjustable** : Adjustable aluminum alloy support feet can flexibly adjust the installation angle of components.
- Professional** : It is mainly designed for flexible board installation and is suitable for different types of metal guardrails.
- Safe and reliable** : The aluminum alloy frame fixes the flexible board, making the components safer and more secure.
- Protection balcony railing** : The flexible components are light in weight, combined with lightweight aluminum alloy brackets, to reduce the load pressure on the metal railings of the system as a whole.

# Fixed Balcony Solar Mounting Structure



The fixed balcony solar mounting structure is the most simple direct system in the SOEASY balcony support series. A photovoltaic module can be installed with only 4 micro-supports. The modules are fixed parallel to the balcony fence, which can easily meet the installation and construction of general apartment household photovoltaic systems. The extremely flexible installation method allows more people to enjoy the photovoltaic dividend. Any palisade balcony fencing, exposed railings, garden fencing and more can be installed.

## Parameter

Module Orientation	Landscape
Module Type	Framed
Wind Speed	60m/s
Tilt Angle	90°
Material	AL6005-T5、SUS304、ZAM275

Note: Can be customized according to actual needs.

## Advantage

- Small size, space saving** : It is convenient to install a single photovoltaic panel, and the installation space can be adjusted according to the size of the module.
- Minimal installation**: The bracket accessories are small and simple, realizing minimalist installation
- High-quality profiles, anti-rust and corrosion-resistant** : The product material is made of aluminum alloy 6005-T5, which has good rust and corrosion resistance.
- Flexible and adjustable** : The installation position can be adjusted flexibly.
- Excellent compatibility** : It is fully compatible with the specifications of components with frames in the market, and is suitable for different types of metal guardrails.
- Long service life** : 25-year service life, 12-year product warranty.