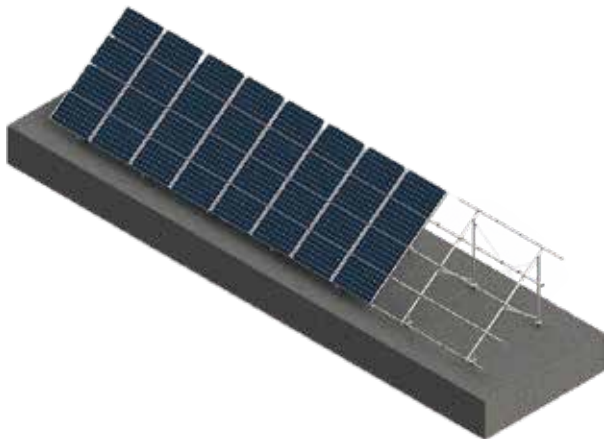


STEEL GROUND MOUNTING SYSTEM ▶

Design Conditions

- Application: Open terrain
- Wind speed: Up to 70m/s (Australia wind region D)
- Snow load: 200cm
- PV module: Framed/unframed
- Layout way: Landscape/portrait
- Elevation angle: $\leq 60^\circ$
- Material: Q235B/Q355B
- Foundation: Spiral/Cement foundation
- Standard: AS/NZS 1170.2:2011, JIS C 8955:2017, EN 1090
- Warranty: 10 years
- Surface treatment: Anodizing + Hot Dip Galvanized 80 μ m



Portrait



Landscape