

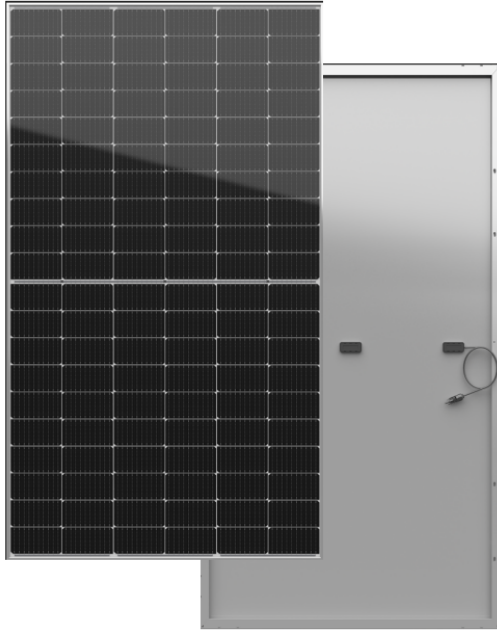
## FE60-18X(N) Full Black

High Efficiency ZERO LID and TOPCON cell with Half-cut Technology

NEW

Big Size: Cell 182\*91 Monocrystalline

**465W / 470W / 475W/ 480W/ 485W**



- **Module Efficiency:** 22.4%
- **No. of Cells:**  
120(6 x 20)
- **Weight:**  
23.0kg
- **Dimensions:**  
1909±2mmx1134±2mmx30mm



Jiangsu Xiehang Energy Technology Co.Ltd  
www.xiehangenergy.com

Factory: FELLOW ENERJI A.Ş.  
Factory: CHEN GUNES ENERJISI SANAYI VE  
TICARET LIMITED SIRKETI  
Factory: Jiangsu Xiehang Energy Technology Co.Ltd



**ZERO LID**(Light Induced Degradation)

N-type solar cell has no LID naturally which can increase power generation



**10-30% Additional Power Generation**

10-30% additional power generation comparing with conventional P-type module

**12Ys**

Products Warranty



**Lower LCOE**  
Higher power output and lower BOS cost  
Better Weak Illumination Response  
Higher power output even under

**30Ys**

Warranty on power output



**Better Temperature Coefficient**  
Higher power generation under normal working conditions

**EL**

Microcrack resistant highperformance transparent backsheet structure enhance reliability, triple EL tested of high quality control.



Entire module certified to with stand extreme wind (2400 Pa) and snow loads (5400 Pa)

**5W**

Positive tolerance 0/+5W guaranteed

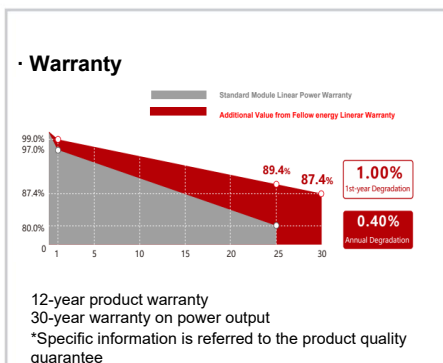
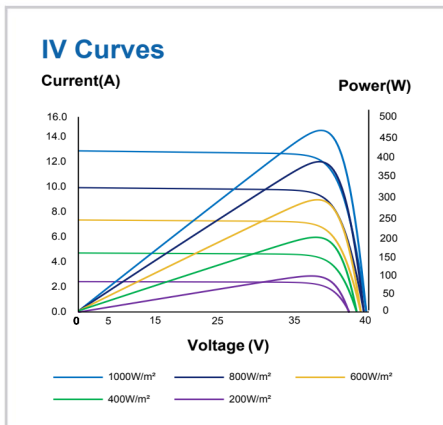
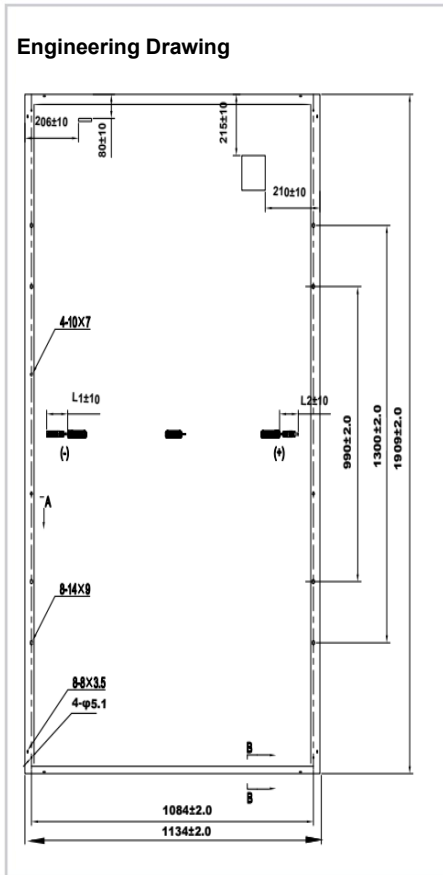
**PID**

PID Resistant

### Comprehensive and first-rate certification system

IEC61215: 2016, IEC61730: 2016 Latest Standard ISO14001 and ISO45001, meeting the highest international standards Strict quality control





### Electrical Characteristics (STC)

Module Type	FE60-18X (N)				
Maximum Power(Pmax)	465W	470W	475W	480W	485W
Open- Circuit Voltage(Voc)	42.3V	42.4V	42.5V	42.6V	42.7V
Short- Circuit Current(Isc)	14.07A	14.15A	14.23A	14.31A	14.39A
Maximum Power Voltage(Vmp)	35.0V	35.2V	35.4V	35.6V	35.8V
Maximum Power Current(Imp)	13.30A	13.37A	13.43A	13.50A	13.56A
Module Efficiency(%)	21.5%	21.7%	22.0%	22.2%	22.4%
Power Tolerance	0 ~ +5W				
Maximum System Voltage	1500V DC(IEC)				
Maximum Series Fuse Rating	25A/30A				
Operating Temperature	-40°C TO +85°C				

\*STC: AM 1.5, Irradiance 1000W/m<sup>2</sup>, module temperature 25°C

### Electrical Characteristics(NMOT)

Module Type	FE60-18X(N)				
Maximum Power(Pmax)	350W	353W	357W	361W	365W
Open Circuit Voltage(Voc)	40.1V	40.25V	40.41V	40.57V	40.73V
Short Circuit Current(Isc)	11.36A	11.42A	11.49A	11.55A	11.61A
Maximum Power Voltage(Vmp)	32.77V	32.94V	33.10V	33.27V	33.43V
Maximum Circuit Current(Imp)	10.67A	10.73A	10.79A	10.85A	10.92A

NMOT 45°C±2°C

\*NMOT: Irradiance 800W/m<sup>2</sup>, ambient temperature 20°C, wind speed 1m/s

Temperature Coefficient of Pmax	Y(Pm)	-0.29%/°C
Temperature Coefficient of Voc	β(Voc)	-0.23%/°C
Temperature Coefficient of Isc	α(Isc)	+0.041%/°C

Solar Cells	Monocrystalline 182 x 91mm
No. of Cells	120 ( 6 × 120)
Dimensions	1909±2mm × 1134±2mm × 35mm
Weight	23.0kg
Front Glass	High transmission tempered glass; thickness; 3.2mm
Frame	Anodized aluminum alloy
Junction Box	IP68
Cable	4mm <sup>2</sup> (IEC);(+)-400mm(-)-200mm/length can be customized
Connectors	MC <sub>4</sub> / MC <sub>4</sub> compatible
Packaging Configuration	36pcs/box: 864pcs 40'HQ Container