

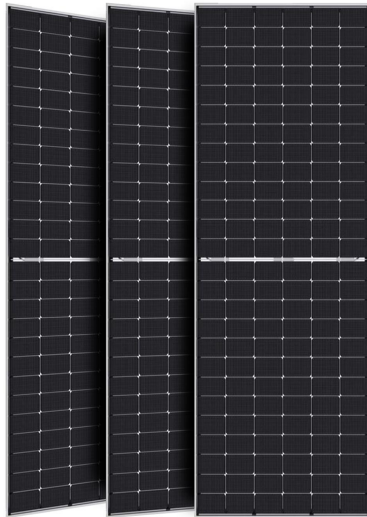
FE78-18X

High Efficiency Low LID with Half-cut Technology

NEW

Big Size: Cell 182*91 Monocrystalline

580W / 585W
590W / 595W / 600W



- **Module Efficiency:**
21.5%
- **No. of Cells:**
156(6 x 26)
- **Weight:**
29.5kg
- **Dimensions:**
2464mmx1134mmx35mm



Jiangsu Xiehang New Energy Intelligent Equipment Co.Ltd
www.xiehangenergy.com

Factory: HT FELLOW ENERJI A.Ş.
Factory: CHEN GUNES ENERJISI SANAYI VE
TICARET LIMITED SIRKETI



Half cut cell technology can reduce the internal power loss and improve component overall power. Excellent heat dissipation avoids hot spot production. Low LID Bifacial PERC with Half-cut Technology



10BB The optimized number and width of main gate lines, Maximize the light receiving area of components and Reduce component power consumption

12Ys

Products Warranty



Designed for high voltage systems of up to 1500 VDC, increasing the string length of solar systems and saving on BOS costs

25Ys

Warranty on power output



All the modules are sorted and packaged by amperage, reducing mismatch losses and maximizing system output.

EL

Microcrack resistant highperformance transparent backsheets structure enhance reliability, triple EL tested of high quality control.



Entire module certified to with stand extreme wind (2400 Pa) and snow loads (5400Pa)

5W

Positive tolerance 0/+5W guaranteed

PID

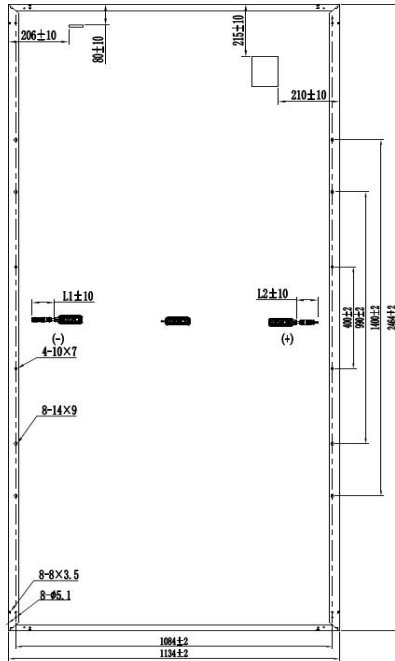
PID Resistant

Comprehensive and first-rate certification system

IEC61215 : 2016. IEC61730 : 2016 Latest Standard ISO9001, ISO14001 and ISO45001, meeting the highest international standards Strict quality control



Engineering Drawing



Electrical Characteristics (STC)

Module Type	FE78-18X				
Maximum Power(Pmax)	580W	585W	590W	595W	600W
Open Circuit Voltage(Voc)	53.49V	53.64V	53.79V	53.94V	54.09V
Short Circuit Current(Isc)	13.82A	13.89A	13.96A	14.03A	14.10A
Maximum Power Voltage(Vmp)	44.98V	45.13V	45.28V	45.43V	45.58V
Maximum Power Current(Impp)	12.90A	12.97A	13.04A	13.11A	13.17A
Module Efficiency(%)	20.8%	20.9%	21.1%	21.3%	21.5%
Power Tolerance	0 ~ +5W				
Maximum System Voltage	1500V DC(IEC)				
Maximum Series Fuse Rating	25A				
Operating Temperature	-40°C TO +85°C				

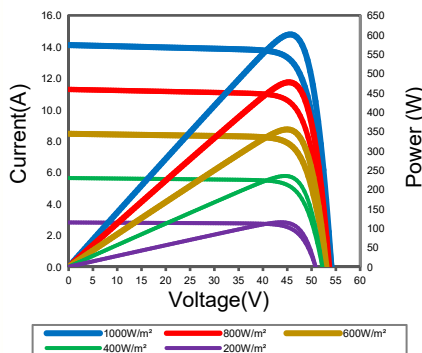
*STC: AM 1.5, Irradiance 1000W/m², module temperature 25°C

Electrical Characteristics(NMOT)

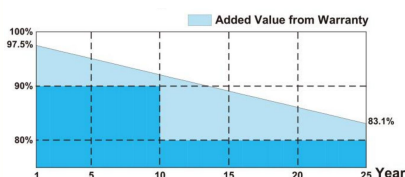
Module Type	FE78-18X				
Maximum Power(Pmax)	431W	435W	439W	443W	446W
Open Circuit Voltage(Voc)	50.70V	50.84V	50.98V	51.12V	51.27V
Short Circuit Current(Isc)	11.15A	11.21A	11.27A	11.32A	11.38A
Maximum Power Voltage(Vmp)	42.62V	42.77V	42.92V	43.06V	43.20V
Maximum Power Current(Impp)	10.11A	10.17A	10.23A	10.29A	10.32A

*NMOT: Irradiance 800W/m², ambient temperature 20°C, wind speed 1m/s

· IV Curves



· Warranty



12-year product warranty
25-year warranty on power output
*Specific information is referred to the product quality guarantee

Temperature Coefficient of Pmax	Y(Pm)	- 0.350%/°C
Temperature Coefficient of Voc	β(Voc)	- 0.275%/°C
Temperature Coefficient of Isc	α(Isc)	+0.045%/°C

Solar Cells	Monocrystalline 182 x 91mm
No. of Cells	156 (6×26)
Dimensions	2464mm×1134mm×35mm
Weight	29.5kg
Front Glass	High transmission tempered glass3.2mm
Frame	Anodized aluminum alloy
Junction Box	IP68
Cable	4mm ² (IEC)Length: (+)400mm, (-)200mm/length can be customized
Connectors	MC4/MC4 Compatible
Packaging Configuration	31pcs/box: 496pcs 40'HQ Container

*The module recycling should be carried out by the professional institutions at the end of module life cycle

*Copyright@2022V2 Plus Specifications are subject to change without further notification