

# SOLAR SERVICES

## OUR ENGINEERING OFFICE

### FREE TRAINING

an assistance offered on our product to launch your first project (either on-site or via skype).

### AN IN DEPTH-STUDY OF YOUR PROJECT

our R&D department can offer you a **custom-made product**. Our expert engagement is to make you an offer within 48 hours.

### AN OPTIMIZED STUDY

detailed plans are made to answer all projects requirements, our expertise's will ensure our solution is perfectly adapted to the building site constraints and to all regulatory requirements.

### A PRIVILEGED ASSISTANCE

Our team provide an assistance through all needed procedures in particular if your project requires some validation by the Inspection office.

## THE SOLAR CLUB SERVICE

As a Dome Solar customer, you can access freely, the SOLAR CLUB SERVICE in order to get some added services and many privileges.

### NOTA

📍 | Dome Solar - 3 rue Marie Anderson  
44 400 Rezé

☎ | Tél. +33 (0)2 40 67 92 92

✉ | info@dome-solar.com

[www.dome-solar.com](http://www.dome-solar.com)

## OUR PARTNERS

## ROOF SOLAR TILTED TPO

TPO WATERPROOF  
MEMBRANE

### FLAT ROOFS RANGE

ROOF-SOLAR BITUMEN

ROOF-SOLAR TILTED BITUMEN

ROOF-SOLAR EPDM

ROOF-SOLAR PVC

ROOF-SOLAR TILTED PVC

ROOF-SOLAR TPO

ROOF-SOLAR TILTED TPO

Document printed in France, with vegetable inks, on paper from sustainably managed forests, by Goubault Impprimeur certified ISO 14 001. DANZÉ®



**DOME**  
SOLAR  
PHOTOVOLTAIC MOUNTING SOLUTIONS



## LA SOLUTION

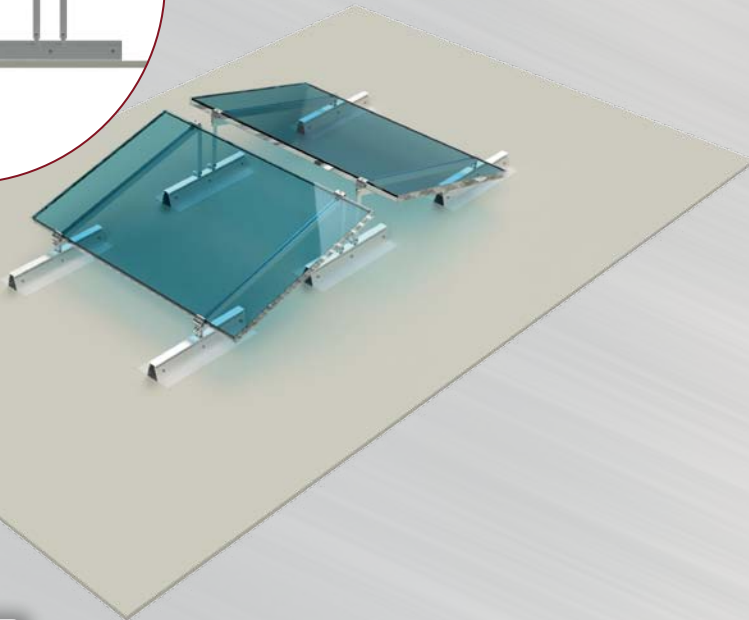
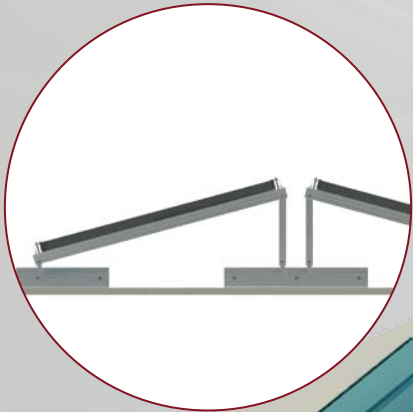
**ROOF-SOLAR TILTED TPO** solution adapts to TPO flat roofs, without requiring perforation of the membrane, and allows to tilt solar panels

## QUALITÉ

Sturdy and hard-wearing solution manufactured with premium components made of aluminum.

## SIMPLICITÉ

The fastening system does not require perforating the insulation, fastens directly onto the sealant membrane by means of heat welding. The tilting structure can be assembled before roof mounting, it is light, very handy and attaches to the rail in just a few seconds.



# ROOF SOLAR TILTED TPO

## TECHNICAL CHARACTERISTICS

### USE CONDITIONS

Closed building, new or renovated roof, total or partial covering

### TYPE OF SUPPORT

Concrete, ribbed steel sheets, wood  
C class compressibility insulation  
TPO waterproof coating (min. 1.5 mm)

### MODULE POSITION

Landscape mode

### MATERIALS

Aluminum, stainless steel and TPO

### SYSTEM WEIGHT

4 kg/m<sup>2</sup> excluding the module

### SYSTEM COMPONENTS

1.2 m or 0.6 m aluminum rail equipped with support bands, "Y" rail, aluminum flat section (for inclination of up to 15°), external clamp with an aluminum/stainless steel finish, Rail Grounding Connector, cable guide

### OPTIONS

Module Grounding Connector

**ETN**

Assessment  
of New  
Techniques

MADE IN FRANCE

[www.dome-solar.com](http://www.dome-solar.com)