

# M425-N-DG-B Series

M10/182mm N-Type Cell Full Black Bifacial DG



N

**N-TOPCon Cell**  
Technology



**Bifacial Cell**  
Module Technologies



**Less Hot Spot**  
Shading Effects



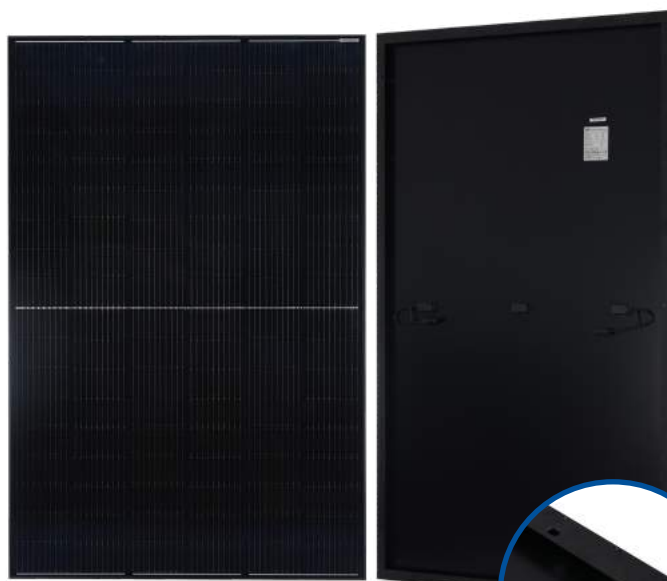
**SMBB Half Cut**  
Cell Technology



**Excellent**  
Anti-PID  
Low LID  
Performance



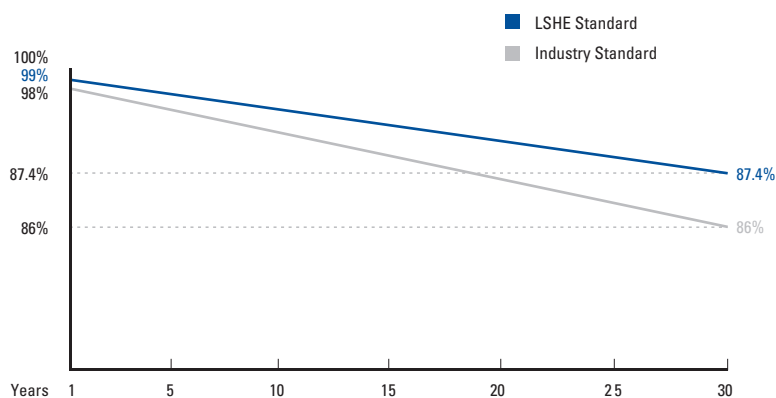
**Higher Power Output**  
Lower BOS & LCOE



Back side



## Linear performance Warranty



\* Standard warranty 15 years, can be extended up to 20 years.

### Electrical Parameters At Stc & Noct

Module Type	STC
Maximum Power (Pmax)	425W
Open Circuit Voltage (Voc)	38.73V
Short Circuit Current (Isc)	14.06A
Voltage at Maximum Power (Vmpp)	31.84V
Current Maximum Power (Impp)	13.35A
Module Efficiency (%)	21.76%

STC: Irradiance 1000W/m<sup>2</sup>, cell temperature 25°C, AM1.5G

### Bifacial Output-Rearside Power Gain

5%	Maximum Power (Pmax)	446W
	Module Efficiency STC (%)	22.85%
15%	Maximum Power (Pmax)	489W
	Module Efficiency STC (%)	25.03%
25%	Maximum Power (Pmax)	531W
	Module Efficiency STC (%)	27.21%

### Mechanical Characteristics

Solar Cells	N-type Mono
No. of Cells	108 (6x18)
Dimensions	1722 x 1134 x 30mm
Weight	23.5kg
Front Glass	2.0mm coated semi-tempered glass
Back Glass	2.0mm semi-tempered glass
Junction Box	Ip68 rated (3 by pass diodes)
	4.0mm <sup>2</sup>
Output Cables	300mm (+) / 300mm (-)
	Length can be customized
Connectors	Mc4 compatible
Mechanical Load Test	5400Pa

### Packing Configuration

Container	20'GP	40'HQ
Pieces Per Pallet	36	36
Pallets Per Container	6	26
Pieces Per Container	216	936

### Operating Characteristics

Operating Module Temperature	-40°C to +85°C
Maximun System Voltage	1500 DC(IEC)
Maximun Series Fuse Rating	30A
Power Tolerance	0/+5W

### Temperature Characteristics

NMOT	45+2°C
Nominal Operating Temperature (NMOT)	-0.29%/°C
Temperature Coefficient of Pmax	-0.25%/°C
Temperature Coefficient of Voc	+0.045%/°C

### Certificate

ISO9001:2015 QMS, ISO14001:2015 EMS, ISO45001:2018 OHSMS  
IEC61215/IEC61730 Standard Quality, IEC61701/IEC62716 Salt/Mist/Ammonia Tests

