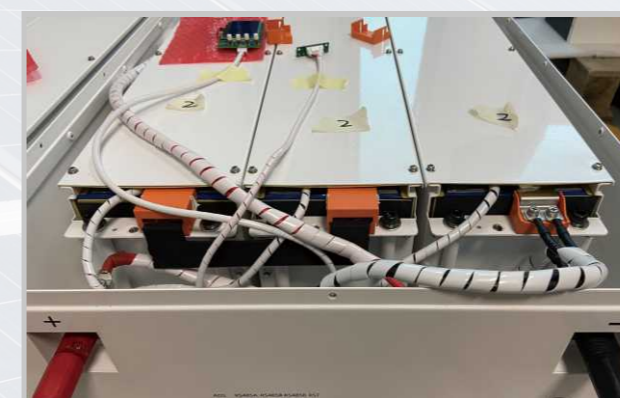




SHENZHEN LITU NEW ENERGY TECHNOLOGY CO.,LTD

PRODUCT SPECIFICATIONS

| Battery Specifications | | | |
|---------------------------------------|--|----------------|-----------------|
| Model No | YP PW-5KW | YP PW-7KW | YP PW-10KW |
| <i>Nominal Parameters</i> | | | |
| Voltage | 48 V / 51.2V | 48 V / 51.2V | 48 V / 51.2V |
| Capacity | 100Ah | 150Ah | 200Ah |
| Energy | 4.8 / 5.12 Kwh | 7.2 / 7.68 Kwh | 9.6 / 10.24 Kwh |
| Dimensions (L x W x H) | 740*530*200mm | 740*530*200mm | 740*530*200mm |
| Weight | 58.5 / 68 kg | 75.0 / 85 kg | 96.5 / 110 kg |
| <i>Basic Parameters</i> | | | |
| Life time(25°C) | 20 years | | |
| Life cycles(80% DOD, 25°C) | 6000 Cycles | | |
| Storage time / temperature | 5 months @ 25°C; 3 months @ 35°C; 1 month @ 45°C | | |
| Operation temperature | -20°C to 60°C @60+/-25% Relative Humidity | | |
| Storage temperature | 0°C to 45°C @60+/-25% Relative Humidity | | |
| Lithium Battery Standard | UL1642(Cell) , IEC62619,UN38.3, MSDS ,CE-EMC | | |
| Enclosure protection rating | IP21 | | |
| <i>Electrical Parameters</i> | | | |
| Operation voltage | 48 Vdc | 48 Vdc | 48 Vdc |
| Max. charging voltage | 54 Vdc | 54 Vdc | 54 Vdc |
| Cut-off Discharge Voltage | 42 Vdc | 42 Vdc | 42 Vdc |
| Max. charging and discharging current | 100A(4800W) | 120A(5760W) | 120A(5760W) |



www.youth-power.net

Email : sales@youth-power.net