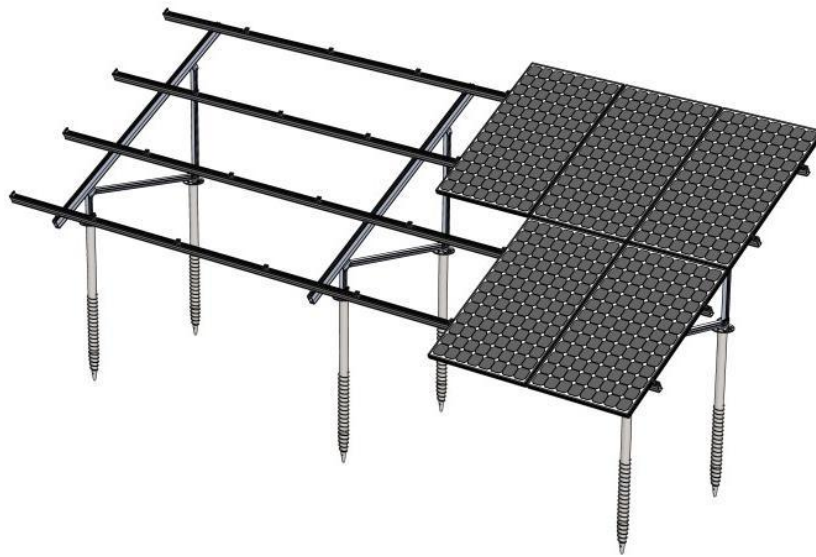


## All-aluminum standard ground solar mounting system



The system features an all-aluminum construction that provides superior strength and durability compared to traditional steel systems. And the entire system durable, light-weight, recyclable and highly strong. We can provide an economic and effective solution tailored to the wind and snow load of the project.

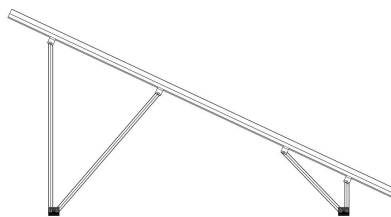
### Technical features:

<b>Product name</b>	Standard ground mounting system
<b>Application</b>	Flat concrete roof, open terrain
<b>Inclination</b>	Customized
<b>Material</b>	AL6005-T5, SUS304, Q235
<b>Finish</b>	AL 6005-T5 Anodized, Q235 Hot-dip galvanizing
<b>Module orientation</b>	Landscape or Portrait

Depending on the different design conditions, pre-assembly support is generally designed into the following two shapes:



The N-Type pre-assembly support is mainly used for the small wind & snow load condition projects. (2-4 columns)



The W-type pre-assembly support is mainly for the 4-5 columns wind & snow load condition projects. We will add cross support to make the structure stronger if the ground height is higher or wind & snow load is larger.

