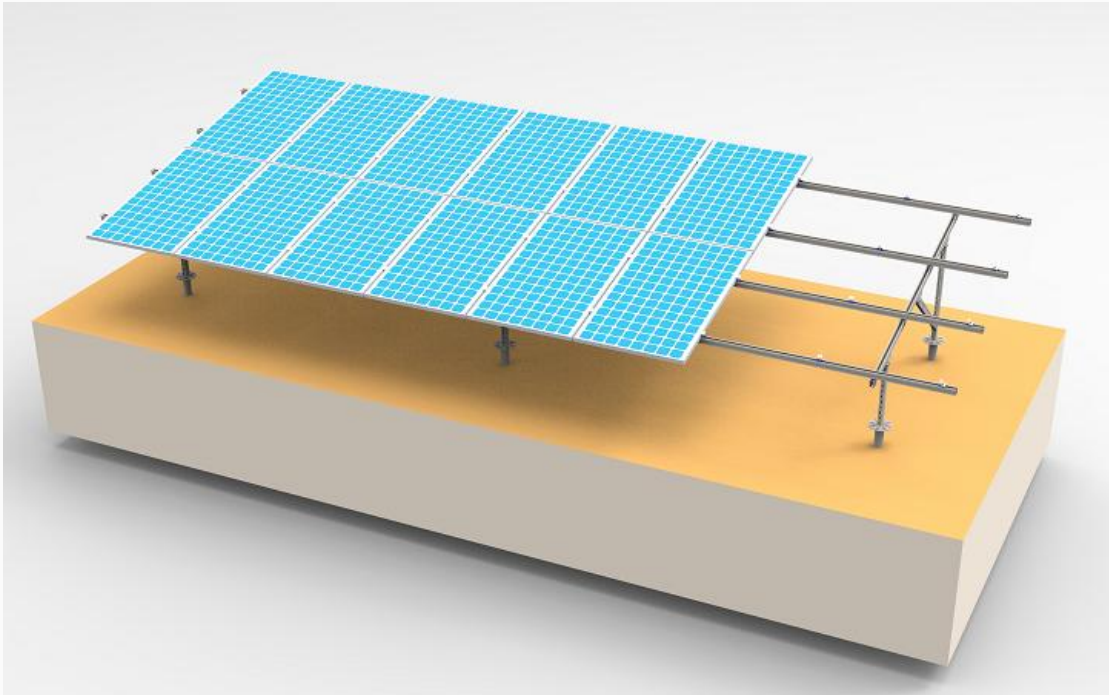


Steel Ground Mounting System With Screw



Feature:

- It is applicable for open field PV mounting system
- There are two types foundation for your choose, one is ground screw, another is concrete block.

Parameters:

- Application: Open Filed
- Module Tilt Angle: 5-40 degree
- Max Wind Speed: 60 m/s
- Snow Load: 1.4 KN/m²
- Material: Q235
- Surface: hot dipped galvanized
- Foundation: ground screw or concrete block

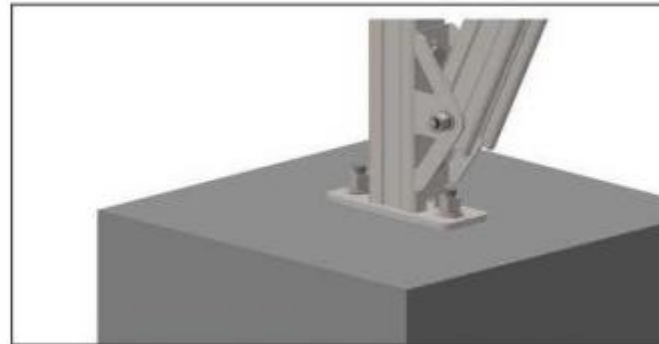
Advantage:

- Vertical and horizontal module installation are possible
- Variable module pitch from 5° to 40°
- Maximum flexibility thanks to height-adjustable module clamps and end clamps
- Other foundation variants on request, e.g. installation on concrete footings or with ground screws
- Long service life, complete recyclability and corrosion resistance

Detail



Front / rear leg and beam



Front / rear leg and concrete block