

60 CELL POLYCRYSTALLINE SOLAR MODULE

GB-260P | 265P | 270P | 275P | 280P | 285P



KEY FEATURES



Designed for very High Area Efficiency, suited for roof-top and ground mounted applications.



Up to +5Wp Positive Power Tolerance guaranteed.



Engineered to provide Excellent Low Light and Longer Wavelength Response.



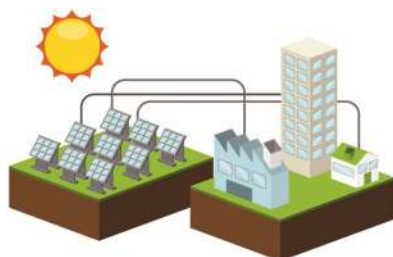
Extremely Reliable Product suited for all environment conditions.



Designed for high voltage systems of upto 1000.

QUALITY AND SAFETY

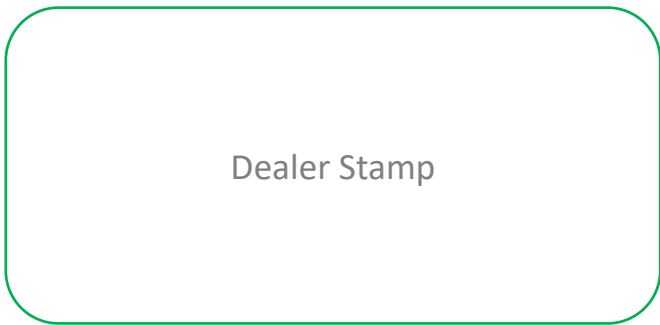
- ◆ 25 years of linear power output warranty**
- ◆ Rigorous quality control meeting the highest international standards
- ◆ 100% EL tested to ensure micro crack free modules
- ◆ Certified for PID resistance
- ◆ Certified for salt mist corrosion resistance



**NEED MORE
INFORMATION?**

APPLICAITONS

- ◆ On-grid large scale utility systems
- ◆ On-grid rooftop residential & commercial systems
- ◆ Off-grid residential systems



Dealer Stamp

GreenBrilliance is committed to providing high quality solar products and solar system solutions to customers worldwide.

Electrical Parameters at STC (AM 1.5, 1000 W/m², 25°C)

| | | | | | | |
|---------------------------------|-------|-------|-------|-------|-------|-------|
| Peak Power - Pmax (Wp) | 260 | 265 | 270 | 275 | 280 | 285 |
| Maximum Voltage - Vmpp (V) | 30.80 | 30.90 | 31.00 | 31.20 | 31.30 | 31.50 |
| Maximum Current - Imp (A) | 8.43 | 8.57 | 8.70 | 8.82 | 8.94 | 9.07 |
| Open Circuit Voltage - Voc (V) | 37.90 | 38.10 | 38.30 | 38.50 | 38.70 | 38.90 |
| Short Circuit Voltage - Isc (A) | 8.93 | 9.03 | 9.12 | 9.22 | 9.32 | 9.41 |
| Module Efficiency - η (%) | 15.98 | 16.29 | 16.6 | 16.9 | 17.21 | 17.52 |

Electrical Parameters at NOCT (800 W/m², 20°C, wind speed 1 m/sec)

| | | | | | | |
|---------------------|-------|--------|--------|--------|--------|-------|
| Power (Wp) | 192.8 | 194.70 | 197.80 | 200.70 | 203.20 | 205.9 |
| V at Pmax (V) | 27.80 | 27.90 | 28.00 | 28.10 | 28.20 | 28.30 |
| I at Pmax (A) | 6.93 | 6.98 | 7.06 | 7.15 | 7.22 | 7.30 |
| V _{oc} (V) | 35.40 | 35.50 | 35.60 | 35.70 | 35.80 | 35.90 |
| I _{sc} (A) | 7.24 | 7.37 | 7.49 | 7.62 | 7.73 | 7.85 |

Temperature Co-efficient (T_c) & Permissible Operating Conditions

| | |
|---|-----------------|
| T _c of Open Circuit Voltage (β) | - 0.341 %/°C |
| T _c of Short Circuit Current (α) | 0.050 %/°C |
| T _c of Power (γ) | - 0.424 %/°C |
| Maximum System Voltage | 1000 V |
| NOCT | 45 +/- 2°C |
| Temperature Range | - 40°C to +85°C |

Mechanical Data

| | |
|----------------------------|--|
| Length x Width x Height | 1640 mm x 990 mm x 35 mm |
| Weight | 17 Kgs |
| Junction Box | IP67, 3 bypass diodes |
| Cable & Connectors | 1000 / 1200 mm length cables, MC4 connectors |
| Application Class | Class A (Safety Class II) |
| Superstrate | High transmission low iron tempered AR glass |
| Cells | 60 poly crystalline solar cell |
| Cell Encapsulant | EVA (Ethylene Vinyl Acetate) |
| Back Sheet | Composite film |
| Frame | Anodized AL Frame with twin wall profile |
| Mechanical Load Test | Snow load upto 5400Pa/ Wind load upto 2400Pa |
| Maximum Series Fuse Rating | 15A |

Packaging Information

| | | | |
|------------------------------|--------|-------|--------------------|
| Container | 20' GP | 40'GP | 40'HC |
| Pallet (26 in 1) / Container | 10 | 24 | 24 + 20 (2in1 Box) |
| Pieces / Container | 312 | 728 | 776 |

Warranty and Certifications

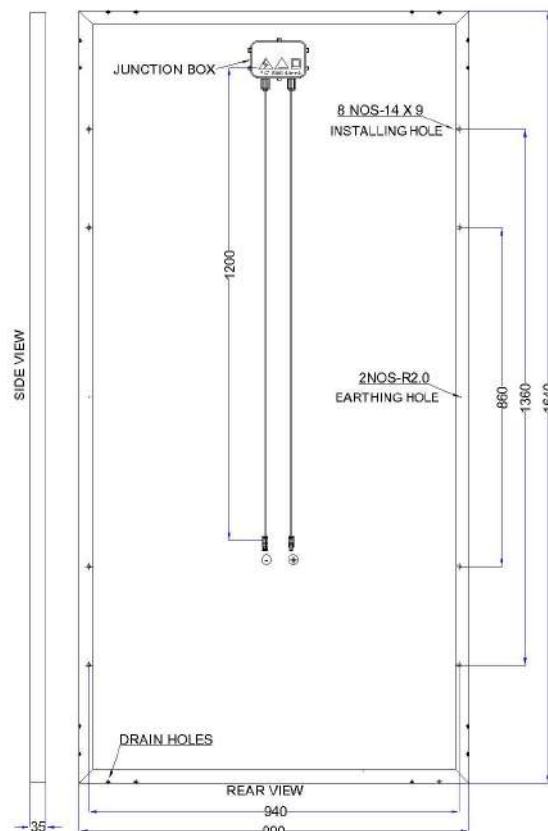
| | |
|------------------------------|---|
| Product Warranty** | 10 years |
| Performance Warranty** | Linear power warranty for 25 years with 2.5% for 1st year degradation and 0.75% from year 2 to year 25. |
| Approvals and Certifications | IEC 61215-2016*, IEC 61730-1&2*, IEC 61701*, IEC 62804*, IEC 62716*, UL-1703*, CE* |

** Refer to GreenBrilliance warranty document for terms and conditions. *All(*) certification under progress.

Caution: Read Safety and Installation Manual before using the product.

Specification included in this datasheet are subject to change without notice. Electrical data without guarantee.

Please confirm your exact requirement with company representative while placing your order.



All Dim in mm

