

3W-200Wp Solar PV Modules

Series- 3Wp—200 Wp

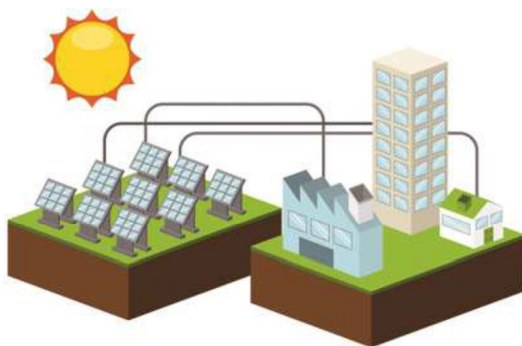


QUALITY AND SAFETY

- ◆ 10 years of linear power output warranty**
- ◆ Rigorous quality control meeting the highest international standards
- ◆ 100% EL tested to ensure micro crack free modules
- ◆ BIS Approved

APPLICAITONS

- ◆ Small Home Lighting Systems
- ◆ Solar Lanterns
- ◆ Traffic Control Lights
- ◆ Solar Street Lights
- ◆ Telecommunication and Radio Stations
- ◆ Surveillance Cameras
- ◆ Offshore devices



Dealer Stamp

**NEED MORE
INFORMATION?**

GreenBrilliance is committed to providing high quality solar products and solar system solutions to customers worldwide.

Electrical Parameters at STC (AM 1.5, 1000 W/m², 25°C) & Mechanical Parameters

Peak Power - Pmax (Wp)	3	5	10	20	30
Maximum Voltage - Vmpp (V)	9.43	9.43	18.86	18.86	18.86
Maximum Current - Impp (A)	0.32	0.53	0.53	1.06	1.59
Open Circuit Voltage - Voc (V)	11.30	11.30	22.61	22.61	22.61
Short Circuit Voltage - Isc (A)	0.34	0.57	0.57	1.14	1.71
Dimensions (L mm)	190	295	300	465	450
Dimensions (W mm)	190	190	350	350	505
Dimensions (T mm)	17	17	17	17	17
Weight (Kg)	0.47	0.73	1.37	2.12	2.95
No of Cells	18	18	36	36	36
Cells Arrangement	6x3	9x2	9x4	9x4	12x3
Junction Box with ByPass Diode	2 terminal	2 terminal	2 terminal	2 terminal	2 terminal
Mounting Hole Pitch (L/2) mm	95	147.5	150	232.5	225
Mounting Hole Pitch (Y) mm	168	168	328	328	493

Electrical Parameters at STC (AM 1.5, 1000 W/m², 25°C) & Mechanical Parameters

Peak Power - Pmax (Wp)	37	40	50	60	75	100	125	130	150	200
Maximum Voltage - Vmpp (V)	18.90	18.90	18.90	18.90	18.90	18.90	18.90	18.90	18.90	25.20
Maximum Current - Impp (A)	1.96	2.12	2.65	3.18	3.97	4.24	6.62	6.87	7.94	7.94
Open Circuit Voltage - Voc (V)	22.64	22.64	22.64	22.64	22.64	22.64	22.64	22.64	22.64	30.18
Short Circuit Voltage - Isc (A)	2.09	2.26	2.83	3.39	4.24	4.52	5.66	5.88	8.48	8.48
Dimensions (LxWxT mm)	430	430	555	635	765	1030	1150	1150	1490	1320
Dimensions (W mm)	665	665	665	665	665	665	675	675	675	990
Dimensions (T mm)	34	34	34	34	34	34	34	34	34	34
Weight (Kg)	3.61	3.61	4.75	5.49	6.61	8.60	10.10	10.10	13.07	16.98
No of Cells	36	36	36	36	36	36	36	36	36	48
Cells Arrangement	9x4	9x4	9x4	9x4	9x4	9x4	9x4	9x4	9x4	8x6
Junction Box with ByPass Diode	2 terminal				3 terminal				4 terminal	
Mounting Hole Pitch (X) mm	260		300		500 60		600	600	660	750
Mounting Hole Pitch (Y) mm	641		636		636		645	645	645	946

Panel Drawing

