

More energy each day



Flexible



High resistance and Walking on panels



Microcracking managing



Light and thin



High resistance to marine environment



Easy to be integrated

GIVING YOU MORE



3% positive tolerance



Series of internal harsh tests



Authorised photovoltaic certificates



Linear performance warranty

FSM series is at the top of the range, thanks to the use of selected high efficiency crystalline silicon cells, reaching a record 21% conversion of sunlight into electricity and with a pleasant appearance, thanks to back-contact technology which hides the electrical contacts. Crystalline cells represent the most advanced available technology on the market, and make the Top Solar panels the highest-efficiency flexible panels.

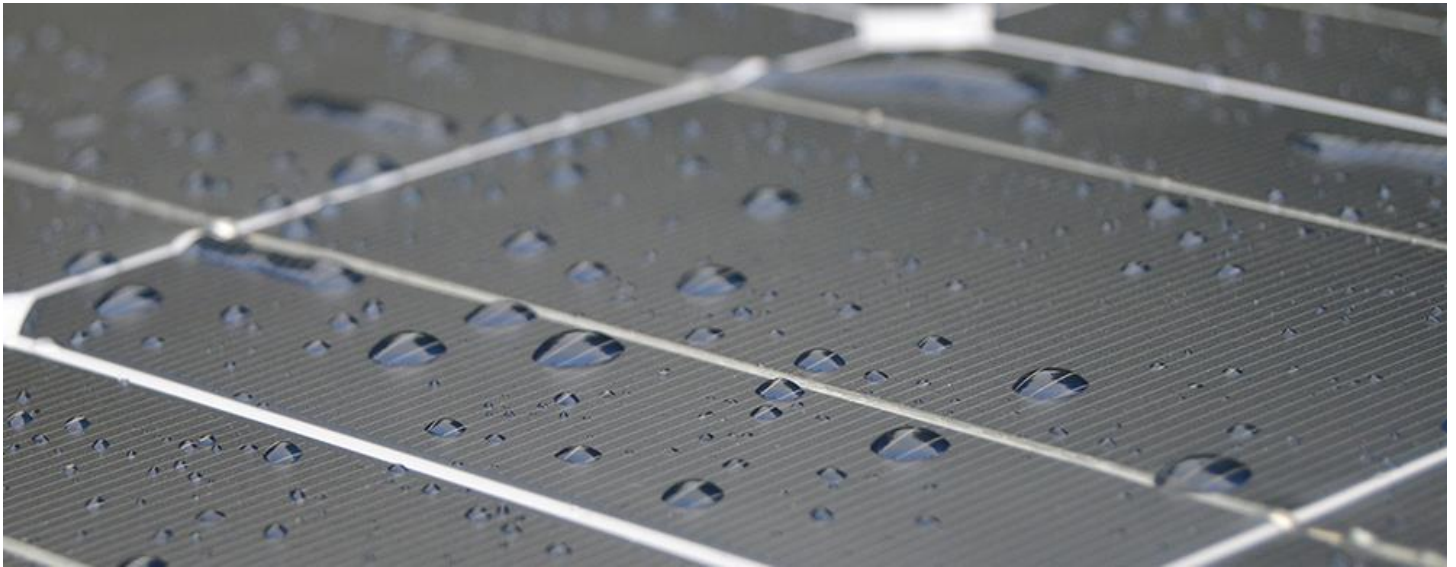
www.topsolar-energy.com

Shenzhen Top Solar Energy Co.,Ltd.

ADD:F2,No.255,Zhangbei Blvd,

Ailian Community,Longgang District,Shenzhen,China

Tel:86 755 85224431 Fax:86 755 28167996 Email:info@topsolar-energy.com



Electrical Characteristics under STC*

Model No.:	TS-FS120M
Maximum Power-Pmax(Wp)	120W
Voltage at Maximum Power-Vmp(V)	19.44V
Current at Maximum Power-Imp(A)	6.18A
Open Circuit Voltage-Voc(V)	23.76V
Short Circuit Current-Isc(A)	6.56A
Solar Cell Efficiency(%)	21.8
Power Tolerance(%)	0/+3

Mechanical Characteristics

Cell Type	Monocrystalline solar cell
Number of Cells	36(4*9)
Dimension(mm)	1000*670*1.8
Weight(kg)	3.1
Frontsheet	PET
Backsheet	TPT,white/black/blue
Frame	Frameless
Junction box	IP67,bypass diodes
Output cables	4mm ² ,90cm,MC4

Temperature Characteristics

Temperature Coefficient of Pmax(%)	-0.42%/°C
Temperature Coefficient of Voc(%)	-0.32%/°C
Temperature Coefficient of Isc(%)	0.04%/°C

Maximum System Ratings

Operating Temperature	-40°C to +85°C
Maximum System Voltage	300V DC
Maximum Series Fuse Rating	10A



*STC(Standard Testing Conditions):Irradiance 1000W/m²,cell temperature 25°C,AM=1.5 *NOCT(Nominal Operating Cell Temperature):Irradiance 800W/m², ambient temperature 20°C,wind speed 1m/s

The specifications in this datasheet are subjected to change without prior notice