

# Server Rack Battery 5KWh - 50KWh



 **HHS ENERGY** SINCE 2004

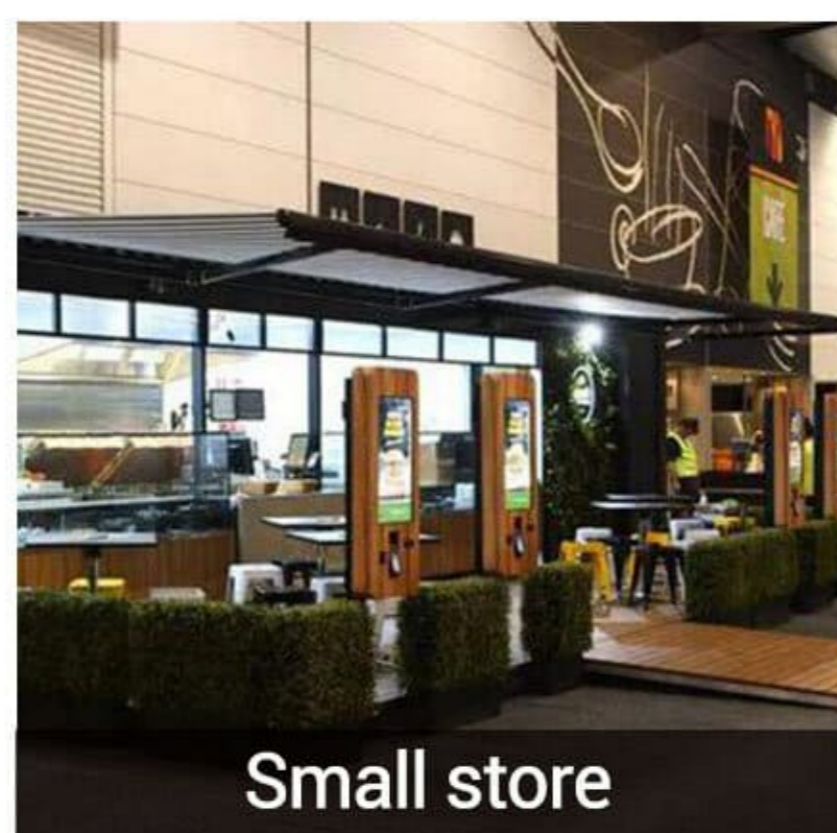
## Product advantages:

- Support a variety of communications, can communicate with a variety of inverters;
- Products cover 5-50KWH capacity segment;
- The product supports parallel connection and expansion;
- Simple appearance design, easy installation;

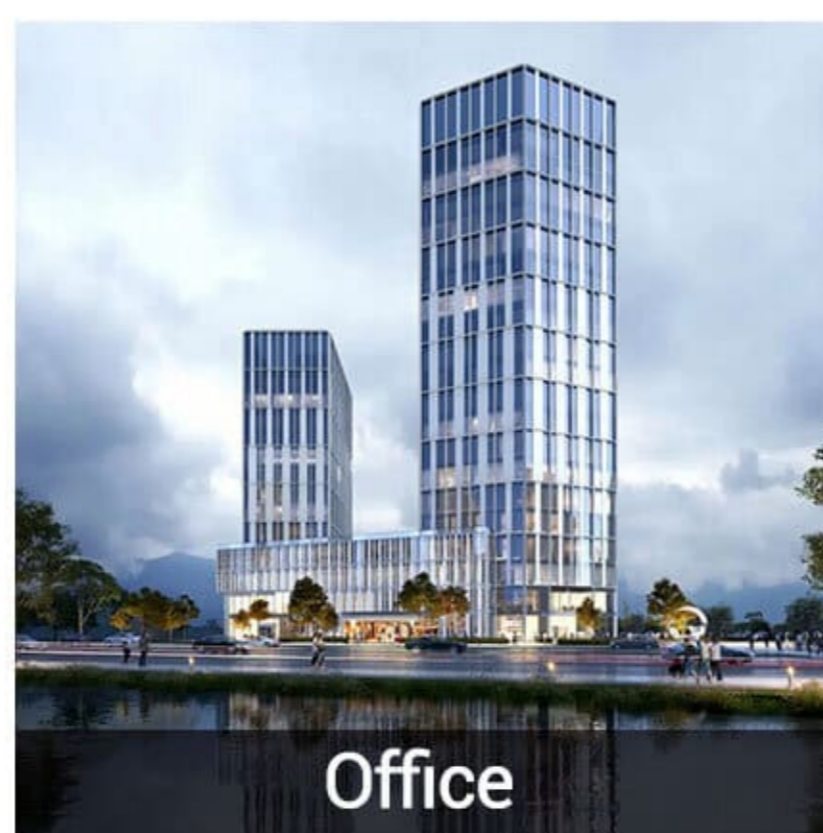
## Application scenarios:



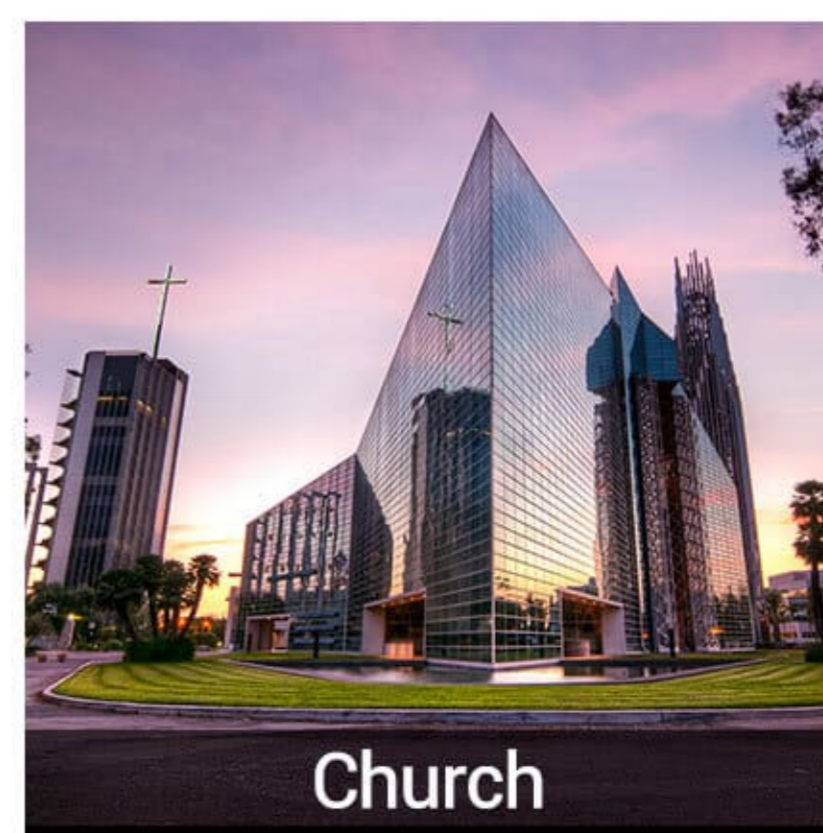
Family



Small store



Office



Church



[www.hhs-energy.com](http://www.hhs-energy.com)



+86-755-28237685



[director@sz-battery.com](mailto:director@sz-battery.com)



# Product Specifications



Model	HHS-SR48100	HHS-SR48500
Nominal Voltage	51.2V(16series)	51.2V(16series)
Capacity	100Ah	500Ah
Energy	5KWh	25KWh
Internal Resistance	≤40mΩ	
Cycle Life	≥6000cycles@80%DOD,25°C, 0.5C	
Design Life	≥10 years	
Charge Cut-off Voltage	58.4V	58.4V
Max. Continuous Work Current	100A	500A
Discharge Cut-off Voltage	40V	40V
Charge Temperature	0°C~60°C	
Discharge Temperature	-20°C~60°C	
Storage Temperature	-40°C~55°C @ 60%±25% relative humidity	
Dimensions	450*442*133 mm	600*600*1600 mm
Weight	44.5Kg	300Kg
Protocol (optional)	RS232-PC,RS485(B)-PC RS485(A)-Inverter,Canbus-Inverter	
Certification	CE,UN38.3,MSDS,UL1973(Cell),IEC62619(Cell)	



# Product Specifications



Model	HHS-SR48200	HHS-SR481000
Nominal Voltage	51.2V(16series)	51.2V(16series)
Capacity	200Ah	1000Ah
Energy	10KWh	50KWh
Internal Resistance	≤40mΩ	
Cycle Life	≥6000cycles@80%DOD,25°C, 0.5C	
Design Life	≥10 years	
Charge Cut-off Voltage	58.4V	58.4V
Max. Continuous Work Current	200A	1000A
Discharge Cut-off Voltage	40V	40V
Charge Temperature	0°C~60°C	
Discharge Temperature	-20°C~60°C	
Storage Temperature	-40°C~55°C @ 60%±25% relative humidity	
Dimensions	515*442*221 mm	600*600*1600 mm
Weight	80Kg	478Kg
Protocol (optional)	RS232-PC,RS485(B)-PC RS485(A)-Inverter,Canbus-Inverter	
Certification	CE,UN38.3,MSDS,UL1973(Cell),IEC62619(Cell)	