



More energy each day



Flexible



High resistance and Walking on panels



Microcracking managing



Light and thin



High resistance to marine environment



Easy to be integrated

GIVING YOU MORE



3% positive tolerance



Series of internal harsh tests



Authorised photovoltaic certificates



Linear performance warranty

FSM series is at the top of the range, thanks to the use of selected high efficiency crystalline silicon cells, reaching a record 21% conversion of sunlight into electricity and with a pleasant appearance, thanks to back-contact technology which hides the electrical contacts. Crystalline cells represent the most advanced available technology on the market, and make the Top Solar panels the highest-efficiency flexible panels.

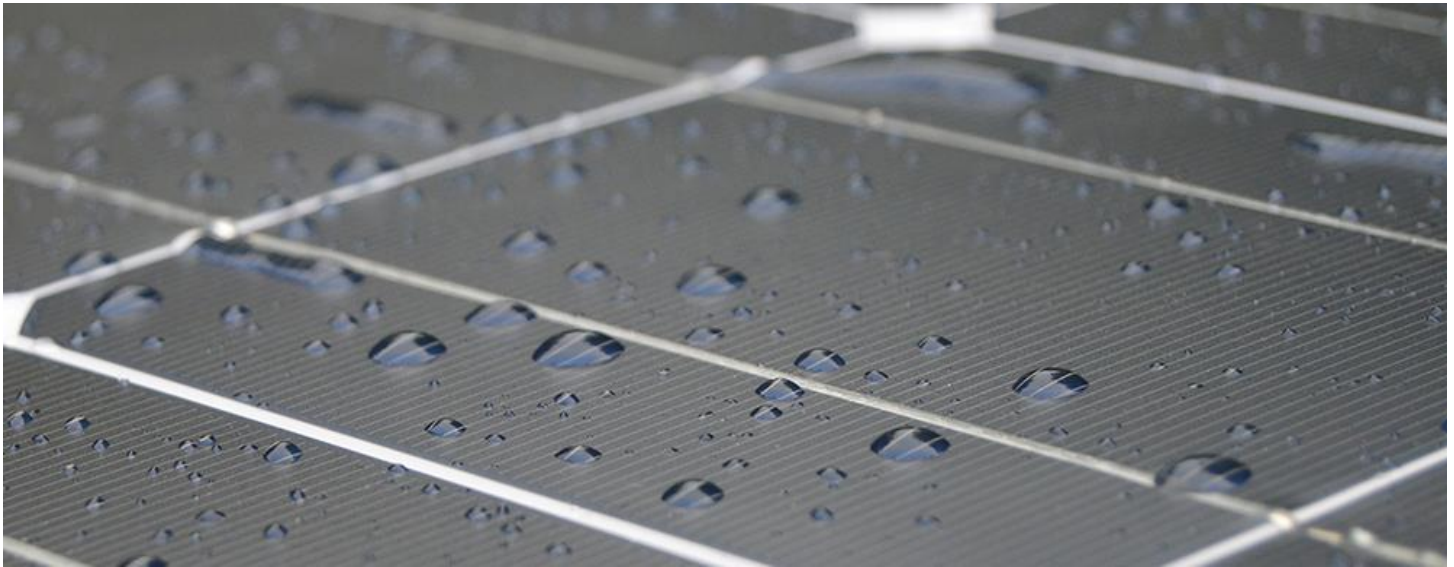
www.topsolar-energy.com

Shenzhen Top Solar Energy Co.,Ltd.

ADD:F2,No.255,Zhangbei Blvd,

Ailian Community,Longgang District,Shenzhen,China

Tel:86 755 85224431 Fax:86 755 28167996 Email:info@topsolar-energy.com



Electrical Characteristics under STC*

| | |
|---------------------------------|-----------|
| Model No.: | TS-FS300M |
| Maximum Power-Pmax(Wp) | 300W |
| Voltage at Maximum Power-Vmp(V) | 32.52V |
| Current at Maximum Power-Imp(A) | 9.23A |
| Open Circuit Voltage-Voc(V) | 39.72V |
| Short Circuit Current-Isc(A) | 9.79A |
| Solar Cell Efficiency(%) | 21.7 |
| Power Tolerance(%) | 0/+3 |

Mechanical Characteristics

| | |
|-----------------|----------------------------|
| Cell Type | Monocrystalline solar cell |
| Number of Cells | 60(6*10) |
| Dimension(mm) | 1630*990*1.8 |
| Weight(kg) | 6.2 |
| Frontsheet | PET |
| Backsheet | TPT,white/black/blue |
| Frame | Frameless |
| Junction box | IP68,bypass diodes |
| Output cables | 4mm ² ,90cm,MC4 |

Temperature Characteristics

| | |
|------------------------------------|-----------|
| Temperature Coefficient of Pmax(%) | -0.42%/°C |
| Temperature Coefficient of Voc(%) | -0.32%/°C |
| Temperature Coefficient of Isc(%) | 0.04%/°C |

Maximum System Ratings

| | |
|----------------------------|----------------|
| Operating Temperature | -40°C to +85°C |
| Maximum System Voltage | 300V DC |
| Maximum Series Fuse Rating | 20A |



*STC(Standard Testing Conditions):Irradiance 1000W/m²,cell temperature 25°C,AM=1.5 *NOCT(Nominal Operating Cell Temperature):Irradiance 800W/m², ambient temperature 20°C,wind speed 1m/s

The specifications in this datasheet are subjected to change without prior notice