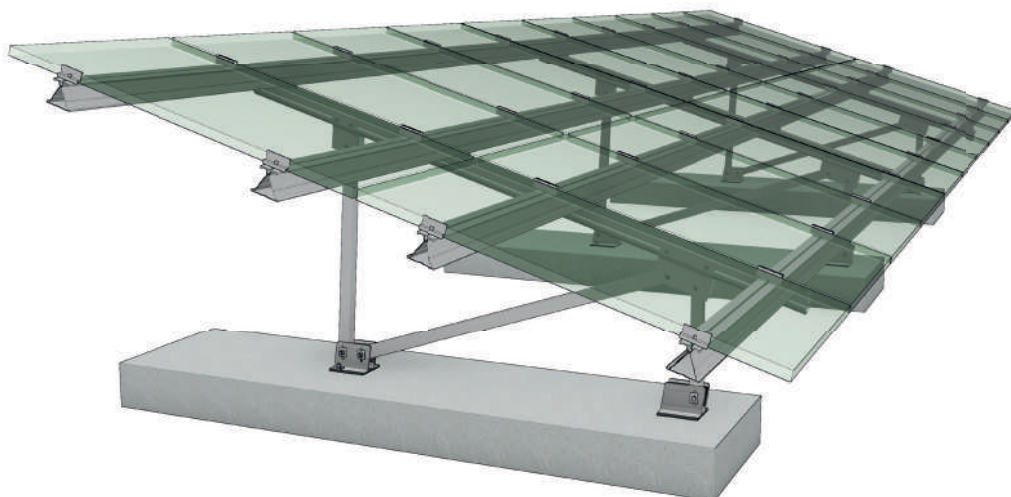


SCHLETTER
The Solar Mounting Group

PVMAX3

PRODUCT SHEET



With PvMax3, you get an universal unit assembly system. PvMax3 can be perfectly combined with our FS Gen6 system for ground-mounted solar plants. In many cases, a foundation with driven piles is not possible due to the soil conditions (soil is too soft or too stony, landfill site, etc.). PvMax3 has been designed especially for such cases. As the substructure is fastened to pre-cast concrete foundations, the assembly time is shortened which reduces the costs. This system is also ideal for small solar plants when costs for test pile-drivings or soil expertises are to be avoided.

THE ECONOMICALLY PRICED UNIT ASSEMBLY SYSTEM FOR GROUND-MOUNTED SOLAR PLANTS

- No perforation of the subsoil
- Stability and high durability
- Perfectly synchronized system components
- High level of corrosion resistance (100% aluminium)
- Quick and cost-effective project planning, also with special projects
- Complete structural analysis incl. foundation calculation with concrete
- anchor recommendation
- Quick assembly (partially pre-assembled support kits)



LESS IS MORE

The reduction of bolted connections to the required minimum speeds up and simplifies the assembly on the construction site. The supports are fastened to the concrete foundation with special profile bases. We will give you accordant structural specifications for the selection of the appropriate dowels.

PLEASE CONSIDER THE FOLLOWING INFORMATION!

On landfill sites, there is a maximum admissible soil pressing that must not be exceeded. Please consider that in your inquiry! Just like the FS Gen6 system, PvMax3 allows the use of several types of modules and fastenings. The arrangement of the modules is project-specific. According to the individual requirements, the modules can be fastened vertically, horizontally or with the combined clamping technique we have developed.



TECHNICAL DATA

Material	Module bearing profiles: Aluminium, special profiles of the S series Girders: Aluminium, special profiles of the BF series Supports: Aluminium, RHP profiles Bolts, nuts: A2-70, A4-80
Construction	Partially pre-assembled support structures for a quick and simple assembly. Wide spans reduce the number of required supports and foundations
Module clamping ¹	Framed and unframed modules Combined module clamping possible With Rapid16 and Rapid16L
Accessories ¹	cable ducts
Logistical details	Pre-assembled as far as possible Can easily be transported on the installation site
Design calculations	According to the current national standards (in Germany, EN 1991/ EC1). System structural analysis with data on foundation dimensioning and screw anchor recommendation based on the wind and snow loads that have to be considered
Foundation	Concrete (The structural analysis of the system features specifications on reinforcement and dimensioning)

¹ module clamps and accessories are listed in our component overview. You will also find them in the download area of our website at:
<http://www.schletter.eu>



SCHLETTER SOLAR GMBH

Alustrasse 1
83527 Kirchdorf
GERMANY

www.schletter-group.com