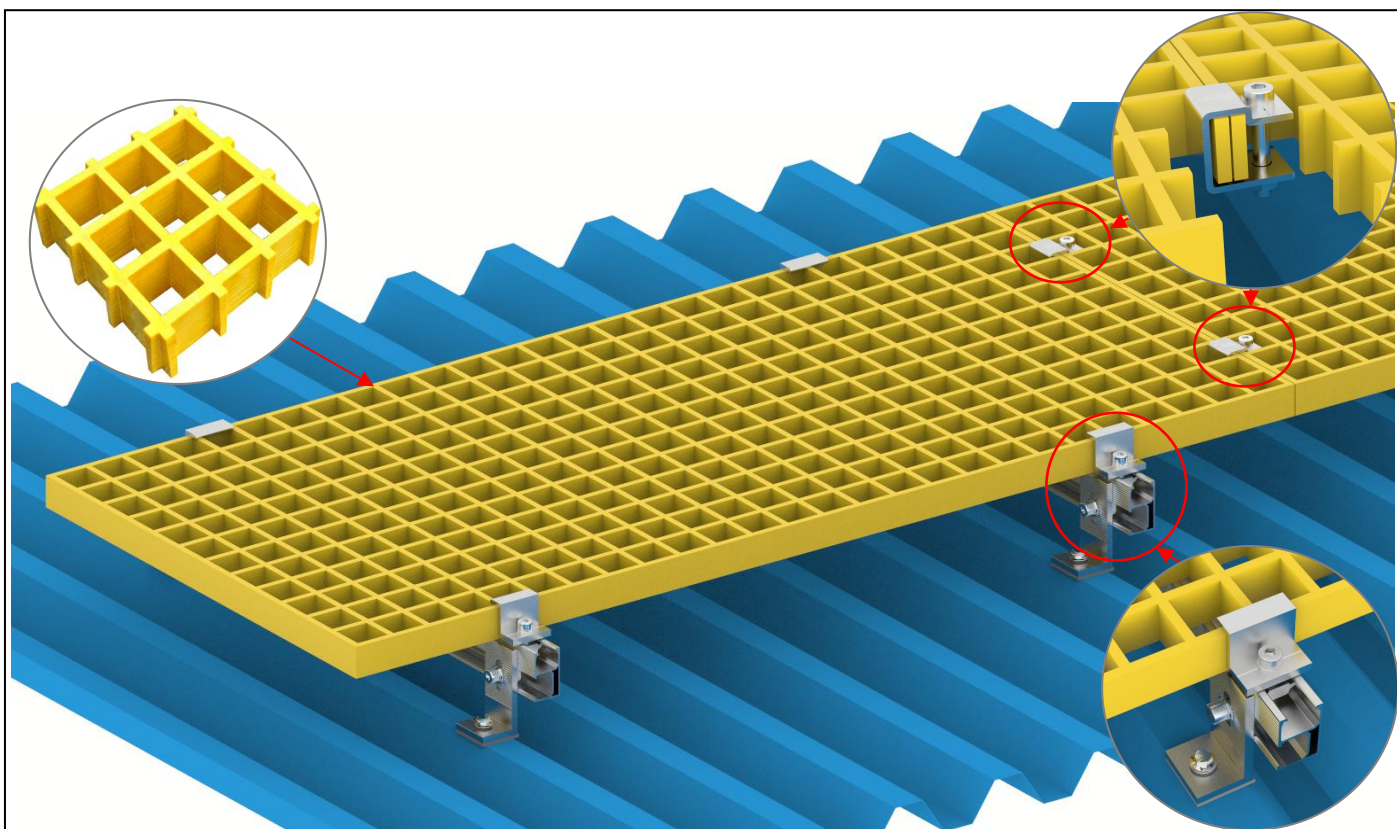
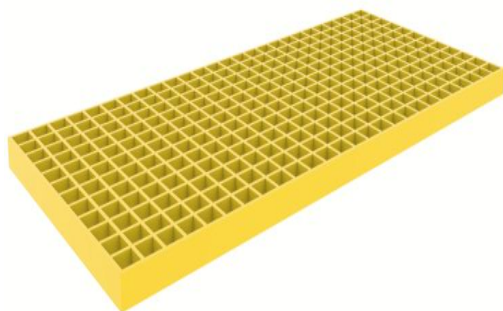


Walkway is fairly useful for a photovoltaic system, which not only makes mounting and maintenance easier, but also protect roofs during walking. Our walkway can be compatible with all our products: Rail,L-feet, clamp etc. To be more versatile, we offer multiple choice of length, width and coating thickness.

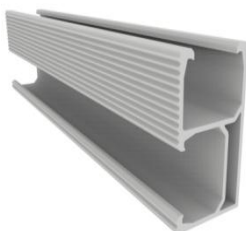
## Overview



## Component



RRP Walkway



Rail



End Clamp



Walkway Splice

## Specification

<b>Material</b>	Fiberglass Reinforced Plastic (FRP)
<b>Dimensions</b>	L3360mm*W370mm*H25mm / L3660mm*W370mm*H30mm; L3360mm*W410mm*H25mm / L3660mm*W410mm*H30mm;
<b>Mesh Size</b>	38mm*38mm
<b>Color</b>	Yellow & Green
<b>Fixing Method</b>	Fixing on the Rail with End Clamp and Hexagonal Bolts
<b>Requirements</b>	The static load per square meter should be less than 500KG
<b>Features</b>	Aging-Resistant, Insulation, Corrosion Resistance & Easy installation

## Project Reference

