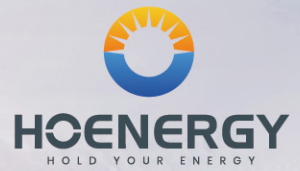


# Battery System

iBAT-WBS-372H



## Six Features for Safety Protection

### ● High Quality Battery Cell

Long cycle life: More than 6000 cycles @ 80% DOD;  
Passed International Certifications:  
IEC 62619; UL 1973, UL 9540A, UN 38.3, GB/T 36276,  
Meet the most stringent cell intrinsic safety requirements.

### ● Modular Design

Avoid short circuit, flexible buffering between cells, overall elastic restraint to reduce the influence of cell expansion;  
Air duct between cells effectively control heat accumulation & avoid thermal runaway.

### ● Thermal Management System

Perfect thermal management technology through simulation and actual testing, to control the temperature rise in the battery system to  $<5^{\circ}\text{C}$

### ● Integrated production

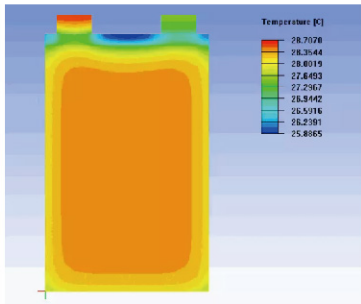
More than 20 complete control processes  
More than 100 MES data points  
More than 500 quality control points  
All data upload to the cloud for long-term traceability.

### ● Rigorous Tests

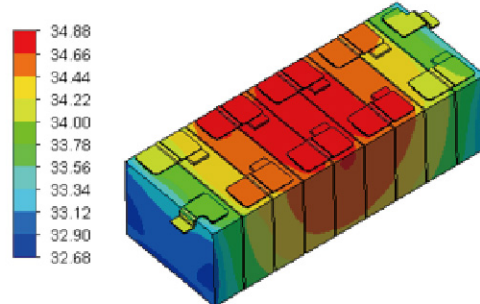
Passed 28 safety & reliability tests, 500 performance testing.

### ● Operation Guarantee

Two-stage battery safety management system  
Full coverage of key sampling points to build a complete IoT  
Real-time monitoring feedback, fault diagnosis and warnings  
Triple protection, blocking risk spread

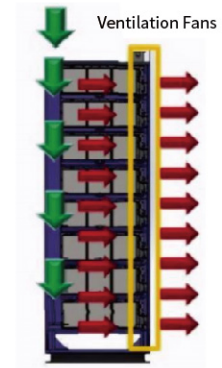


**Battery cell temperature distribution**



**Battery module temperature distribution**

Air flow from air conditioner



**Battery system temperature control**

<b>Model</b>	Battery system	iBAT-WBS-372H
	Battery pack	iBAT-WM-14.33H
<b>Technical Data</b>	Battery type	Lithium iron phosphate
	Battery cell	3.2V, 280Ah
	Combination	1P416S
	Nominal capacity	372kWh
	Nominal voltage	1331V
	Voltage range	1040~1497V
	Nominal charge/discharge current	140A
	Cooling	Forced air cooling
	Permutation type	3 columns, 9 rows
	Key components	26 packs, 1 HV switch box
	Charging temperature range	0~55°C
	Discharging temperature range	-20~55°C
	Humidity	5%-90% (Non-condensing)
	Altitude	≤ 2000m
	Protection level	IP20
Dimensions (LxWxH)	1500*810*2305 mm	
Weight	2550kg	

## Contact us:

Shanghai Hoenergy Power Technology Co.,Ltd.

Email: [info@hoenergy.com.cn](mailto:info@hoenergy.com.cn)

Tel: +86 152 2195 1952

Website: [www.hoenergypower.com](http://www.hoenergypower.com)

