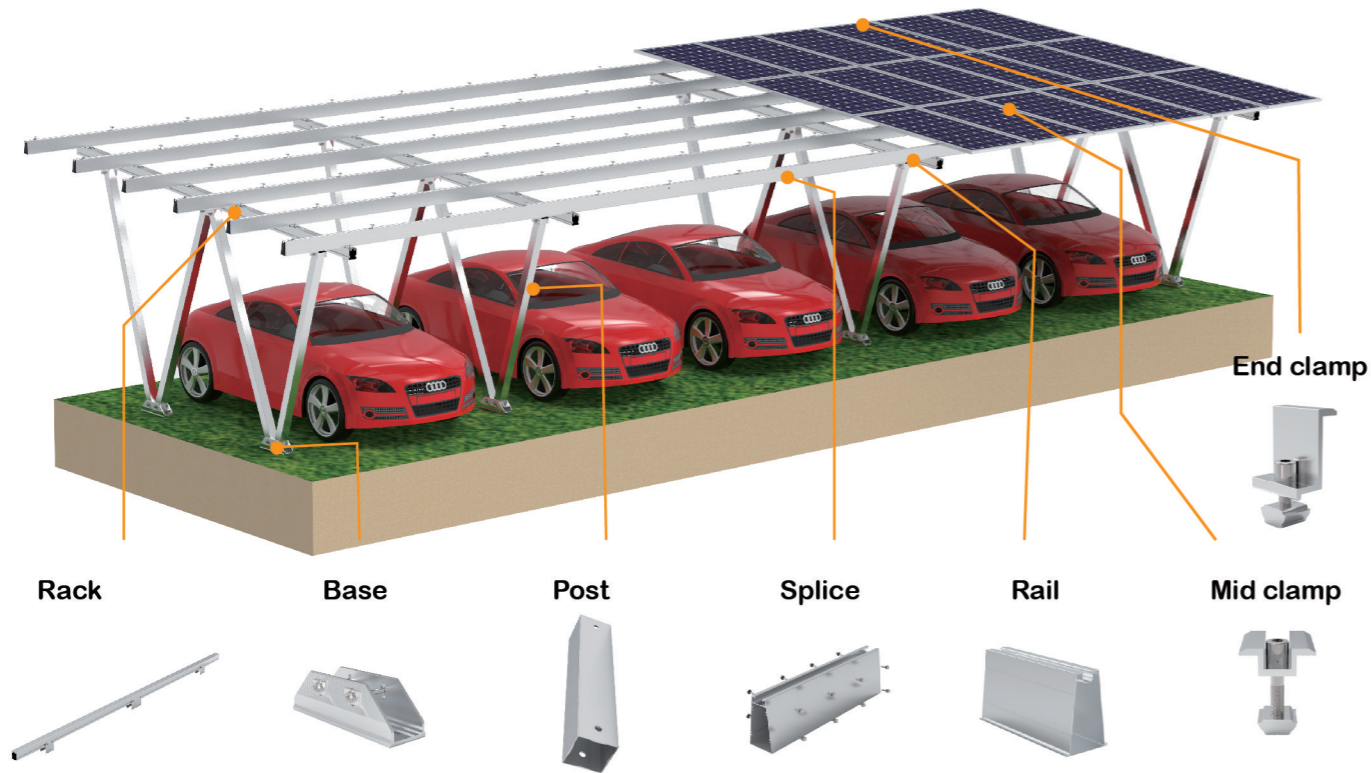


HQ-ASC01



PROJECT CASE

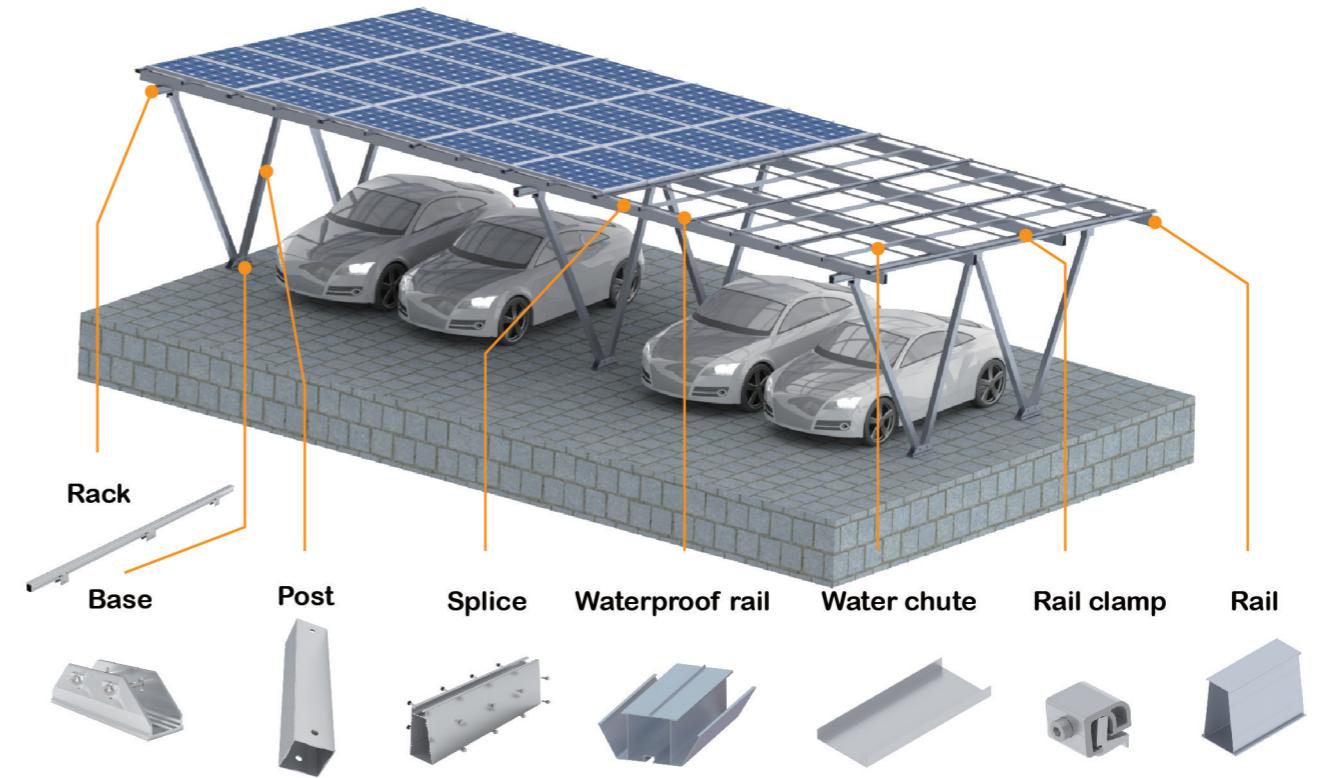


ADVANTAGE

HQ-ASC01 is a carport with aluminum structure.

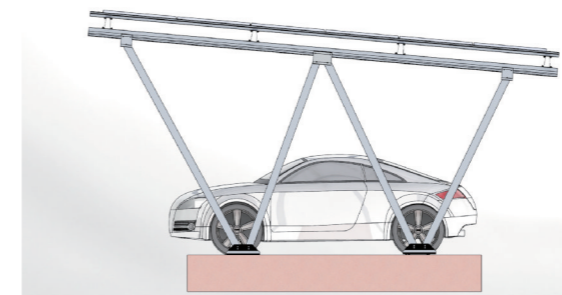
Customization for every project	Steel and waterproof structure available	Commercial and residential available	Pre-assembled rack save installation time

HQ-ASC02



INTRODUCTION

HQ-ASC02 is a waterproof carport Available for aluminum and carbon steel carport



Tilt angle	0-30°
Wind speed	0-80m/s
Snow load	0-150cm
Design standard	AS/NZS1170, JIS C 8955: 2011/2017, DIN1055
Material	Q235B,AL6005-T5&SS304
Installation site	Ground open field

ADVANTAGE

Light and handy	Aesthetically pleasing	Waterproof	Pre-assembled