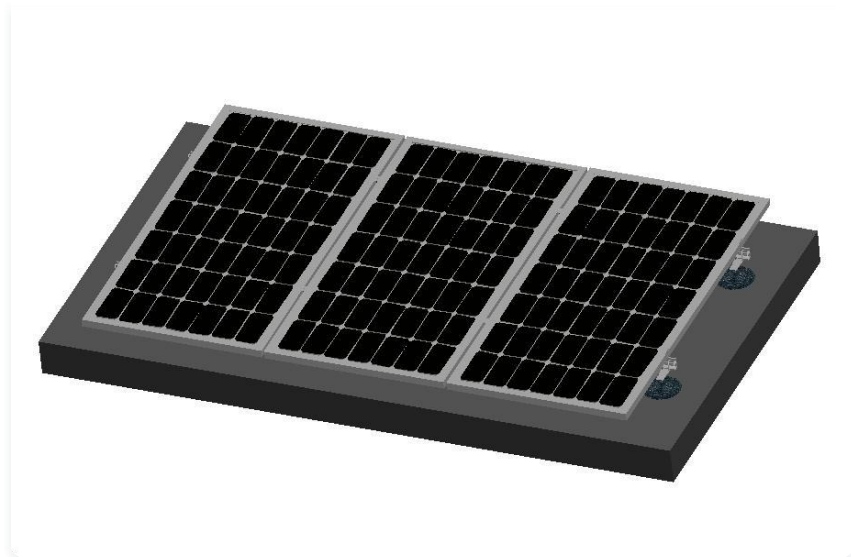


Roof Waterproof Mount System

waterproof bracket system design has great flexibility. It is suitable for flat roofs and sloping roofs. It is used for waterproofing with asphalt. It is suitable for framed and frameless components to be installed on sloping roofs.



16. Roof Waterproof Mount

Parameter

- Wind Load: 45M/S
- Snow Load: : 0.8KN/M²
- Span Range: 0.1-1.8M
- Design Standard:AS/NZS1170, ASCE7-05, DIN1044,
- BSEN1990:2002,BSEN1991-1-3:2000,
- Installation Site:Flat or Pitched Roof
- Main Material:AL6005-T5/SUS304
- Fastener Material: :SUS304
- PV Module:Framed/Unframed
- Module Layout:According to requirements
- Warranty:10 Years



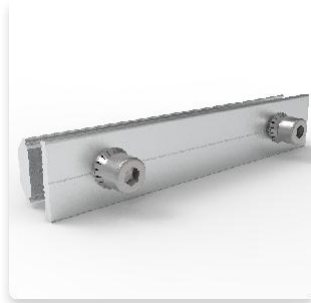
End Clamp



Mid Clamp



Rail



Rail Splicer



Bolt Kit



Track Pallet