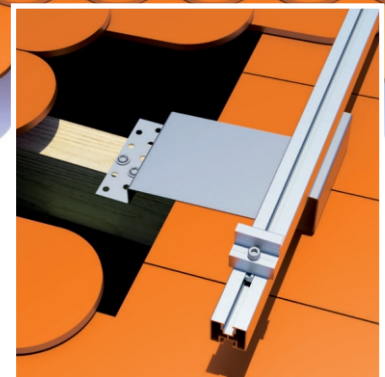
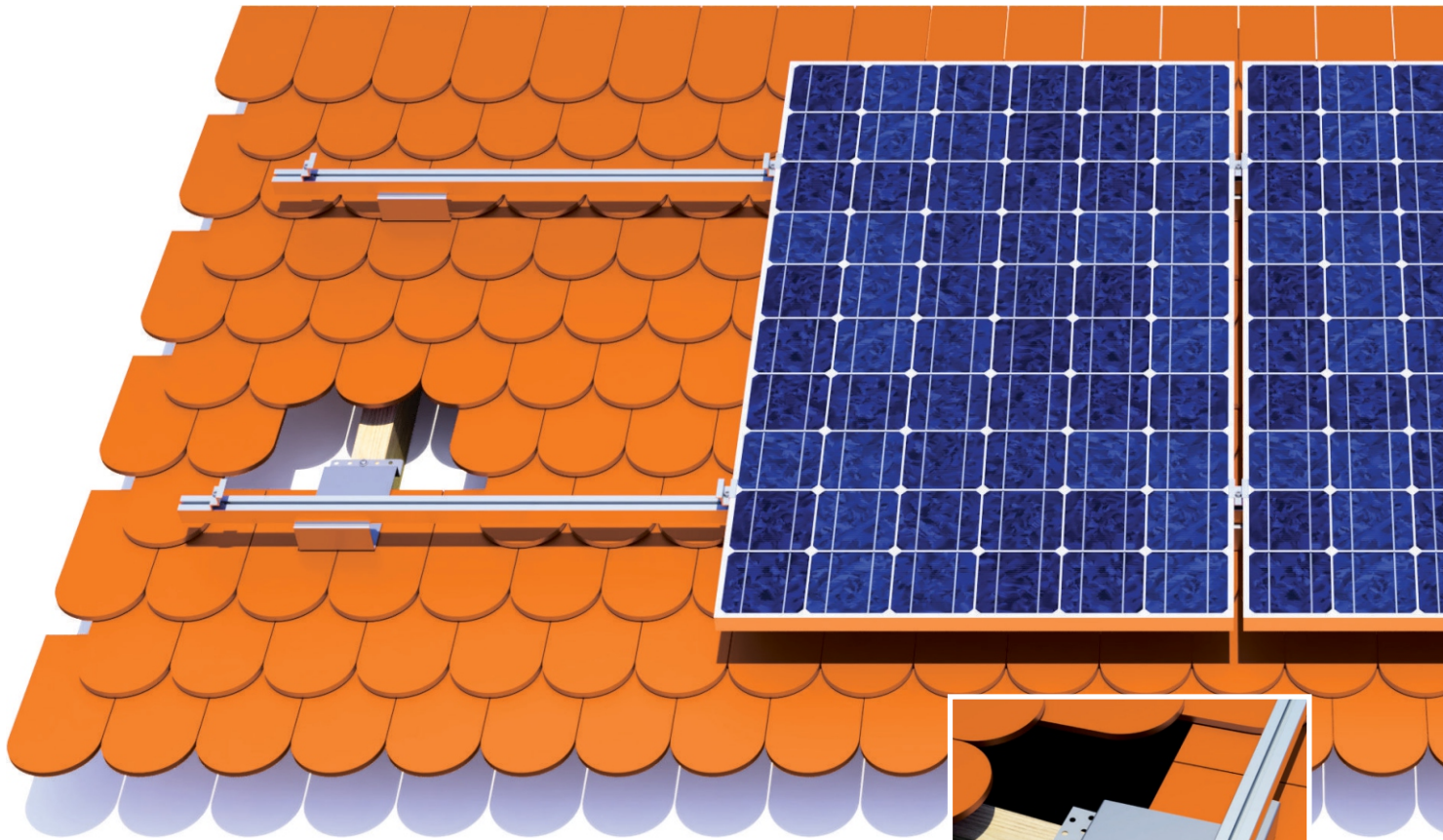




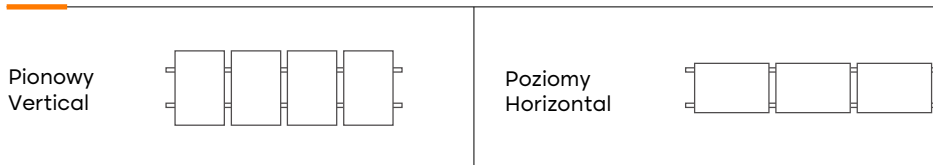
SOLITAN

DACH SKOŚNY, DACHÓWKA KARPIÓWKA/ SLOPED ROOF, PLAIN TILE

SYSTEM KDS-K



Układ paneli / Modules layout:



Materiał / Material

Aluminium / Aluminum
Stal nierdzewna / Stainless steel



Montaż / Installation:

Inwazyjny / Invasive



Waga systemu dla 4 modułów

System weight for 4 modules:

14,85 kg - Pion / Vertical
22,51 kg - Poziom / Horizontal



Spełniane normy / Standards:

PB-TUV-78:2012
PN-EN 1991-1-3:2005
PN-EN- 1991-1-4:2008



Rozstaw między uchwytami

Spacing between handles :

60 - 100 cm



Gwarancja / Guarantee :

10 lat / 10 years



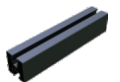
Regulacja uchwytów

Adjustability of handles:

Nie / No

Dodatki / Accessories

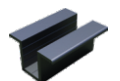
Szyny czarne
Black rails



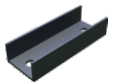
Klemy końcowe czarne
Black end clamps



Klemy środkowe czarne
Black middle clamps



Łączniki czarne
Black connectors



Zaślepki szyny czarne
Black end caps

