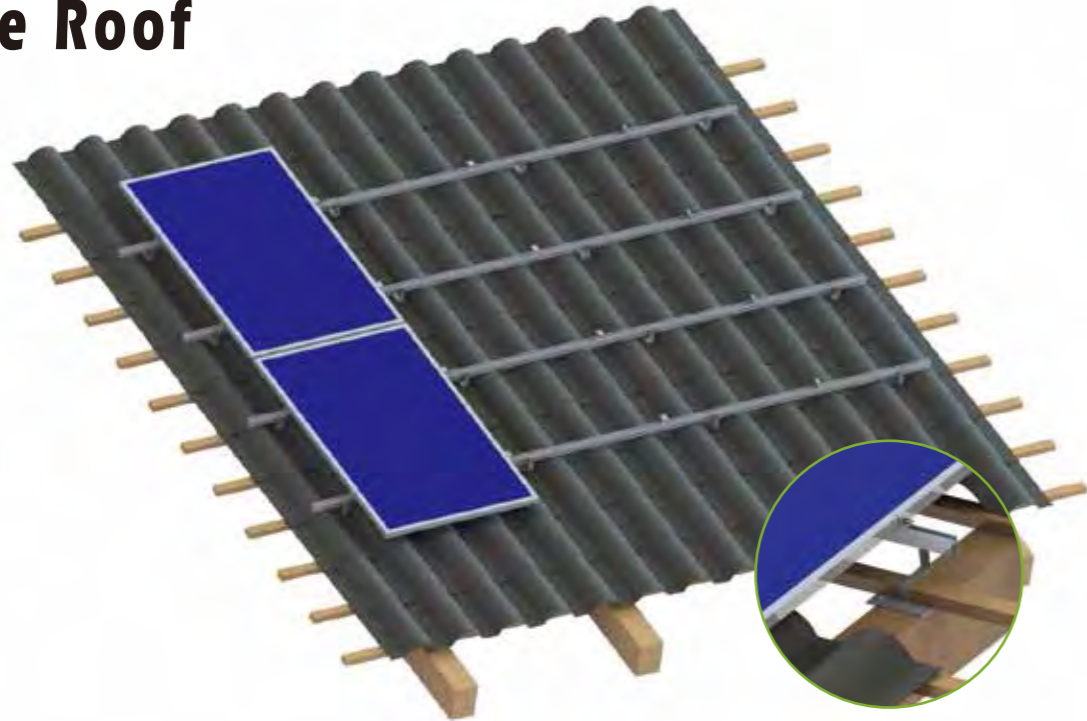


# Tile Roof



CR 1# Rail  
KS-CR1-Length



**Application:**  
Pitched roof with tiles

**Fastening:**  
Roof hooks onto rafters

**Roof Pitch:**  
Up to 60°

**Module Type:**  
Framed and frameless modules

**Module orientation:**  
Landscape/portrait

**Layers of Rails:**  
Single/double layer, cross rail installation

**Advantages:**  
Low fitting costs  
Every size of module array possible  
For all common rafter distances



CR 1# Rail Splice Kit  
KS-CR1-SP

Tile Roof Hook 1#  
KS-HK-R01

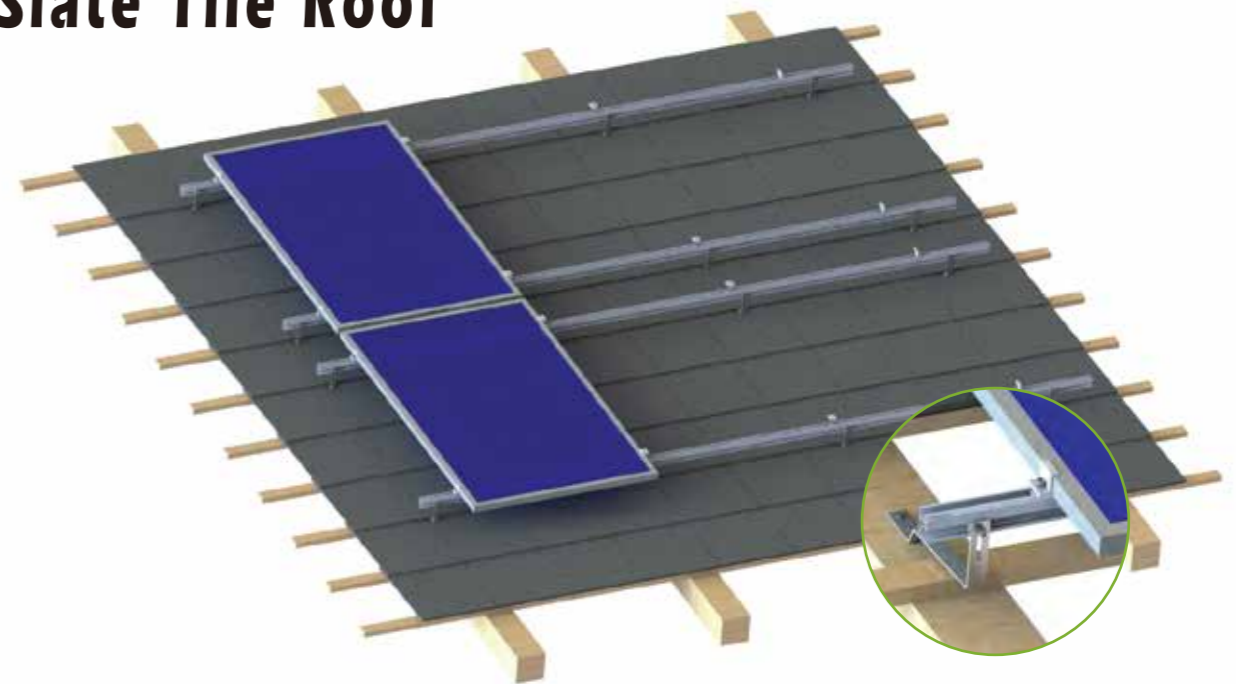


Middle Clamp  
KS-IC2-F40

End Clamp  
KS-EC2-F40



# Slate Tile Roof



CR3# Rail  
KS-CR3-Length



**Application:**  
Pitched roof with tiles

**Fastening:**  
Roof hooks onto rafters

**Roof Pitch:**  
Up to 60°

**Module Type:**  
Framed and frameless modules

**Module orientation:**  
Landscape/portrait

**Layers of Rails:**  
Single/double layer, cross rail installation

**Advantages:**  
Low fitting costs  
Every size of module array possible  
For all common rafter distances



CR 1# Rail Splice Kit  
KS-CR1-SP

Slate Tile Roof Hook 1#  
KS-HK-F01



Middle Clamp  
KS-IC2-F40

End Clamp  
KS-EC2-F40

