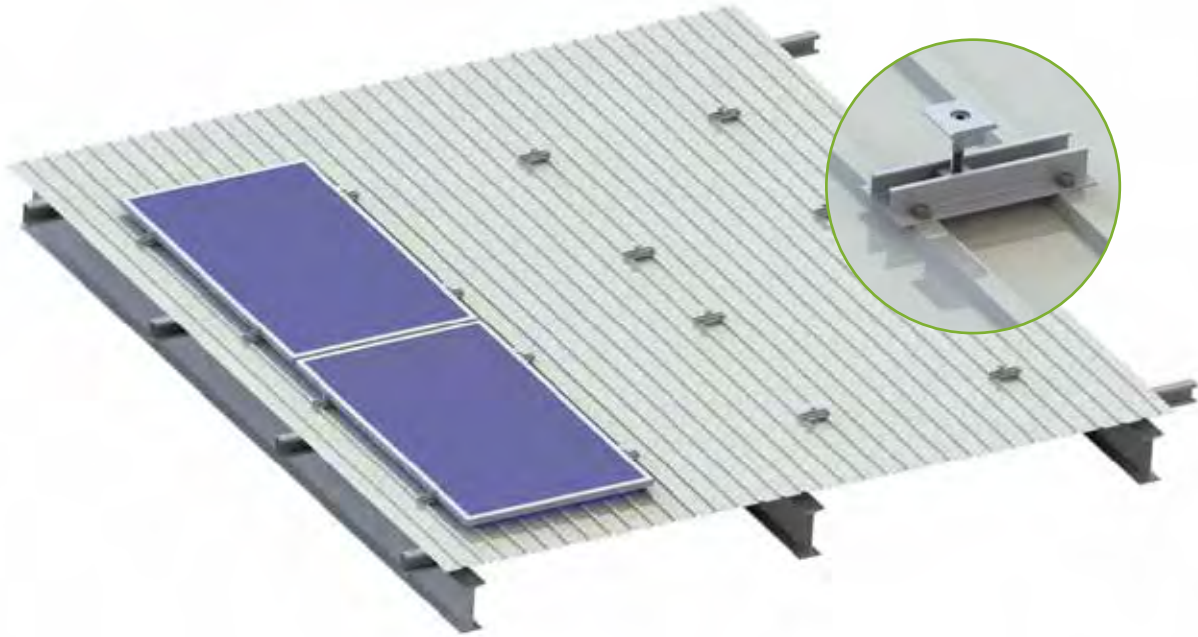


# Tin Metal Roof—UR Solution



**UR Rail**  
KS-UR2-Length



**End Clamp**  
KS-EC2-F40



**CR 1#Rail Splice Kit**  
KS-CR1-SP



**Middle Clamp**  
KS-IC2-F40

**Application:**

Trapezoidal and corrugated sheet metal

**Fastening:**

Riveted or screwed onto raised corrugations

**Module Type:**

Framed and frameless modules

**Module orientation:**

Landscape/portrait

**Layers of Rails:**

Single layer

**Advantages:**

Low material / Low fitting costs

Every size of module array possible

No Rails necessary

Quick mounting