

## Product Introduction

Railless mounting solutions are widely used in large scale warehouse and workshop tin roof. The seam clamps are mounted directly onto the tin roof without any perforation or drilling which cause no damages to the roof. Without the rails, this solution is easy installed.

### Parameter

Wind Load: : 42M/S

Snow Load: : 2KN/M<sup>2</sup>

Span Range: As Roof

Design Standard:AS/NZS1170, ASCE7-05, DIN1044,

GB50797-2012, GB5009-2012,BSEB1990:2002

BSEN199-1-3:2000,BSEN199-1-4:2005

Installation Site:Metal Roof

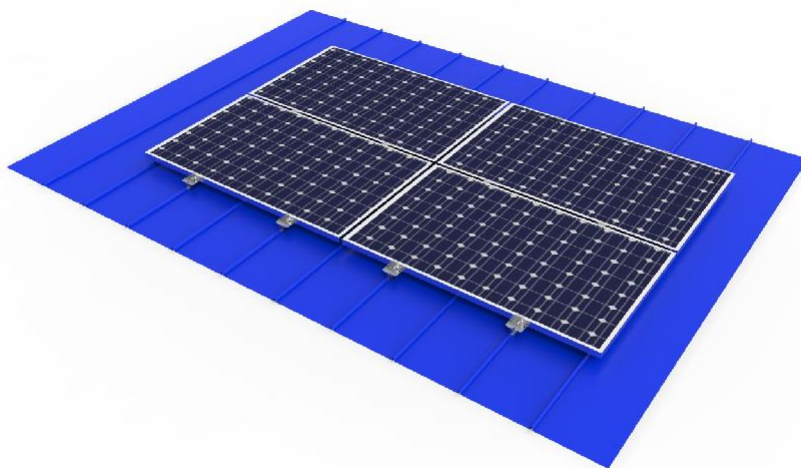
Main Material:AL6005-T5/SUS304

Fastener Material: :SUS304

PV Module:Framed/Unframed

Module Layout:According to requirements

Warranty:10 Years



## 4.Tin Roof Railless Mount System



End Clamp



Mid Clamp



Seam Clamp