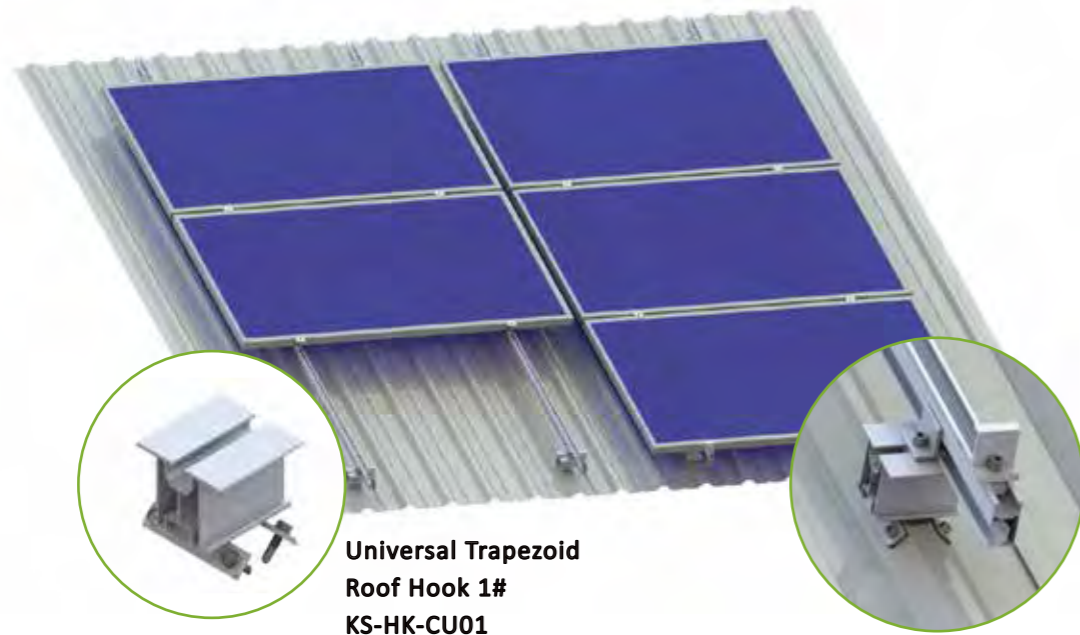


# Trapezoidal Metal Roof



**Universal Trapezoid Roof Hook 1#**  
KS-HK-CU01

**CR 3# Rail**  
KS-CR3-Length



**CR 1# Rail Splice Kit**  
KS-CR1-SP

**Middle Clamp**  
KS-IC2-F40



**CR 1# Rail Clamp**  
KS-CRC-2AN

**End Clamp**  
KS-EC2-F40



**Application:**  
Trapezoidal and corrugated sheet metal

**Fastening:**  
Riveted or screwed onto raised corrugations

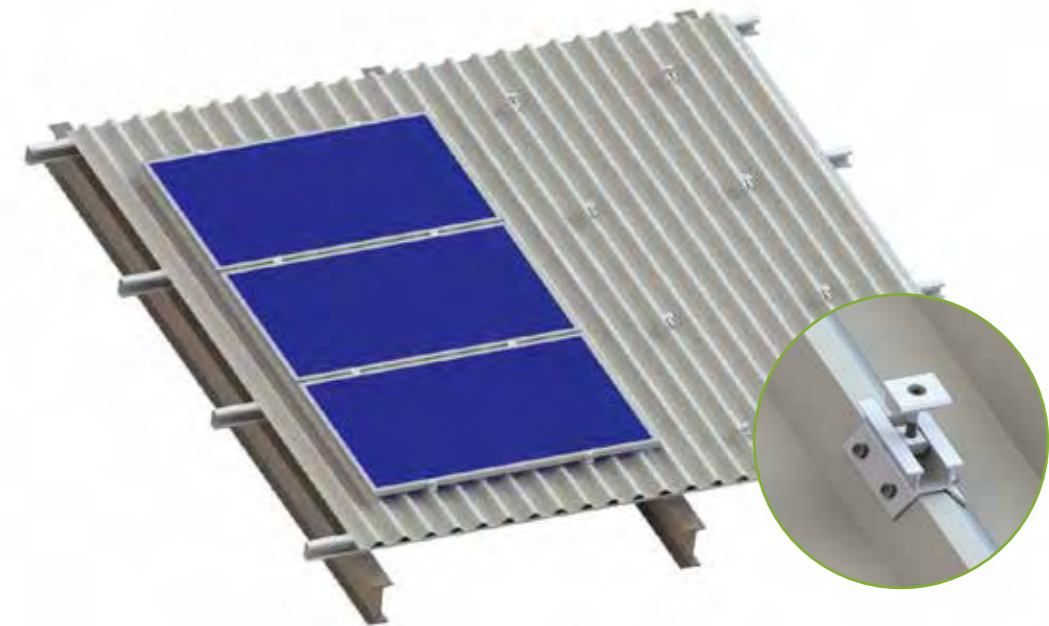
**Module Type:**  
Framed and frameless modules

**Module orientation:**  
Landscape/portrait

**Layers of Rails:**  
Single layer

**Advantages:**  
Low fitting costs  
Every size of module array possible  
With rail / railless solution  
Height adjustable via elongated hole in the sheet metal bracket

# Trapezoidal Metal Roof



**Aluminum Trapezoid Roof Hook 7#**  
KS-HK-T07N-01



**Middle Clamp**  
KS-IC2-F40



**End Clamp**  
KS-EC2-F40

**Application:**  
Trapezoidal and corrugated sheet metal

**Fastening:**  
Riveted or screwed onto raised corrugations

**Module Type:**  
Framed and frameless modules

**Module orientation:**  
Landscape/portrait

**Layers of Rails:**  
Single layer

**Advantages:**  
Low material / Low fitting costs  
Every size of module array possible  
With rail / railless solution  
Quick mounting