

Solar Ground Mount System

The aluminum profile ground mounting system can be installed on concrete foundations or screw ground piles. It's light weight, strong construction and recyclable materials. The aluminum profile ground support has been pre-installed at the factory.

Parameter

Wind Load: 52M/S

Snow Load: : 1.5KN/M²

Span Range: 2.5-3.8M

System installation angle deviation : $\pm 2^\circ$

Design Standard:AS/NZS1170, ASCE7-05,
DIN1044, BSEN1990:2002,BSEN1991-1-3:2000,
BSEN199-1-4:2005

Installation Site:Cement or Flat Roof

Main Material:AL6005-T5

Fastener Material: :SUS304

PV Module:Framed/Unframed

Module Layout:Portrait/Landscape

Warranty:10 Years



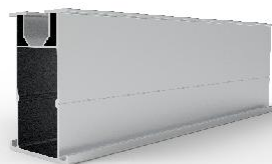
10.All Aluminum Ground Mount



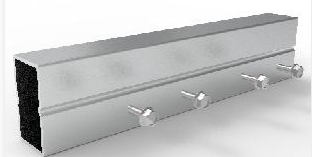
End Clamp



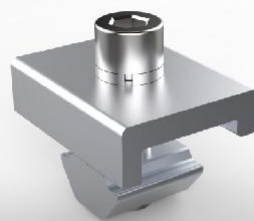
Mid Clamp



Rail



Rail Splicer



Rail Block Pre-installed Bracket