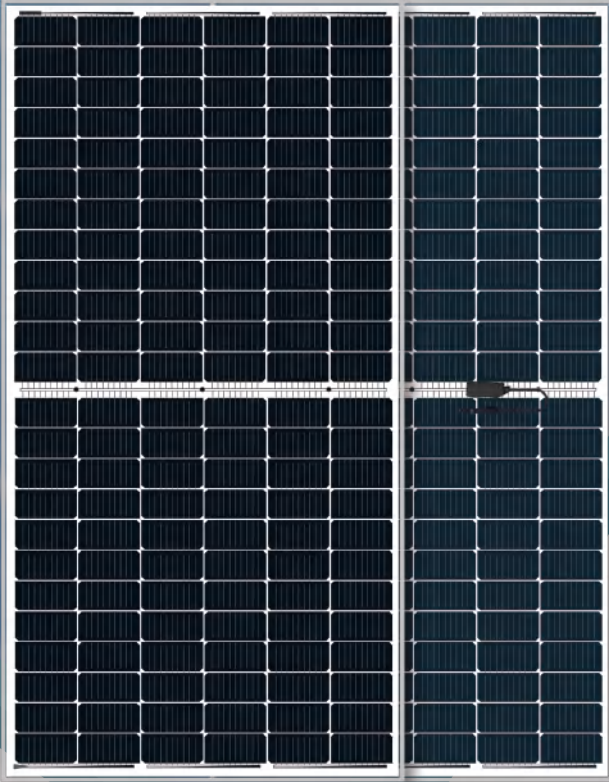




**SpolarPV**  
Easy Invest, More Returns



**21.62 %**  
Module efficiency

**470 W**  
Highest power output



Product warranty



Linear power warranty

# SPV470-PM6-144BD

## 445-470Watt



### High Efficiency

Higher power conversion efficiency benefited from advanced Passivated Emitter and Rear Cell (PERC) technology.



### Anti-reflection

Less than 20% reflectivity with minimum glare.



### Low-light Performance

Certified to withstand: wind load (2400 Pa), snow load (5400 Pa) and hail strike.



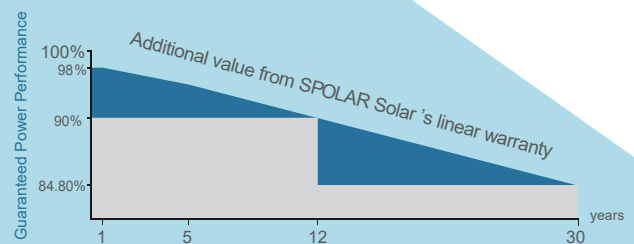
### Severe Weather Resilience

Advanced glass and cell surface texture designs ensure excellent performance in low environment.



### Durability against extreme environmental conditions

High salt mist resistance certified by IEC 61701, suitable for coastal areas.



■ Linear performance warranty ■ Standard performance warranty



ISO9001:2016 ISO14001:2016  
OHSAS18001:2011 certified factory.  
IEC61215 IEC61730 certified products.

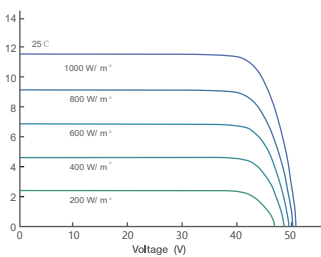
## Electrical Characteristics at Standard Test Conditions (STC)

Module Type	SPV445-PM6-144BD	SPV450-PM6-144BD	SPV455-PM6-144BD	SPV460-PM6-144BD	SPV465-PM6-144BD	SPV470-PM6-144BD
Maximum Power - Pmax (W)	445	450	455	460	465	470
Maximum Power Voltage - Vmp (V)	41.20	41.40	41.63	41.85	42.08	42.34
Maximum Power Current - Imp (A)	10.80	10.87	10.93	10.99	11.05	11.10
Open-circuit Voltage - Voc (V)	49.80	50.00	50.20	50.40	50.60	50.80
Short-circuit Current - Isc (A)	11.46	11.54	11.62	11.70	11.77	11.82
Module Efficiency STC (%)	20.47 %	20.70 %	20.93 %	21.16 %	21.39 %	21.62 %

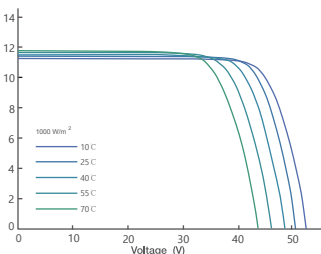
## Electrical Characteristics at Normal Operating Cell Temperature (NOCT)

Module Type	SPV445-PM6-144BD	SPV450-PM6-144BD	SPV455-PM6-144BD	SPV460-PM6-144BD	SPV465-PM6-144BD	SPV470-PM6-144BD
Maximum Power - Pmax (W)	335	339	342	346	350	354
Maximum Power Voltage - Vmp (V)	38.81	39.01	39.17	39.45	39.63	39.86
Maximum Power Current - Imp (A)	8.64	8.69	8.73	8.77	8.83	8.88
Open-circuit Voltage - Voc (V)	46.91	47.11	47.20	47.42	47.68	47.97
Short-circuit Current - Isc (A)	9.15	9.22	9.33	9.38	9.41	9.46
Power Tolerance	0 ~ +3W		Operating Temperature (°C)		-40 °C ~ +85 °C	
Temperature Coefficients of Pmax	-0.35% / °C		Maximum System Voltage		1500 V	
Temperature Coefficients of Voc	-0.275% / °C		Maximum Series Fuse Rating		25 A	
Temperature Coefficients of Isc	0.045% / °C		Nominal Operating Cell Temperature		45 ± 2 °C	

Current-Voltage Curve under different irradiance

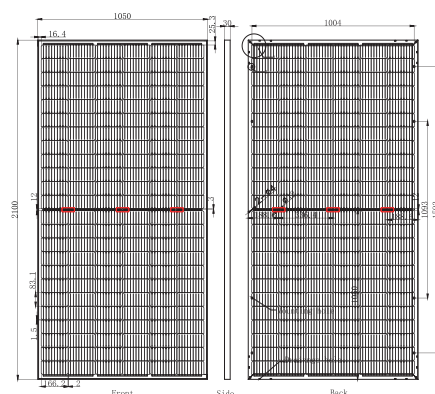


Current-Voltage Curve under different working temperatures



## Mechanical Characteristics

Cell Type	Mono-crystalline PERC 166x83 mm
No. of Cells	144 (6x24)
Dimensions	2100x1050x30 mm
Weight	27.5 kg
Glass	Dual Glass 2.0mm Heat Strengthened Glass
Frame	Anodized Aluminium Alloy
Junction Box	IP68, MC4 Compatible, 3 Bypass Diode
Output Cables	1x4.0 mm <sup>2</sup> , Length: 300 mm or Customized Length
Packaging Configuration	77pcs/stack, 847pcs/40'HQContainer ( Two pallets=One stack )



[www.spolarpv.com](http://www.spolarpv.com)