



Data sheet

Simply better IROC® SR for pitched roofs

The rail system is suitable for corrugated sheet roofs, pantile roofs and metal roofs. By means of a cross-connection, IROC® SR is also ideally suited for transverse mounting in addition to upright mounting. The module clips can be used at any point on the profile, ensuring absolute flexibility in module mounting. The roof hooks can be attached from the side or from below.

Advantages:

- ✓ Structurally proven components
- ✓ Fast assembly
- ✓ Minimal use of materials
- ✓ Suitable for all module types
- ✓ Cross mounting possible
- ✓ Module clips already pre-assembled
- ✓ Profile standard lengths 4.880 mm and 2.440 mm
- ✓ Can be used for span lengths up to 2.40 meters

Mounting type

Roof parallel

Profile length

Standard: 4.880 mm and 2.440 mm

Module size

For all common module types, also suitable for unframed modules

Module orientation

Vertical and / or transverse mounting

Roof covering

Pantiled roof, corrugated sheet roof, standing seam roof, Kalzip roof

Material

Aluminum, screw connections and roof anchors V2A

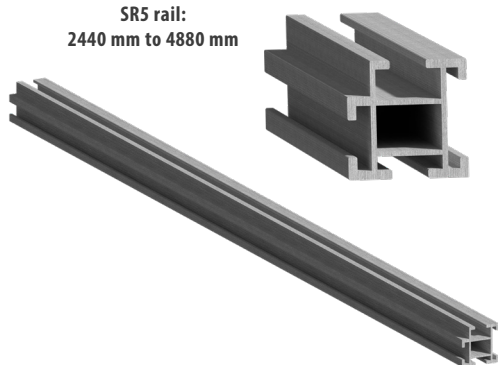
Connection

Roof hooks, hanger bolts, Kalzip clamp, sheet metal seam clamp

Requirements

The load-bearing capacity of the roof and the roof insulation must be checked and guaranteed by the customer.

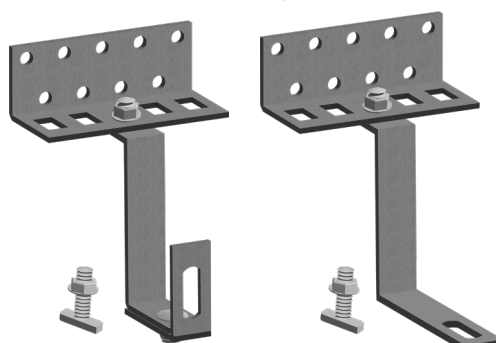
SRS rail:
2440 mm to 4880 mm



Hanger bolt
and adapter plate:



Roof hook:
available in different types,
2-times and 3-times adjustable



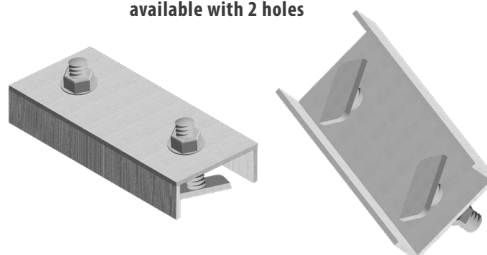
Kalzip clip:



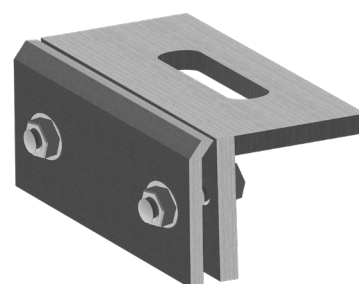
Flat head screw:



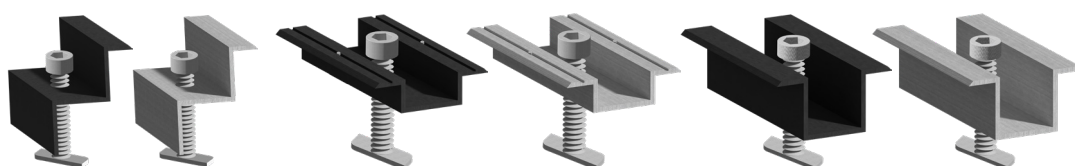
Connector for rail:
available with 2 holes



Sheet metal clip:



End- and module clips: available in black and silver, different sizes, with or without pin



Cross connector:
for double layer and
horizontal installation

