

Hybrid Solar Inverter HSI MAX Series



Stable & Durable

latest toroidal transformer could handle triple surge power
Inbuilt AVR stabilizer for stable output



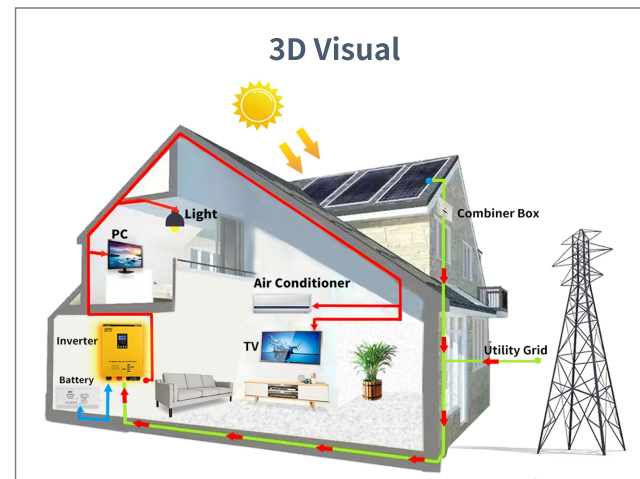
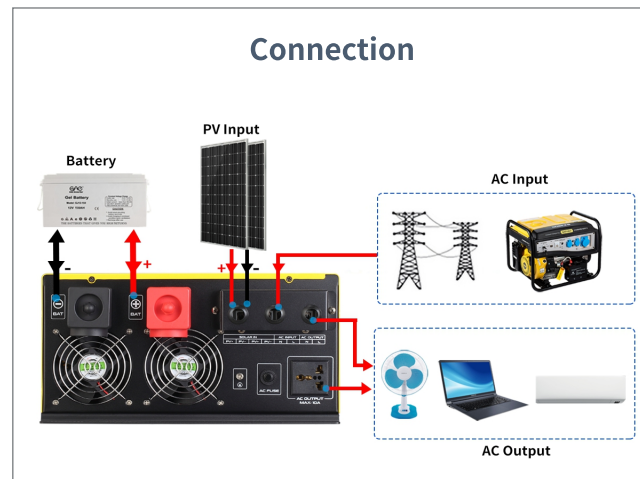
High Efficiency

Inverter transfer efficiency up to 85%
Inbuilt 35A AC & 40/60A MPPT charger efficiency more than 99%



Battery Type

Support SLA/GEL/AGM battery



Technical Specification

Model	HSI-MAX-152	HSI-MAX-202	HSI-MAX-302	HSI-MAX-402	HSI-MAX-502	HSI-MAX-602
Rated power	1.5KW	2KW	3KW	4KW	5KW	6KW
Surge power	4.5KW	6KW	9KW	12KW	15KW	18KW
AC Input & Output						
Voltage	220VAC					
Selectable Voltage Range	165-275VAC (220VAC)					
Frequency Range	50Hz/60Hz automatic recognition					
AC Voltage Regulation	(DC Batt.mode)220vac±3%					
Transfer Time	≤4ms					
Wave Form	Pure Sine Wave					
Transformer type	Toroidal					
Transfer efficiency	≥85%					
Battery						
Battery Voltage	12V/24V	24V	24V/48V			
Type	Gel/SLA/AGM/Lithumbattery					
DC Charge Voltage	13.6-14.2VDC(12V)/27.2-28.4VDC(24V)/54.4-56.8VDC(48V)					
Overcharge Protection	Battery voltage ≥16VDC (12V) ≥32VDC (24V) ≥64VDC (48V), stop charging after 60s alarm					
Solar Charge & AC Charger						
Maximum PV Array Open Circuit Voltage	25V(12V)/50V (24V)	150VDC				
Maximum PV Array Power	700W(12V)/1400W(24V)	1130W(24V)	1700W(24V)/3400W(48V)			
Maximum AC Charge Current	20A(Adjustable)			35A(Adjustable)		
Maximum Solar Charge Current	50A PWM	40A MPPT	60A MPPT			
Maximum Charging Current	70A	75A	95A			
Working Mode						
01 mode	AC mains priority mode					
02 mode	ECO mode					
03 mode	DC battery priority mode					
Packing Details						
Dimension, D*W*H(MM)	490*380*210	535*425*205	590*450*240	630*480*250		
G.W.(KGS)	11	14.5	24	28	30.5	35.3
Environment						
Humidity	0~95%(NO CONDESNSATION)					
Operating Temperature	0~60°C					
Storage Temperature	0~60°C					

*Product Specifications Are Subject To Change Without Further Notice