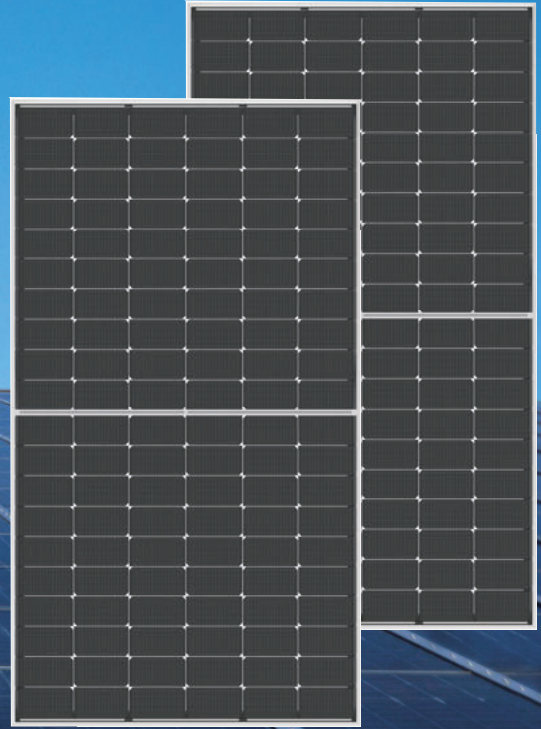


CDZ-S120/M10H-xxx 182mm Half Cell Series 440-460W

120-CELL HALF CUT MONOCRYSTALLINE SOLAR MODULE



Product Advantages



10BB half-cut cell technology

New circuit design, lower internal current, lower R_s loss
Ga doped wafer, attenuation <math><2\%</math> (1st year) / $\leq 0.55\%$ (Linear)



Significantly lower the risk of hot spot

Special circuit design with much lower hot spot temperature



Lower LCOE

2% more power generation, lower LCOE



Excellent Anti-PID performance

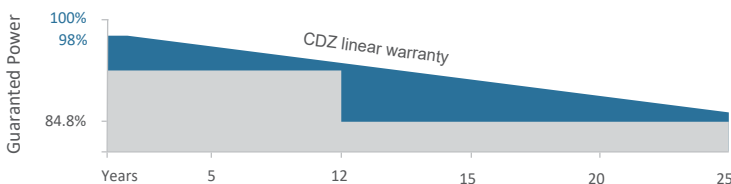
2 times of industry standard Anti-PID test by TUV SUD



IP68 junction box

High waterproof level

Product Guarantee



460W

Highest power output



12 Years

Material & Workmanship warranty



21.2%

Module efficiency



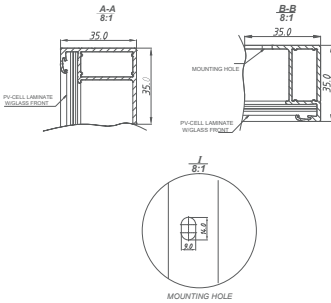
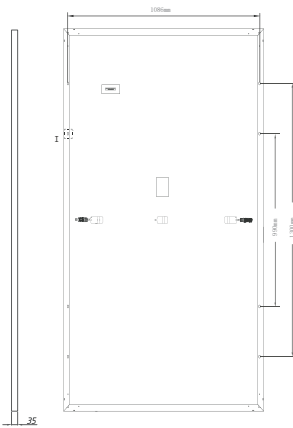
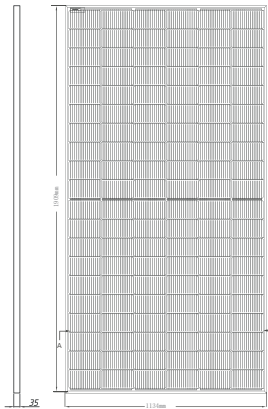
25 Years

Linear power output warranty

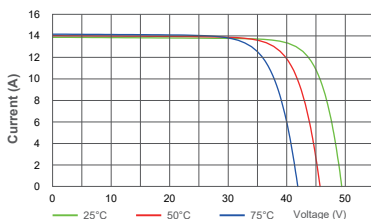
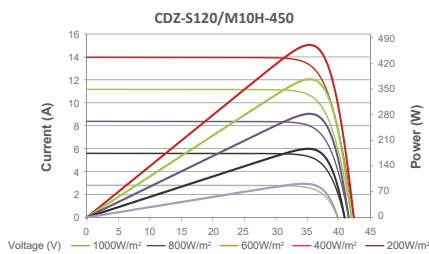


CDZ-S120/M10H-XXX

TECHNICAL DRAWINGS



I-V CURVE



ELECTRICAL PARAMETERS

	440	445	450	455	460
Maximum Power (Pmax/W)*	440	445	450	455	460
Operating Voltage (Vmp/V)	33.9	34.1	34.3	34.5	35.3
Operating Current (Imp/A)	12.98	13.06	13.14	13.20	13.04
Open-Circuit Voltage (Voc/V)	41.0	41.2	41.4	41.6	42.6
Short-Circuit Current (Isc/A)	13.41	13.49	13.60	13.69	13.74
Module Efficiency ηm(%)	20.3	20.6	20.8	21.0	21.2
Power Tolerance(W)	0~+5				

STC: Irradiance 1000W/m², module temperature 25 °C, AM=1.5, *Measuring tolerance: ±3%

Performance at NMOT

	330	334	338	342	351
Maximum Power (Pmax/W)	330	334	338	342	351
Operating Voltage (Vmp/V)	31.4	31.6	31.8	32.0	33.3
Operating Current (Imp/A)	10.52	10.58	10.64	10.71	10.55
Open-Circuit Voltage (Voc/V)	37.8	37.9	38.1	38.3	40.4
Short-Circuit Current (Isc/A)	11.19	11.28	11.36	11.45	11.06

NMOT: Irradiance 800W/m², ambient temperature 20 °C, AM=1.5, wind speed 1m/s

MECHANICAL SPECIFICATION

Cell Type	Monocrystalline
Cell Dimensions	182*182mm
Cell Arrangement	120 (6*20)
Weight	24kg
Module Dimensions	1909*1134*35mm
Cable Length	Portrait 350mm/Customized
Cable Cross Section Size	TÜV: 4mm ²
Front Glass	3.2mm AR Coating Tempered Glass
No. of Bypass Diodes	3/6
Packing Configuration	31pcs/Carton, 744pcs/40HQ
Frame	Anodized Aluminium Alloy
Junction Box	IP68

OPERATING CONDITIONS

Maximun System Voltage	1000V/1500V/DC(IEC)
Operating Temperature	-40°C to +85°C
Maximun Series Fuse	25A
Static Loading	Snow Loading: 5400Pa/ Wind Loading: 2400Pa
Conductivity at Ground	≤0.1Ω
Safety Class	II
Resistance	≥100MΩ
Connector	MC4 compatible

TEMPERATURE COEFFICIENT

Temperature Coefficient Pmax	-0.34%/°C
Temperature Coefficient Voc	-0.25%/°C
Temperature Coefficient Isc	+0.040%/°C
NMOT	43±2°C