

Hybrid Solar Inverter FTS Series



[Remote control]
Sell separately



Smart Control

Five smart control mode, auto switch for different demand
RS485 communicational portal, for app & external screen control



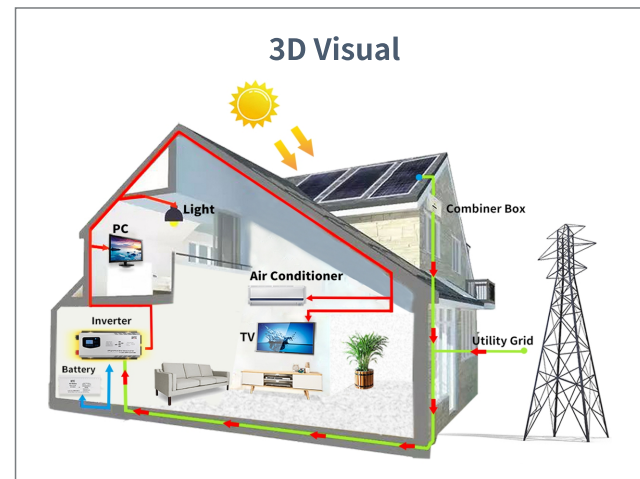
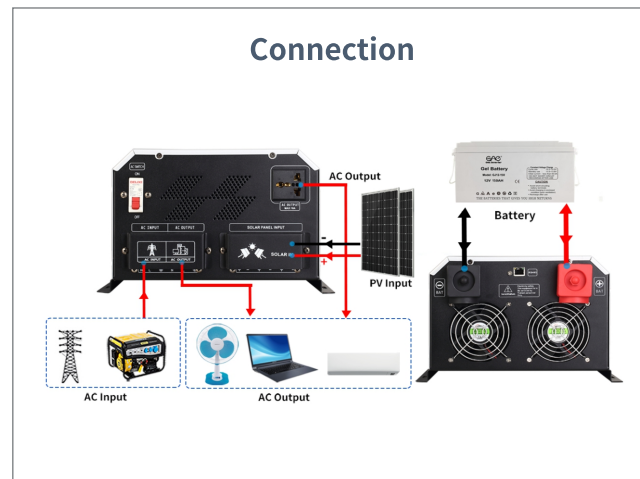
High Efficiency

Inverter transfer efficiency up to 85%
Inbuilt 30/60A MPPT efficiency more than 99%



Battery Type

Support SLA/AGM/GEL/lithium lifepo4 battery



Technical Specification

Model	FTS-152	FTS-202	FTS-302	FTS-402	FTS-502	FTS-602
Rated power	1.5KW	2KW	3KW	4KW	5KW	6KW
Surge power	4.5KW	6KW	9KW	12KW	15KW	18KW
AC Input & Output						
Voltage	220VAC					
Selectable Voltage Range	165-275VAC (220VAC)					
Frequency Range	50Hz/60Hz automatic recognition					
AC Voltage Regulation (BATT. Mode)	(DC Batt.mode)220vac±3%					
Transfer Time	≤4ms					
Wave Form	Pure Sine Wave					
Transformer type	Toroidal					
Transfer efficiency	≥85%					
Battery						
Battery Voltage	12V/24V	12V/24V/48V	24V/48V			
Type	Gel/SLA/AGM/Water/Lithium(lifepo4) Battery					
DC Charge Voltage	12~16VDC(12V)/20~32VDC(24V)/40~64VDC(48V)					
Overcharge Protection	Battery voltage ≥16VDC (12V) ≥32VDC (24V) ≥64VDC (48V), stop charging after 60s alarm					
Solar Charge & Ac Charger						
Maximum PV Array Open Circuit Voltage	150VDC					
Maximum Pv Array Power	900W(12V)/1700W(24V)/3400W(48V)					
Maximum Ac Charge Current	35A(adjustable)					
Maximum Solar Charge Current	30/60AMPPT (OPTIONAL)		60A MPPT			
Maximum Charging Current	95A		95A			
Working mode						
01 mode	AC mains priority mode					
02 mode	ECO mode					
03 mode	DC battery priority mode					
04 mode	Generator mode					
05 mode	Unattended mode					
Communication Port						
Type	RS485, available for wifi box & external control screen					
Physical						
Dimension, D*W*H(MM)	600*380*280			780*380*280		
G.W.(KGS)	19	21	23	30	32	36
Environment						
Humidity	0~95%(NO CONDESNSATION)					
Operating Temperature	0~60°C					
Storage Temperature	0~60°C					

*Product Specifications Are Subject To Change Without Further Notice