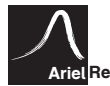


S680M66NT4BF S685M66NT4BF
S690M66NT4BF S695M66NT4BF
S700M66NT4BF

Shinson is a leading professional supplier in the renewable energy industry, specializing in the production and distribution of high-quality PV modules, completed PV kits, and energy storage solutions. With a commitment to sustainable energy solutions, we strive to provide innovative and reliable products to meet the growing global demand for clean and efficient power generation.

With a focus on quality, innovation, and customer satisfaction, we strive to empower individuals, businesses, and communities with reliable and sustainable energy solutions. By harnessing the power of the sun and embracing renewable energy, we are driving the transition towards a greener and more sustainable future.

S-Max™ series of PV modules are designed for commercial projects and large solar farms with highest power output for saving more than 15% of BOS.



High power with high efficiency bifacial solar cells

High power output design to save BOS(balance of system) cost, less payback time.



High reliability with top quality raw materials

Built with top qualified and certified materials to ensure the performance during long working period and working in tough conditions



Longer life span with 30 years warranty

Shinson extended the warranty period up to 30 years for both performance and workmanship which is on top level of the industry for backsheet modules.



Lower power degradation with more generation

Ensured PID resistance through cell process and module material control to help harvest more, guaranteed only 0.4% annual power degradation .

S.max™ Solar Modules

N-TOPcon

700W

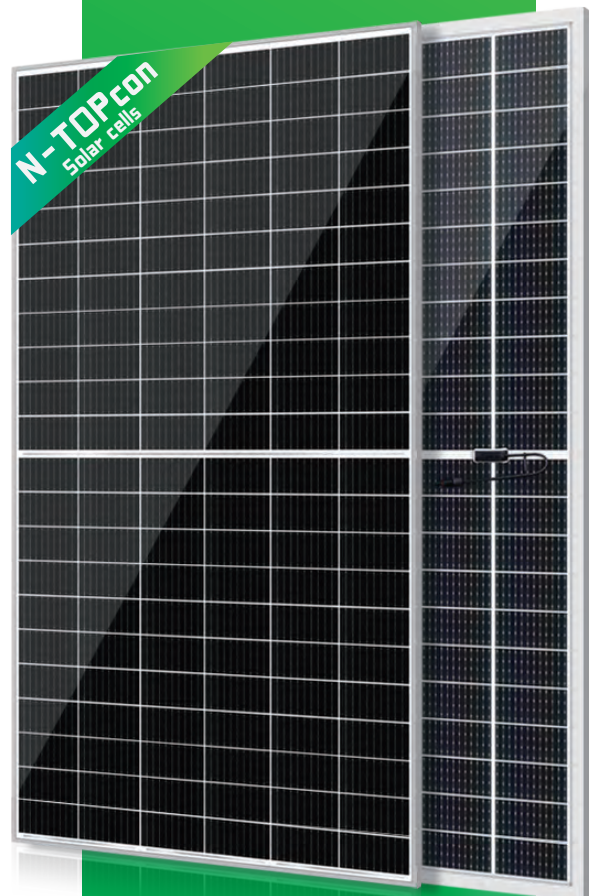
Maximum Output Power

132

Bifacial Cells

10~30%

Extra Backside Gains



Electrical Data (STC)

Part Number	S680M66NT4BF	S685M66NT4BF	S690M66NT4BF	S695M66NT4BF	S700M66NT4BF
Peak Power Watts-P _{MAX} (Wp)*	680	685	690	695	700
Power Output Tolerance	0/+5W				
Open Circuit Voltage-V _{oc} (V)	46.50	46.69	46.88	47.07	47.26
Short Circuit Current-I _{sc} (A)	18.69	18.74	18.79	18.84	18.89
Maximum Power Voltage-V _{MPP} (V)	38.55	38.74	38.94	39.13	39.33
Maximum Power Current-I _{MPP} (A)	17.64	17.68	17.72	17.76	17.80
Panel Efficiency(%)	21.89	22.05	22.21	22.37	22.53

STC :Irradiance 1000w/m²,Cell Temperature 25°C *Mearsure tolerance:±3%

Electrical Data (NOCT)

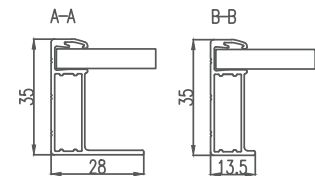
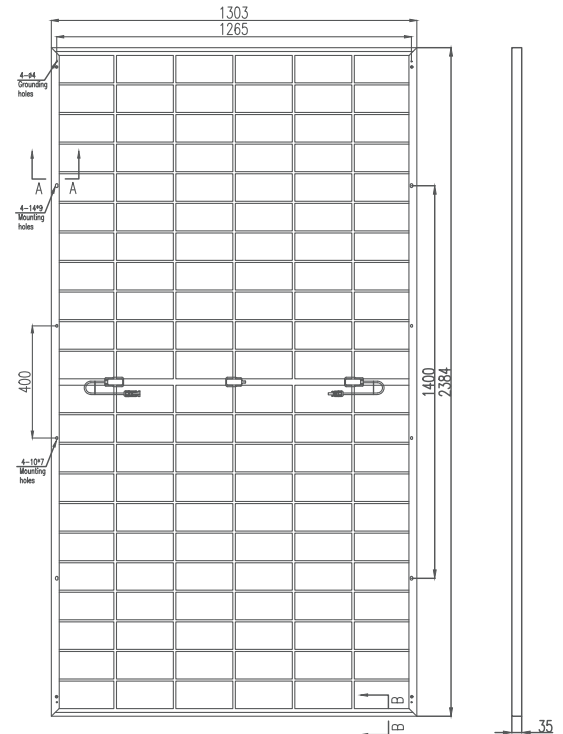
MaximumPower-P _{MAX} (Wp)*	513	517	521	525	529
Open Circuit Voltage-V _{oc} (V)	44.37	44.56	44.75	44.94	45.13
Short Circuit Current-I _{sc} (A)	15.05	15.09	15.13	15.17	15.21
Maximum Power Voltage-V _{MPP} (V)	36.15	36.36	36.56	36.74	36.94
Maximum Power Current-I _{MPP} (A)	14.19	14.22	14.25	14.29	14.32

NOCT:Irradiance at 800W/m²,Ambient Temperature 20°C,Wind Speed 1m/s

Mechanical Data

Panel Dimension(H/W/0)	2384x1303x35mm
Weight	38kg
Cell Type	N type Mono-crystalline
Cell Number	132
Front / Back Glass	Double Glass AR coating semi-tempered glass
Frame Type	Anodized Aluminium Alloy
Junction Box Protection Class	IP 68
Cables	TUV 1x4.0mm², (+): 400mm , (-): 200mm or Customized Length

Dimensions of PV Module(mm)



Temperature Ratings

Nominal Operating Cell Temp.(NOCT)	42°C(±2°C)
Temperature Coefficient of P _{MAX}	-0.310%/°C
Temperature Coefficient of V _{oc}	-0.260%/°C
Temperature Coefficient of I _{sc}	+0.046%/°C

* Do not connect Fuse in Combiner Box with two or more strings in parallel connection

Maximum Ratings

Operational Temperature	-40~±85 °C
Front/Rear Side Load	5400/2400pa
Max Series Fuse Rating	30A
Max System Voltage	1500V (IEC)
Fire Rating	Class 1(UN19177)

Packaging Configuration

Modules per box	31 pieces
Modules per 40'container	558 pieces

Warranty

Product Workmanship Warranty	30 years
Output Power Warranty	30 years

