



Monocrystalline Photovoltaic Module

LEPVV 144 HALF-CUT PLUS

STANDARD 550 Wp



QUALITY



Optimal performance
Power and efficiency



Reduced BOS
Cost effective product



+5W
Positive power tolerance



Fire resistance
Maximum protection



Avoid losses
Better shading tolerance



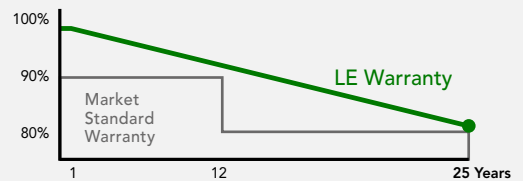
Efficiency
Over 21% efficiency



WARRANTIES

20 YEARS PRODUCT WARRANTY
+5 years for Premium Partners

25 YEARS PERFORMANCE WARRANTY
Linear Warranty



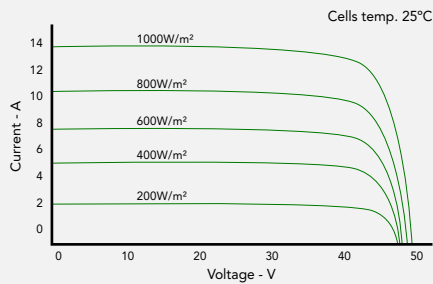
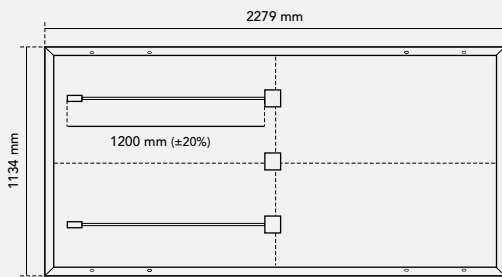
CERTIFICATES





TECHNICAL FEATURES

LEPV 144 HALF-CUT PLUS 550W_p 2023EN



FRAME

Silver anodized aluminium

Robust and resistant to corrosion

JUNCTION BOX

Sealed, robust and wide for heat dissipation

IP67/IP68 according to IEC 60529

Diodes by-pass built-in 3

Connector MC4 compatible

Cables 1200 mm (±20%) length and 4 mm² section

FRONTAL

3,2 mm thick tempered glass with high strength and ARC

Textured, extra-clear with low iron content

Frontal load (snow) 5400 Pa | Back load (wind) 2400 Pa

SOLAR CELLS

144 [2x(12x6)] cells monocrystalline silicon

WEIGHT AND DIMENSIONS

28 Kg | 2279 x 1134 x 35 mm (±1%) | Pack: 620 pcs-truck

ELECTRIC DATA

STANDARD	LEPV 550
STC: 1000 W/m², module temperature 25°C, AM 1,5	
Nominal power. P _{max}	550 W _p
Max. power tolerance. P _{max}	0 / +5 W
Area of the module	2,58 m ²
Module efficiency	21,30 %
I _{sc}	13,93 A
V _{oc}	49,97 V
I _{mp}	13,12 A
V _{mp}	41,95 V
NOCT: 800 W/m², ambient temperature 20°C, AM 1,5	
Nominal power. P _{max}	417,32 W
I _{sc}	11,24 A
V _{oc}	47,41 V
I _{mp}	10,60 A
V _{mp}	39,39 V
Operating parameters. Temperature coefficients	
Maximum voltage	1000 - 1500 V
Maximum series fuse rating. I _r	25 A
α I _{sc}	0,047 % / °C
β V _{oc}	- 0,27 % / °C
γ P _{max}	- 0,34 % / °C
Temperature range	- 40°C ~ + 85 °C
NOCT	44 ± 2 °C

NOTE: Read the instruction manual of this product and follow the indications STC. Values are valid for: 1000W/m², AM 1,5 and cells temperature of 25°C. Measurement tolerance +/-3% (AAA Solar simulation -IEC 60.904-9-). All the information of this brochure may be amended without notice by Lina Energy.