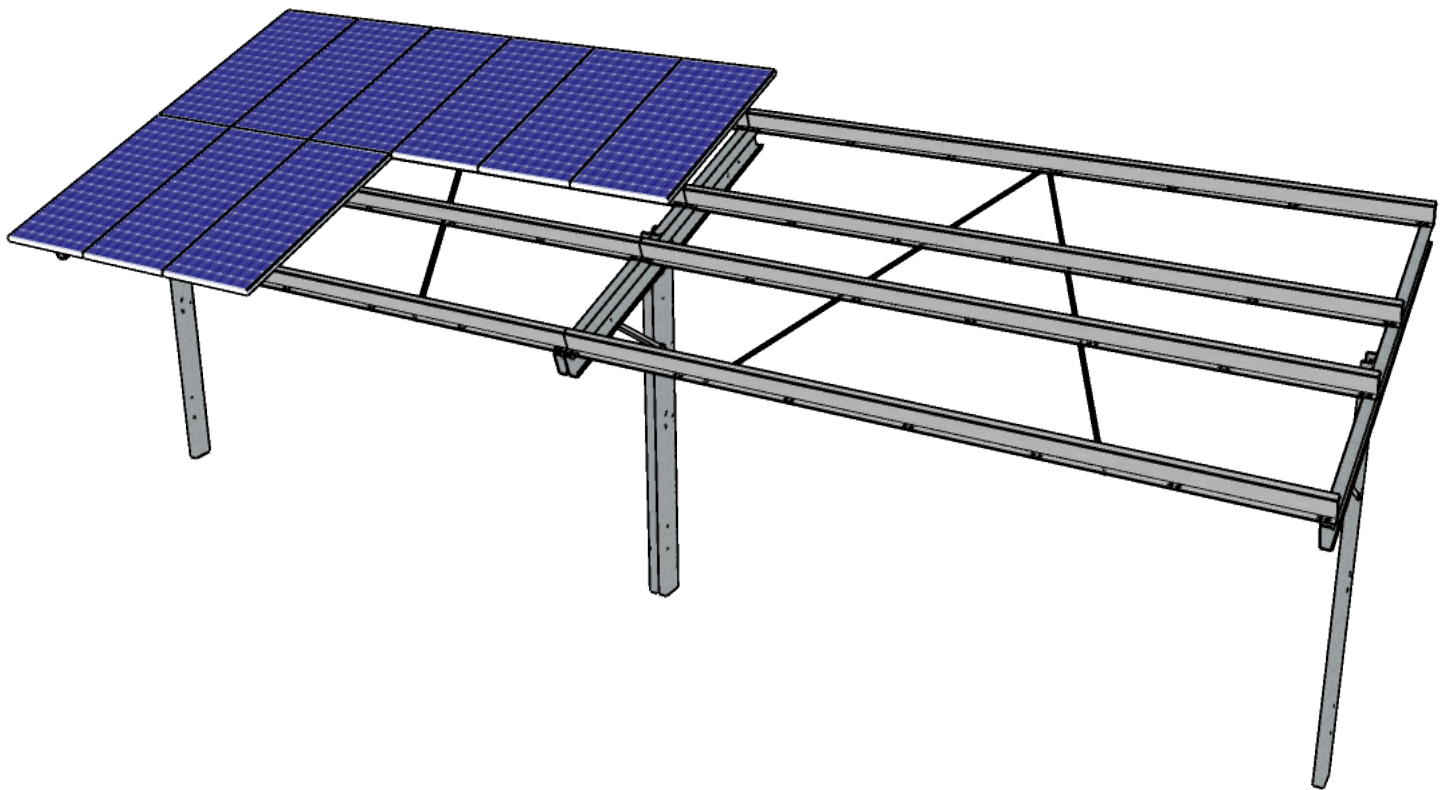


25 YEAR
WARRANTY

Solar Ground Mounts - Simple & Efficient

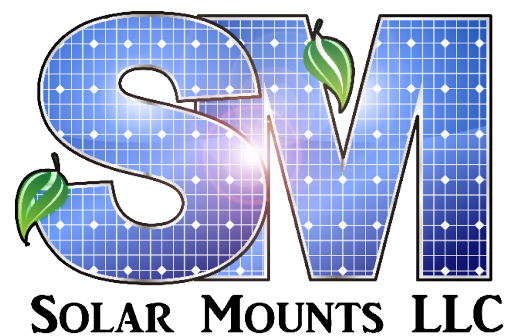
Utility scale solar racking with reduced components and minimal installation time. Over a decade of proven reliability and a 25 year warranty to serve the lifetime of your solar array.



The features of our GROUND MOUNTS

Featuring fewest components and hardware connections in the market with high flexibility for rough & variable terrain. The panel attachments feature UL 2703 & 467 grounding top-clamps and can sustain up to 150 MPH windload & 60 PSF snow load

Call for immediate estimates & layout design assistance from one of our professional sales team.

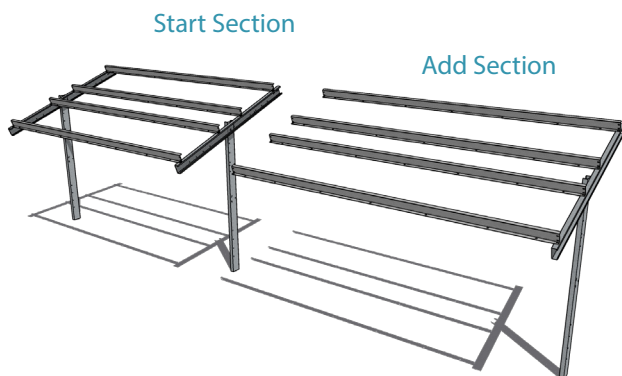


1-844-757-7225

www.SolarMounts.com
300 Woolley | Marshall | MI 49068
info@solargroundmounts.com

25 YEAR
WARRANTY

TECHNICAL INFORMATION



Features and benefits

- 3 Components & Minimal Hardware
- Pre-Punched tilt angles in truss
- UL 467 & 2703 grounding clamps
- Slide in purlins for ease of installation
- Minimal lead times on manufacturing
- PE Stamped drawing provided
- Accommodates difficult terrain

Technical characteristics

Application	Open Field Layout
Foundation	C-Channel, I-beam, or Helical
Modules	Portrait - 1 or 2 high
Orientation	
Module Compatibility	All brands - 60, 72, & 96 Cell
Tilt Angles	20° 25° 30° & 35° Standard
Ground Clearance	2' Standard, 36" - 48" available
Grade of Terrain	EW - 15°, Tolerance for Rolling & Undulating Ground
Wind Load	Up to 150 MPH
Snow Load	Up to 60 PSF
Purlin Length	242" (239.1" of useable rail)
Post Spacing	239.1"
Material Composition	Galvanized Steel G-90 Post, Truss & Purlins
Warranty	25 years



2 MW - Plumsted School
New Jersey



3 MW - Rockford Airport
Illinois



2 MW - Saratoga Springs
New York



3.1MW - Bridgewater
New Jersey



3.4MW - Southbridge
Massachusetts



1.2MW - Garner
North Carolina

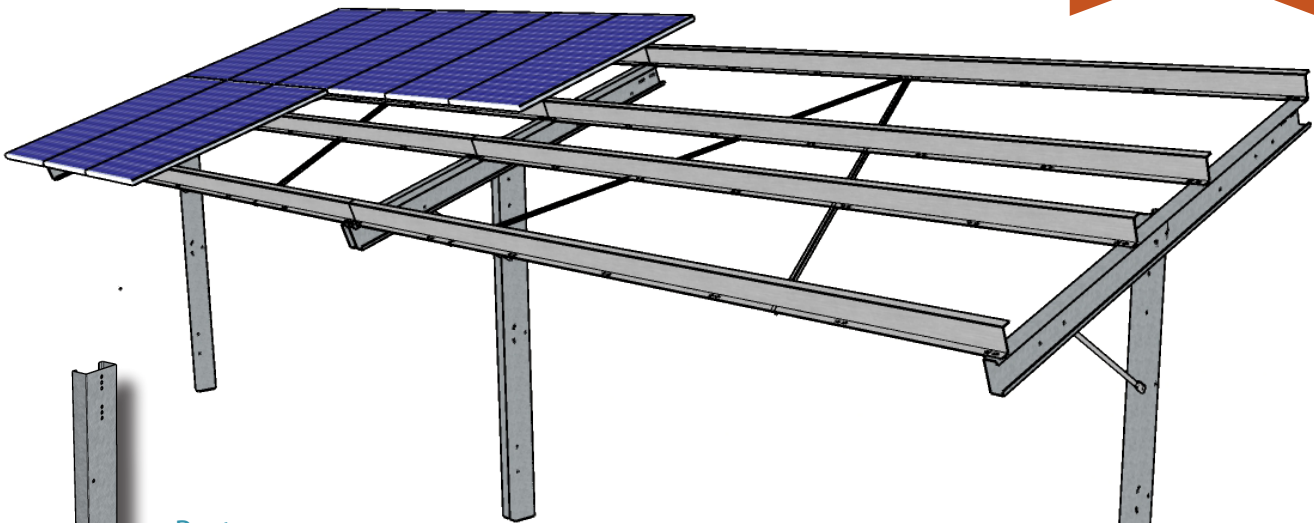


1-844-757-7225

www.SolarMounts.com
300 Woolley | Marshall | MI 49068
info@solargroundmounts.com

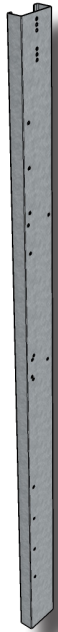
25 YEAR
WARRANTY

COMPONENTS



Post

G-90 pregalvanized Steel
Available in other finishes.



Truss

G-90 Finish with Purlin
Mounting Holes and slotted
for ± 1 " of tolerance.



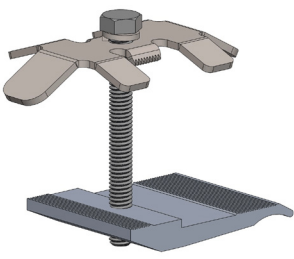
Strutt

Post to Truss strut
connection braces truss
in place.



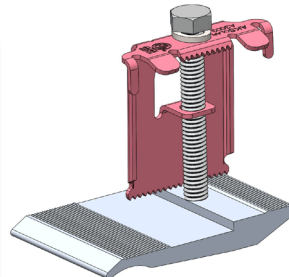
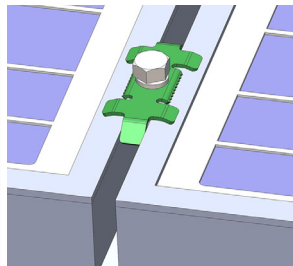
Purlin

System mounts 6 panels long 12
panels per section. 11 Gage G90
Steel. (239.1" Useable Rail)



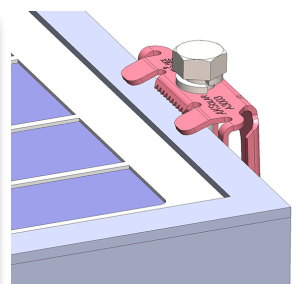
Mid Clamp

Panel to Panel Grounding Mid-Clamp
Recognized to UL 2703 and ETL listed
to UL standard 467.



End Clamp

Panel to Purlin Grounding End-Clamp
Recognized to UL 2703 and ETL listed
to UL standard 467.



1-844-757-7225

www.SolarMounts.com
300 Woolley | Marshall | MI 49068
info@solargroundmounts.com