

Aluminium mounting structures
for East-West
photovoltaic panels "2"

4900



sales.pespa@pespagroup.com



Website: www.pespagroup.com



Address: Lagjia 14, Shkozet Durrës, Albania



Pespa Alumin



Pespa Alumin



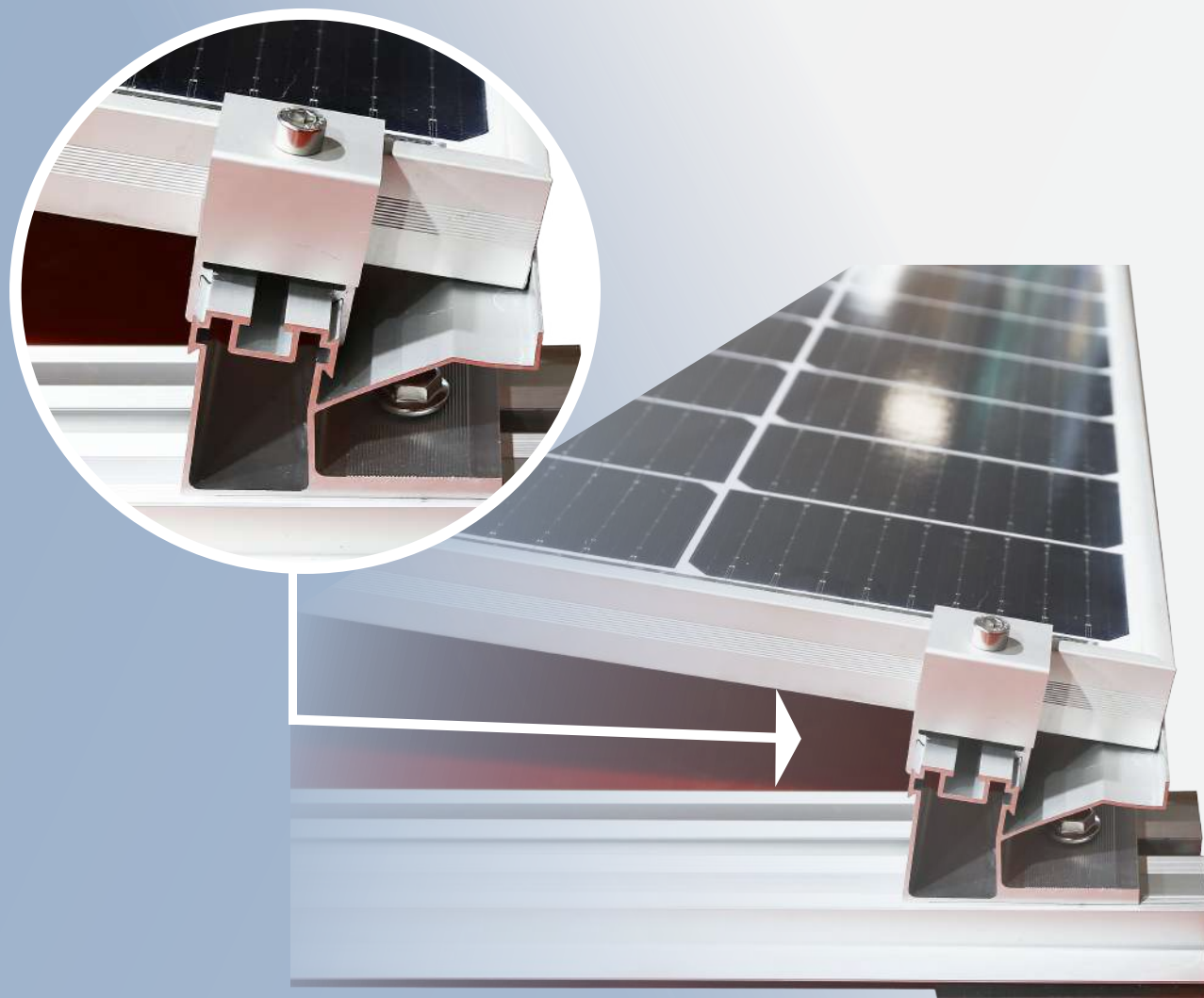
PROFILES, ACCESSORIES AND KITS FOR ALUMINUM STRUCTURES OF PHOTOVOLTAIC PANELS

- One of the most innovative and practical flat roof mounting system is the east-west orientation. Becoming an industry trend rapidly, these structures can squeeze in more rows and panels, and therefore generate a greater capacity than other south-north facing systems.
- They can be installed in two different angle inclinations such as 10 degrees or 12 degrees.
- The triangular supporting structure is made out of an aluminum "L" shaped profile with 50x50 mm dimensions (non-adjustable angle) which is very lightweight, ballast-optimized and makes the entire system very convenient and economic.

Our manufacturing capacity is not only limited producing this standard solar structure for flat roof but also gives the customer freedom to customize its own product including their specific drawings and requests regarding the triangle structures, profiles and accessories, technical properties and to reach needed static requirements.

PESP  **LUMIN**

4900



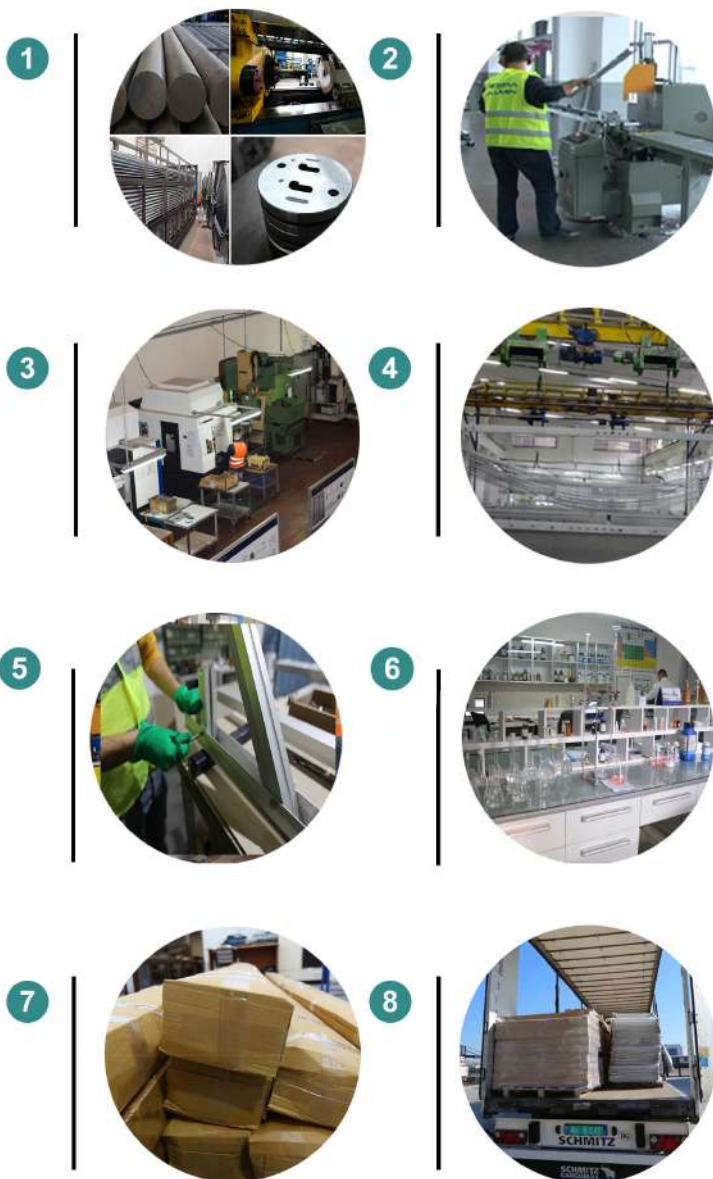
The unified capacity of production units, combining with closed-cycle production processes, offers the possibility of realizing large projects in due time and with maximum flexibility.

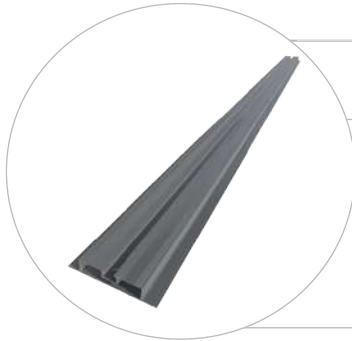
PRODUCTION CYCLE

ALUMINIUM SUPPORTING STRUCTURES FOR PHOTOVOLTAIC SYSTEMS

The production cycle of this product consists in:

- 1 **Extrusion of profiles-** Aluminum profiles production in extrusion presses
- 2 **Cutting and working center process-** Cutting of aluminium profiles according to the dimensions and designs and processing in working centers.
- 3 **Aluminium accessories manufacturing-** production of the accessories through processes such as milling, drilling, turning, threading and adjusting.
- 4 **Anodizing of aluminum profiles and accessories-** surface treatment with anodizing
- 5 **Assembling-** Assembly of modules and kits to be installed as per customised design
- 6 **Quality Control**
- 7 **Packaging and storage**
- 8 **Transport**





4900-PEGA-MBA-4327/2200

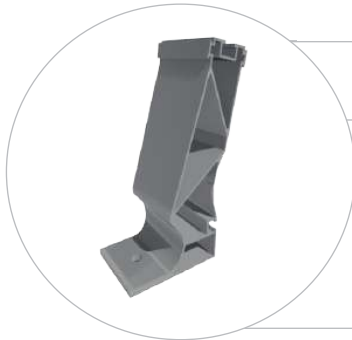
Aluminium horizontal solar profile 115×20 mm with cutting 2200 mm ,for east-west mounting structure with 5 EPDM rubber gasket 100x50x10 mm



4900-PEGA-MZI-4327/2200

Aluminium horizontal solar profile 115×20 mm with cutting 2200 mm ,for east-west mounting structure with 5 EPDM rubber gasket 100x50x10 mm

Note: Various profiles lengths can be made according to the order



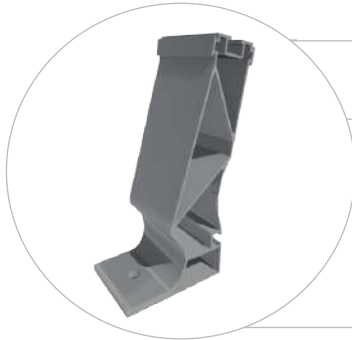
4900-PEGA-MBA-4313/73-10

Aluminium small horizontal solar component with cutting 73 mm for 10 degree east-west mounting structure for flat roof



4900-PEGA-MZI-4313/73-10

Aluminium small horizontal solar component with cutting 73 mm for 10 degree east-west mounting structure for flat roof



4900-PEGA-MBA-4313/73-12

Aluminium small horizontal solar component with cutting 73 mm for 12 degree east-west mounting structure for flat roof

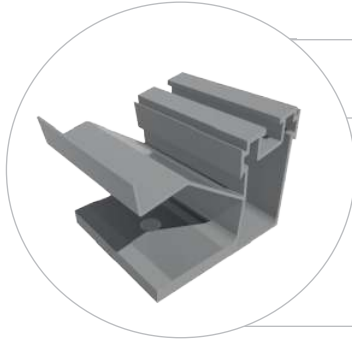


4900-PEGA-MZI-4313/73-12

Aluminium small horizontal solar component with cutting 73 mm for 12 degree east-west mounting structure for flat roof

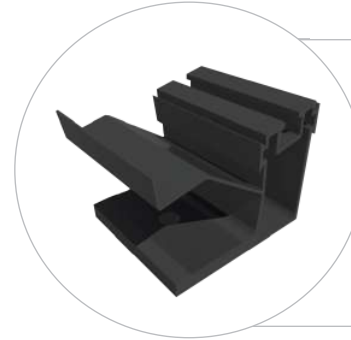
Technical additional information

- ◆ System of aluminium and profiles: East West system
- ◆ Raw material: Primary aluminium alloy 6063-**Provided in: Mill finished, natural anodized and black anodized surface**
- ◆ Fixing type: Roof mounted



4900-PEGA-MBA-4326/73-10

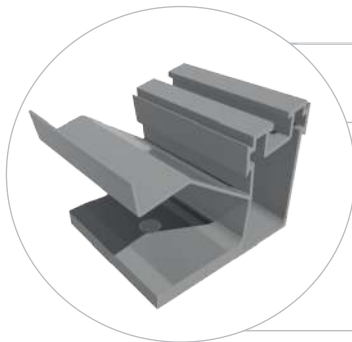
Aluminium big horizontal solar component with cutting 73 mm for 10 degree east-west mounting structure for flat roof



4900-PEGA-MZI-4326/73-10

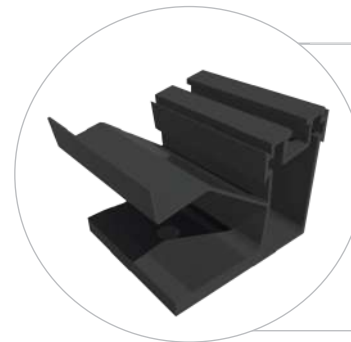
Aluminium small horizontal solar component with cutting 73 mm for 10 degree east-west mounting structure for flat roof

Note: Various profiles lengths can be made according to the order



4900-PEGA-MBA-4326/73-12

Aluminium big horizontal solar component with cutting 73 mm for 12 degree east-west mounting structure for flat roof

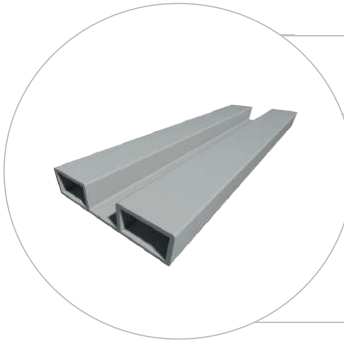


4900-PEGA-MZI-4326/73-12

Aluminium big horizontal solar component with cutting 73 mm for 12 degree east-west mounting structure for flat roof

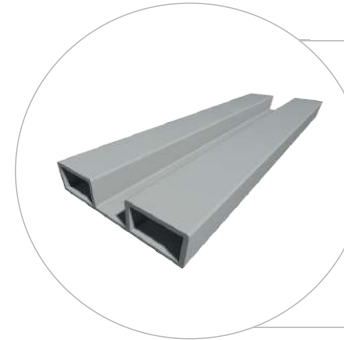
Technical additional information

- ◆ System of aluminium and profiles: East West system
- ◆ Raw material: Primary aluminium alloy 6063-**Provided in: Mill finished, natural anodized and black anodized surface**
- ◆ Fixing type: Roof mounted



4900-PEGA-MBA-4328/127

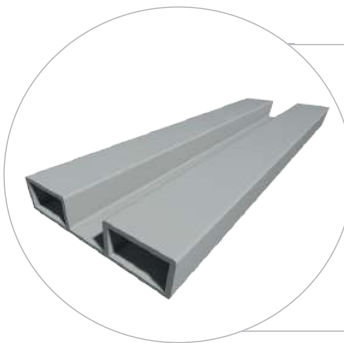
Solar aluminium universal adapter profile 77x17mm with cutting 127 mm length, for east-west mounting structure



4900-PEGA-MBA-4328/267

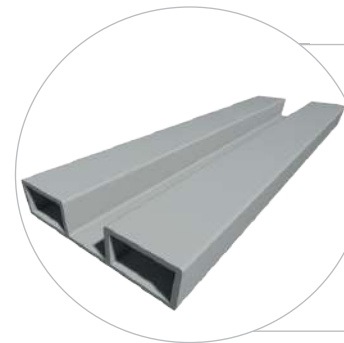
Solar aluminium universal adapter profile 77x17 mm with cutting 267 mm length, for east-west mounting structure

Note: Various profiles lengths can be made according to the order



4900-PEGA-MBA-4328/367

Solar aluminium universal adapter profile 77x17 mm with cutting 367 mm length, for east-west mounting structure



4900-PEGA-MBA-4328/567

Solar aluminium universal adapter profile 77x17 mm with cutting 567 mm length, for east-west mounting structure

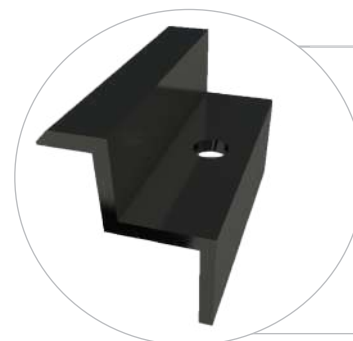
Technical additional information

- ◆ System of aluminium and profiles: East West system
- ◆ Raw material: Primary aluminium alloy 6063-**Provided in: Mill finished, natural anodized**
- ◆ Fixing type: Roof mounted



4900-PEGA-MBA-2673/60

Aluminium end clamp for solar panel fixing 60 mm length, available for various panel thickness



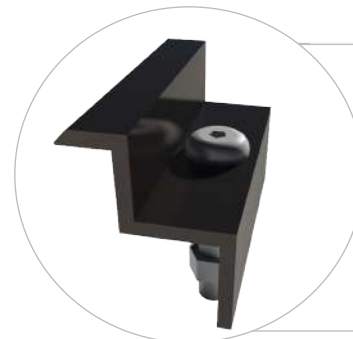
4900-PEGA-MZI-2673/60

Black aluminium end clamp for solar panel fixing 60 mm length, available for various panel thickness



4900-PEGA-MBA-2673-60/V

Aluminium end clamp 60 mm length, available for various panel thickness, with stainless steel M8 bolt and nut



4900-PEGA-MZI-2673-60/V

Black aluminium end clamp 60 mm length, available for various panel thickness, with stainless steel M8 bolt and nut



4900-PEGA-MBA-2673-60-V+PSR68

Aluminium end clamp 60 mm length available for various panel thickness with slot nut

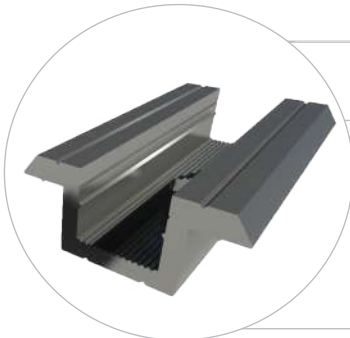


4900-PEGA-MZI-2673-60-V+PSR68

Black aluminium end clamp 60 mm length available for various panel thickness with slot nut

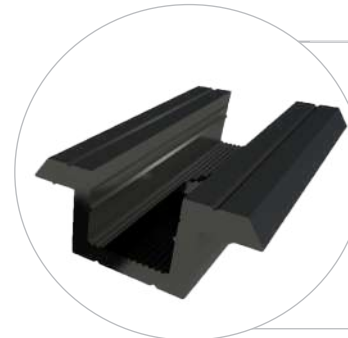
Technical additional information

- ◆ System of aluminium and profiles: For East-West system
- ◆ Raw material: Primary aluminium alloy 6060/6063-**Provided in: Mill finished, natural anodized and black anodized surface**
- ◆ Fixing type: Mounting with screws on the trapezoidal sheet or sandwich panel



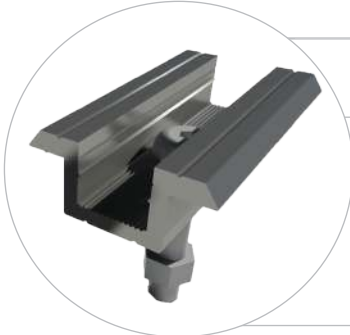
4900-PEGA-MBA-2679/60

Aluminium mid clamp for solar panel fixing 60 mm length, available for various panel thickness



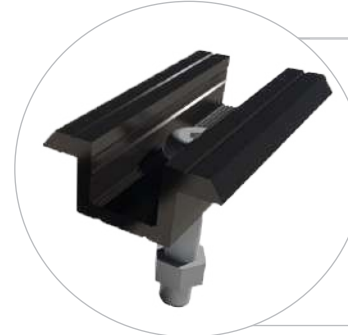
4900-PEGA-MZI-2679/60

Black aluminium mid clamp for solar panel fixing 60 mm length, available for various panel thickness



4900-PEGA-MBA-2679-60/V

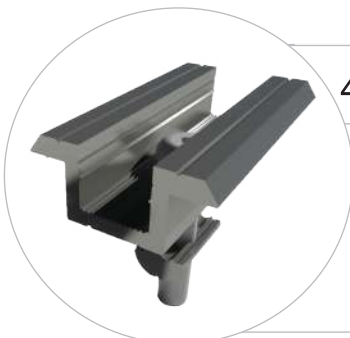
Aluminium mid clamp 60 mm length, available for various panel thickness, with stainless steel M8 bolt and nut



4900-PEGA-MZI-2679-60/V

Black aluminium mid clamp 60 mm length, available for various panel thickness, with stainless steel M8 bolt and nut

CUSTOM- MADE LENGTHS ARE AVAILABLE BASING ON PANEL MODULE HEIGHT



4900-PEGA-MBA-2679-60-V+PSR68

Aluminium mid clamp 60 mm length available for various panel thickness with slot nut

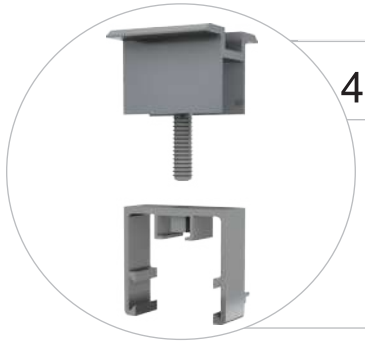


4900-PEGA-MZI-2679-60-V+PSR68

Black aluminium mid clamp 60 mm length available for various panel thickness with slot nut

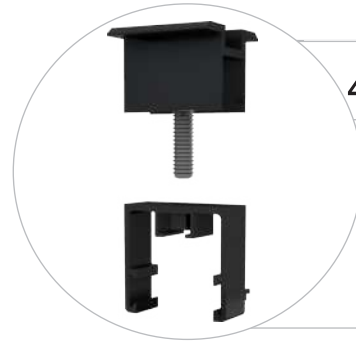
Technical additional information

- ◆ System of aluminium and profiles: For East-West system
- ◆ Raw material: Primary aluminium alloy 6060/6063-**Provided in: Mill finished, natural anodized and black anodized surface**
- ◆ Fixing type: Mounting with screws on the trapezoidal sheet or sandwich panel



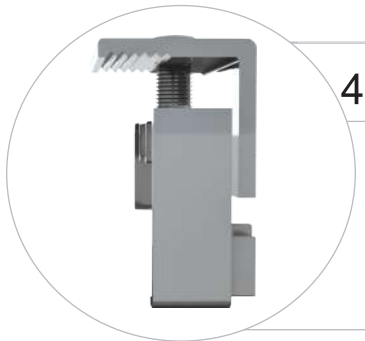
4900-PEGA-MBA-4337/16+4282/40

Universal aluminium solar mid clamp with sliding channels for solar panel fixing, adjustable for various panel thickness



4900-PEGA-MZI-4337/16+4282/40

Black universal aluminium solar mid clamp with sliding channels for solar panel fixing, adjustable for various panel thickness



4900-PEGA-MBA-4337/16+4281/40

Universal aluminium solar end clamp with sliding channels for solar panel fixing, adjustable for various panel thickness



4900-PEGA-MZI-4337/16+4281/40

Black universal aluminium solar end clamp with sliding channels for solar panel fixing, adjustable for various panel thickness

Technical additional information

- ◆ System of aluminium and profiles: For East-West system
- ◆ Raw material: Primary aluminium alloy 6060/6063-**Provided in: Mill finished, natural anodized and black anodized surface**
- ◆ Fixing type: Mounting with screws on the trapezoidal sheet or sandwich panel

Our activity, services and products are certified for:

- ✓ Design, production and trade of aluminium shapes and accessories for civil and industrial applications. ventilated facades systems, handrails, shutters, fences, sunbreakers and components of interior and exterior furnishings systems
- ✓ Design, production and trade of aluminium structures for solar panels.
- ✓ Design, production and trade of precast aluminium structures for the construction of civil and industrial accommodation modules and relative assembly.

QUALANOD LICENCE FOR ARCHITECTURE ANODISING

PESPA ALUMIN is authorized to use the quality sign, according to the regulations for the use of the quality label for ARCHITECTURAL ANODIZING



QUALANOD LICENCE FOR INDUSTRIAL ANODISING

PESPA ALUMIN is authorized to use the quality sign, according to the regulations for the use of the quality label for INDUSTRIAL ANODIZING.



ISO 14001:2015 - ENVIRONMENTAL MANAGEMENT SYSTEM

Pespa Alumin has implemented and maintains an environmental system which fullfills the requirements of the standard in all the operative units.



ISO 45001:2018 - HEALTH AND SAFETY MANAGEMENT SYSTEM

Pespa Alumin has implemented and maintains in compliance with the standard for its activity.



ISO 9001:2015 - QUALITY MANAGEMENT SYSTEM

Pespa Alumin is a certified organisation which fullfills the requirements of the standard.



CE EN 1090-1:2009+A1:2011






In compliance with Regulation (EU) No. 305/2011 of the European Parliament this certificate applies to the construction product: Structural components and kits for aluminium structures



STANDARD EN 1090-1 / EN 1090-3 CERTIFICATE: WELDED ALUMINIUM COMPONENTS FOR STRUCTURAL WORKS
 Standard – technical requirements - EN 1090-1 / EN 1090-3 Execution class(es) - EXC1; EXC2; EXC3; EXC4 Method(s) CE marking – 2; 3a; 3b Welding process(es) - 131; 141 EN ISO 4063 Parent material(s) - Groups: 23.1 ISO/TR 15608



PESP LUMIN

-  sales.pespa@pespagroup.com
-  Website: www.pespagroup.com
-  Address: Lagjia 14, Shkozet Durrës, Albania
-  Pespa Alumin  Pespa Alumin