

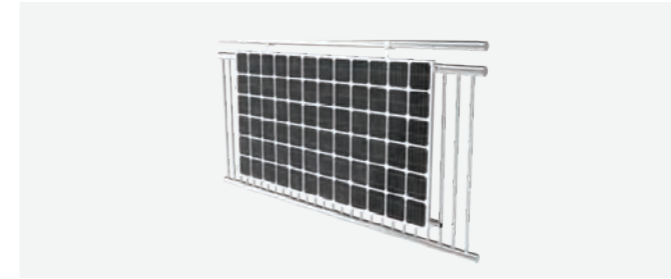
Shinson[®]
Technology Beyond Limits



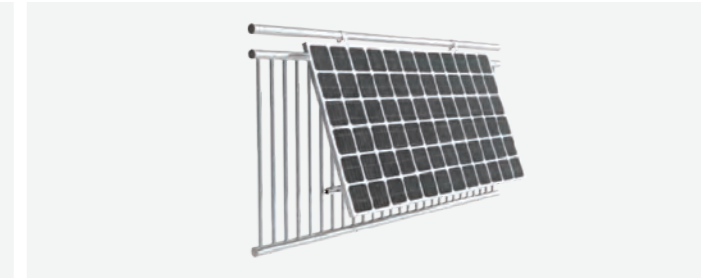
S.fix series 480W All Black Plug-Play PV Modules

- Pre-Mounted brackets for easy and fast installation.
- Module Angle adjustable from 0-30°.
- Flexible installation application for flat roof or balcony system.
- Anti-Corrosion aluminum materials with more reliability.
- Compatible for both ballast or screw fixture.
- All-In-One packaging for easy & safe delivery.

Application scenarios I

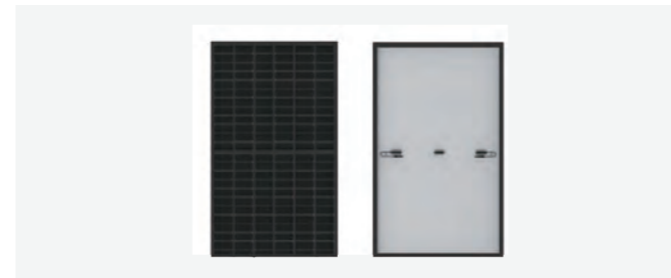


Fixed on balcony with 0°



Fixed on balcony with adjustable tilt
10°-30°

Standard Components



Solar PV Panel



Solar Bracket



Stainless fasten loop



Fixing Hook

Optional Components



Micro Inverter



Power Meter



AC Extension Cable



IP67 Waterproof Socket



Data transfer units

Application Scenario I

Balcony Solar System

- Multiple Fixture method, can be easily installed on walls and balcony.
- Pre-mounted brackets for easier and faster installation.
- Plug-Play design for DIY conception.
- Highly anti-corrosion materials for long lifespan and reliability.





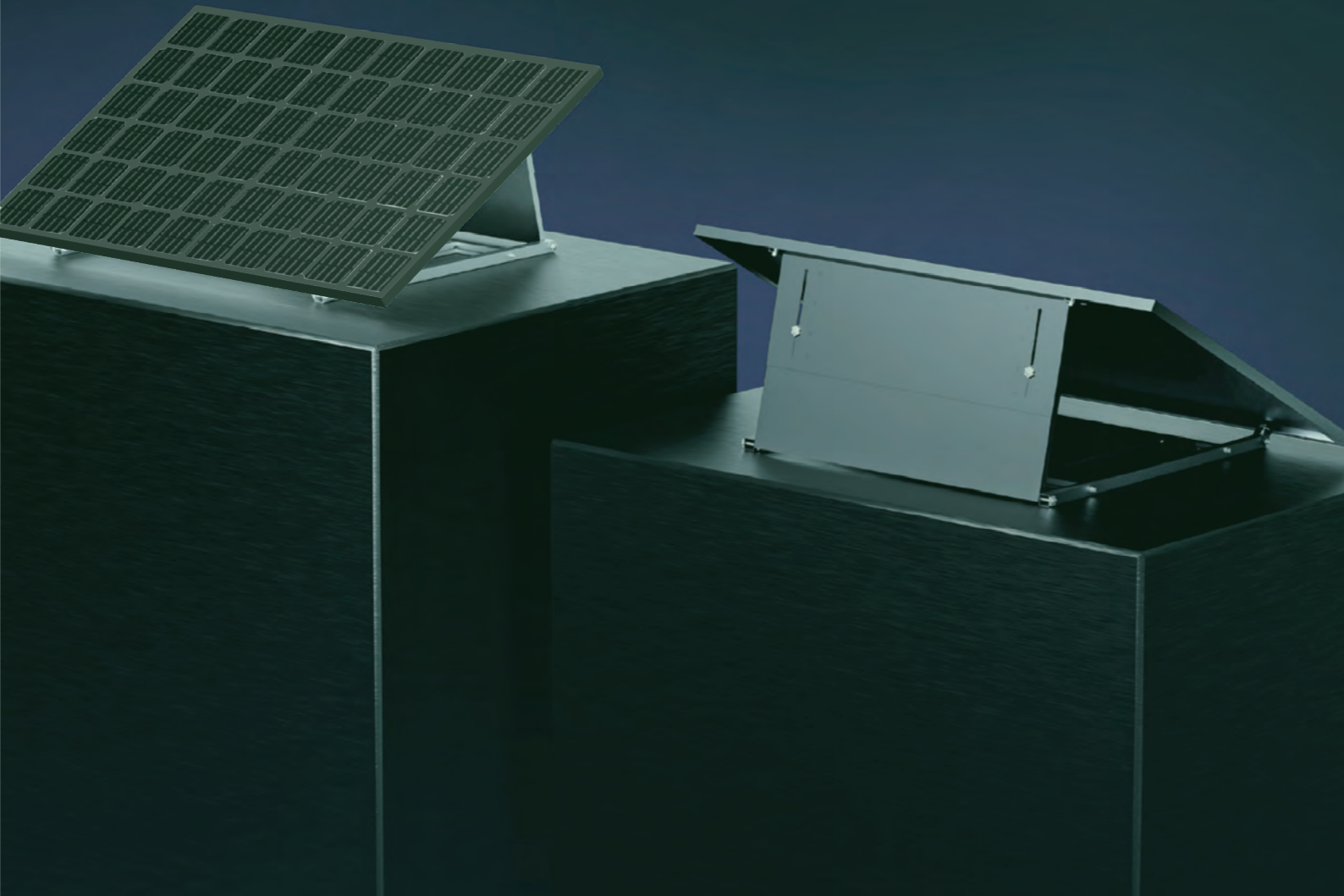
Garden



Flat Rooftop



Platform

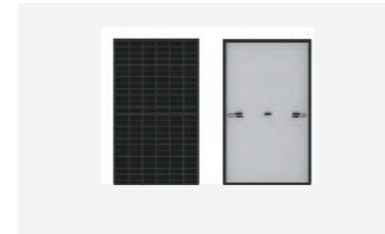


Application Scenario II

Flat surface installation

- Flexible fixture system, can be installed with ballast or screw fixture.
- Pre-mounted brackets for easier and faster installation.
- Plug-Play design for DIY conception.
- Wind&Snow load tested for higher reliability.

Standard Components



Solar PV Panel



Solar Bracket



Ballast plate

Optional Components



Micro Inverter



M8*5cm Fix Screw

Parameters

| Solar PV Panel |
|--|
| Power: 480 W |
| Module efficiency: 22.24% |
| Current at maximum power: 13.57A |
| Glass: 3.2mm, Anti-Reflection Coating, High Transmission, Low Iron, Tempered Glass |
| Frame: Anodized aluminum alloy frame |
| Dimension: 1903x1134x30 mm |
| Weight: 24.2 kg |

| Micro Inverter |
|--|
| Recommended module power: 320 to 540 + W |
| Maximum Input current: 12.5 A |
| Rated output power: 400 VA |
| Rated output current: 1.82 / 1.74 / 1.67 A |
| Output voltage/range: 220 ± 10 / 180 - 275 V |
| Dimensions: 182 × 164 × 30 mm |
| Weight: 1.75 kg |

| AC Extension Cable |
|--|
| Length of Cable: 2 / 3 / 5 / 10 m optional |
| Rated Voltage: AC 230 V |
| Certificate: VDE, CE |

| General Parameter |
|--|
| Environment protection rating: IP67 |
| Operating ambient temperature range: - 40 to 60 °C |
| Relative humidity: 0 - 100 % |