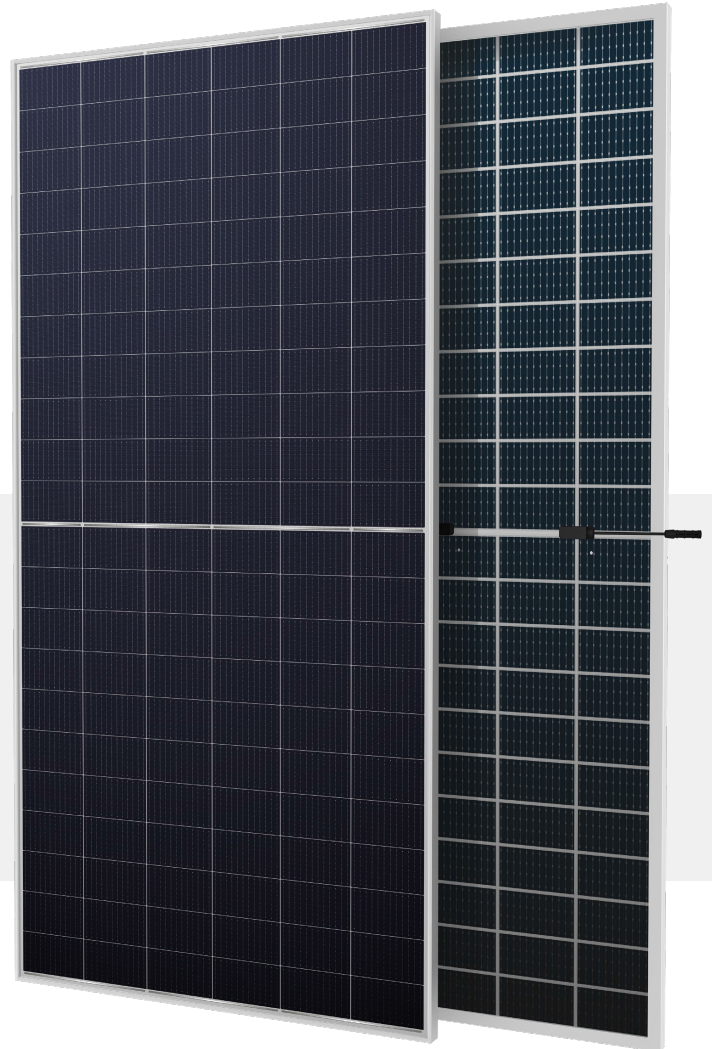


## BIFACIAL MODULE WITH DUAL GLASS

# RS9-680~700HBG-E1

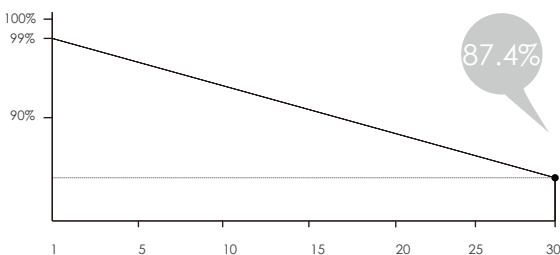
HJT-Type /Positive power tolerance of 0~+3%/Max module efficiency 22.53%

- Advanced 210HJT cell and 24BB module technology leads to higher efficiency;
- N-type solar cell has no LID naturally, can increase power generation
  - Excellent cell color control ·Non destructive cutting ·Thinner wafer
- Excellent power generation performance
  - Excellent IAM and Weak light response ·Low temperature ratings
  - 0.40% linear Power decline
- Flexible for system deployment
  - Perfect size and low weight ·Diverse installation solutions. ·Leads to avoid fire
- Ultra-hydrophilic self-cleaning coating techniques

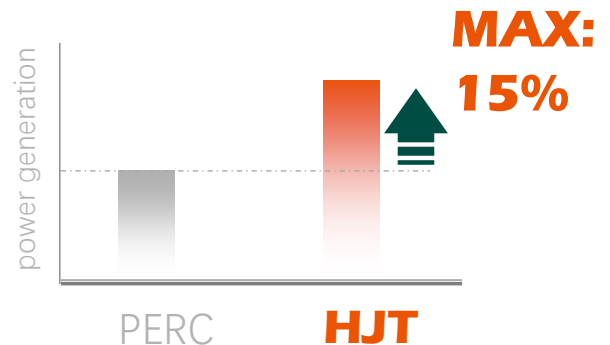


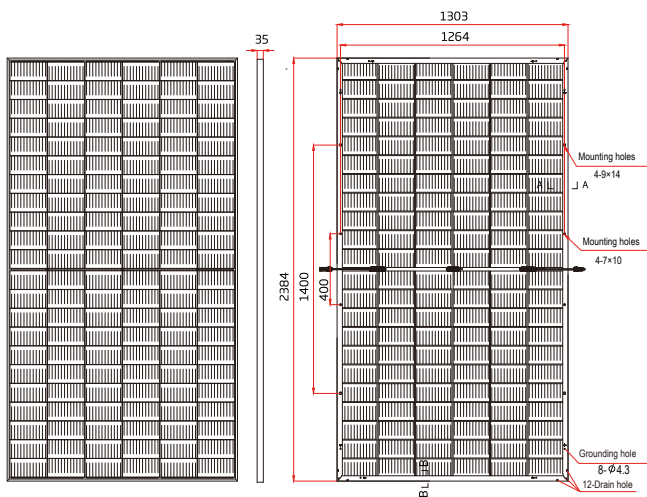
Complete System  
and IEC Product Certification

IEC 61215(2016), IEC 61730(2016) ISO9001:  
2015:Quality Management System ISO14001:  
2015:Environment Management System  
ISO45001:2018:Occupational Health  
and Safety Management System



30-Year excess linear power output warranty

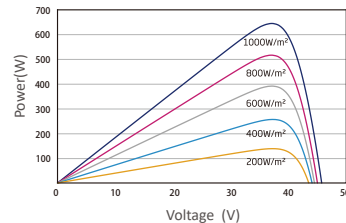
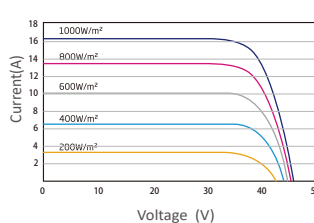




Drawing Only for Reference

# RS9-680~700HBG-E1

BIFACIAL MODULE WITH DUAL GLASS



Electrical Characteristics STC	RS9-680HBG-E1	RS9-685HBG-E1	RS9-690HBG-E1	RS9-695HBG-E1	RS9-700HBG-E1
Maximum Power (Pmax)	680W	685W	690W	695W	700W
Power Tolerance	0~+5W	0~+5W	0~+5W	0~+5W	0~+5W
Module Efficiency	21.89%	22.05%	22.21%	22.37%	22.53%
Maximum Power Current (Imp)	16.07A	16.11A	16.15A	16.19A	16.23A
Maximum Power Voltage (Vmp)	42.32V	42.53V	42.73V	42.93V	43.14V
Short Circuit Current (Isc)	17.11A	17.14A	17.17A	17.20A	17.24A
Open Circuit Voltage (Voc)	49.39V	49.59V	49.79V	49.99V	50.19V

Values at Standard Test Conditions STC(AM1.5, Irradiance 1000W/m<sup>2</sup>, Cell Temperature 25°C)

Electrical Characteristics NOCT	RS9-680HBG-E1	RS9-685HBG-E1	RS9-690HBG-E1	RS9-695HBG-E1	RS9-700HBG-E1
Maximum Power (Pmax)	520W	524W	528W	532W	536W
Maximum Power Current (Imp)	12.84A	12.87A	12.90A	12.93A	12.96A
Maximum Power Voltage (Vmp)	40.50V	40.80V	41.00V	41.20V	41.40V
Short Circuit Current (Isc)	13.80A	13.83A	13.85A	13.88A	13.91A
Open Circuit Voltage (Voc)	47.40V	47.60V	47.80V	48.00V	48.20V

NOCT , Irradiance of 800W/m<sup>2</sup> AM1.5, Ambient Temperature 20 °C, wind Speed 1m/s.

## Mechanical Characteristics

Cell Type	Mono HJT-Type, 210x210(±1)mm, 132(6x22) Half-Cut cells
Glass	2mm+2mm, High Transmission, Low Iron, Tempered Glass
Frame	Anodized Aluminum Alloy
Junction Box	1P68 Rated, With Bypass Diodes
Dimension	2384×1303×35mm
Output Cable	4 mm2 (EU),300 mm,length can be customized
Weight	38.7kg
Installation Hole Location	See Drawing Above

## Characteristics

Temperature Coefficient of Voc	-0.22%/°C
Temperature Coefficient of Isc	+0.047%/°C
Temperature Coefficient of Pmax	-0.24%/°C
Nominal Operating Cell Temperature (NOCT)	43°C ± 2°C

Remark:Electrical data in this catalog do not refer to a single module and they are not part of the offer.They only serve for comparison among different module types.

## Packing Information

Container	40' HQ
Pallets per Container	18
Pieces per Container	558

## Maximum Ratings

Operating Temperature	-40°C~+85°C
Maximum System Voltage	1500VDC
Maximum Series Fuse Rating	35A



Note: Please read the safety and installation instructions before using this product  
 ©2022 Renesola Co.,Ltd. All rights reserved. subject to change without notice.  
 web: www.renesola-energy.com  
 Version number:RS-T9-083-A

