

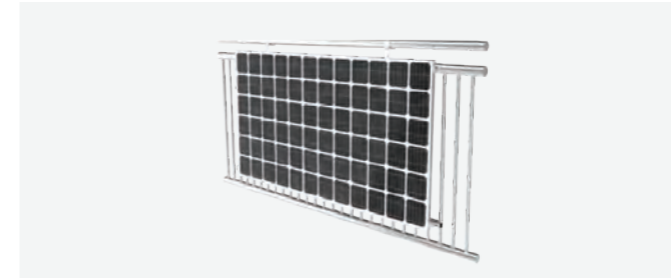
Shinson[®]
Technology Beyond Limits



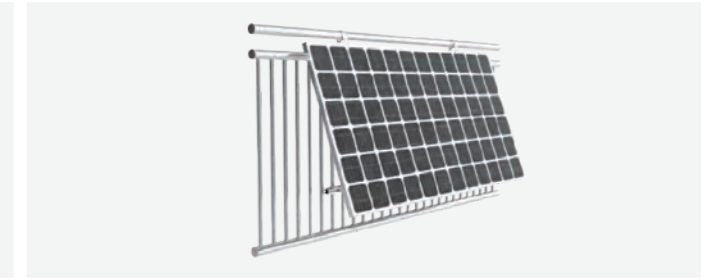
S.fix series 410W All Black Plug-Play PV Modules

- Pre-Mounted brackets for easy and fast installation.
- Module Angle adjustable from 0-30°.
- Flexible installation application for flat roof or balcony system.
- Anti-Corrosion aluminum materials with more reliability.
- Compatible for both ballast or screw fixture.
- All-In-One packaging for easy & safe delivery.

Application scenarios I

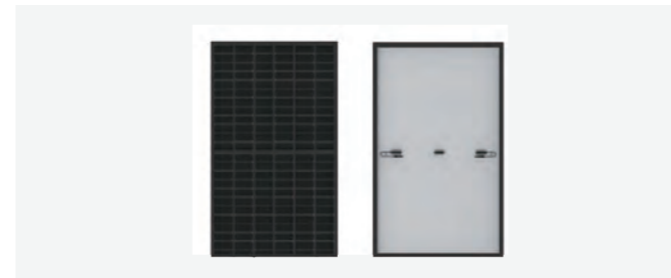


Fixed on balcony with 0°



Fixed on balcony with adjustable tilt
10°-30°

Standard Components



Solar PV Panel



Solar Bracket



Stainless fasten loop



Fixing Hook

Optional Components



Micro Inverter



Power Meter



AC Extension Cable



IP67 Waterproof Socket



Data transfer units

Application Scenario I

Balcony Solar System

- Multiple Fixture method, can be easily installed on walls and balcony.
- Pre-mounted brackets for easier and faster installation.
- Plug-Play design for DIY conception.
- Highly anti-corrosion materials for long lifespan and reliability.





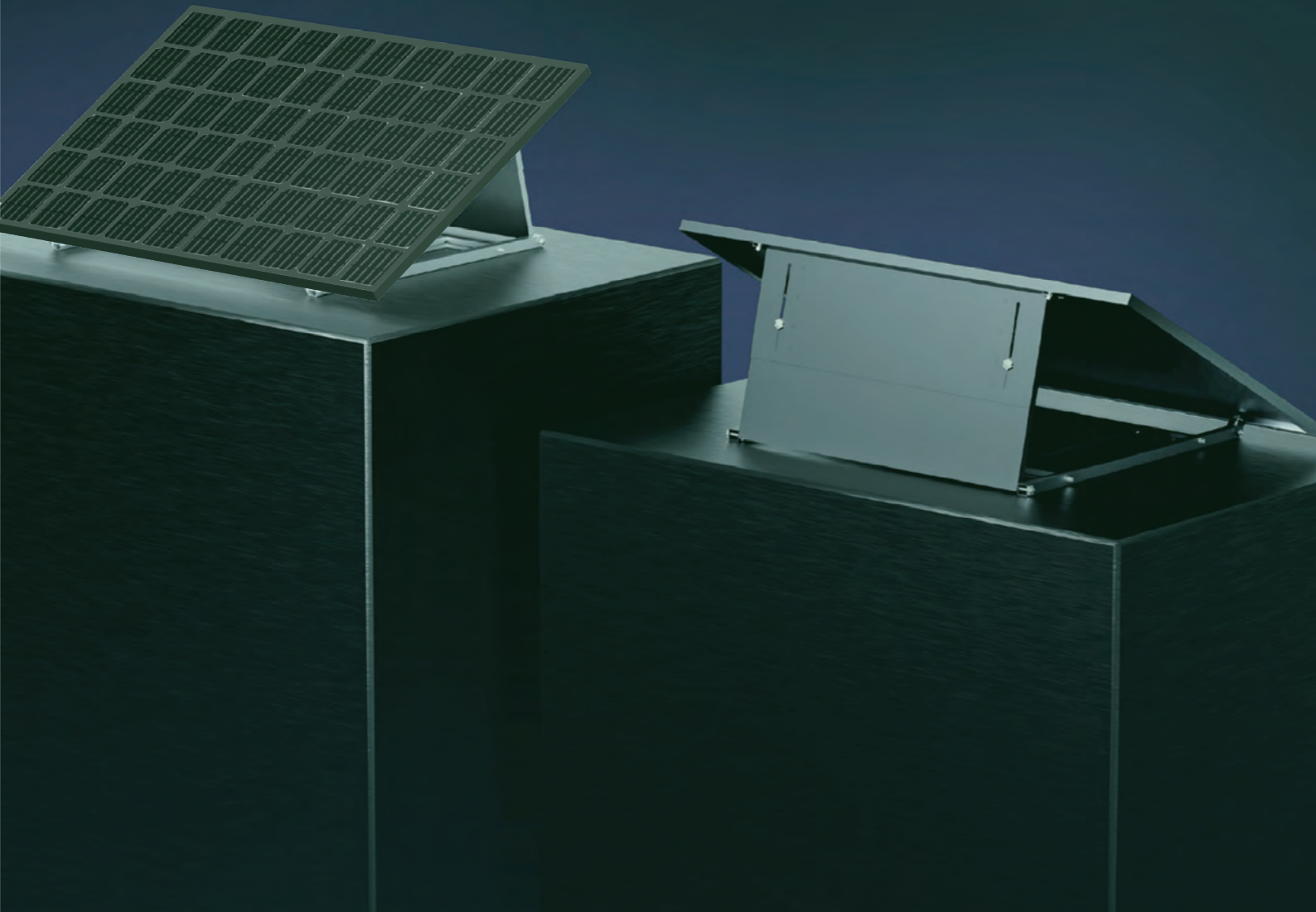
Garden



Flat Rooftop



Platform

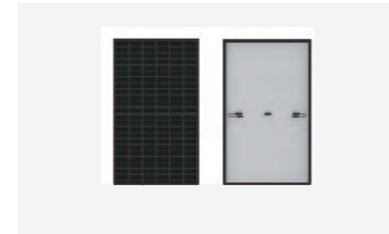


Application Scenario II

Flat surface installation

- Flexible fixture system, can be installed with ballast or screw fixture.
- Pre-mounted brackets for easier and faster installation.
- Plug-Play design for DIY conception.
- Wind&Snow load tested for higher reliability.

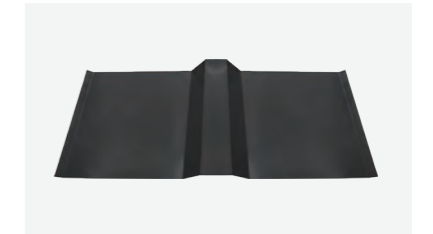
Standard Components



Solar PV Panel



Solar Bracket



Ballast plate

Optional Components



Micro Inverter



M8*5cm Fix Screw

Parameters

Solar PV Panel

Power:	410 W
Module efficiency:	21%
Current at maximum power:	13.12A
Glass:	Single glass, 3.2mm coated tempered glass
Frame:	Anodized aluminum alloy frame
Dimension:	1722 × 1134 × 30 mm
Weight:	20.8 kg

Micro Inverter

Recommended module power:	320 to 540 + W
Maximum Input current:	12.5 A
Rated output power:	400 VA
Rated output current:	1.82 /1.74/ 1.67 A
Output voltage/range:	220 ± 10 / 180 - 275 V
Dimensions:	182 × 164 × 30 mm
Weight:	1.75 kg

AC Extension Cable

Length of Cable:	2 / 3 / 5 / 10 m optional
Rated Voltage:	AC 230 V
Certificate:	VDE, CE

General Parameter

Environment protection rating:	IP67
Operating ambient temperature range:	- 40 to 60 °C
Relative humidity:	0 - 100 %