

# JS-PERC SERIES

Superior  
performance

**405-420W**

## ● **QUALITY SYSTEM**

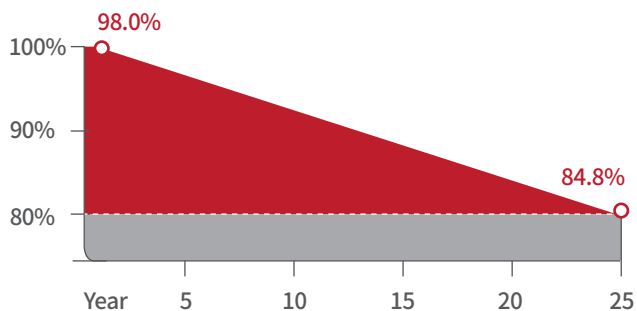
ISO9001 / ISO14001 / ISO45001

## ● **PRODUCT CERTIFICATION**



## ● **WARRANTY**

JS Solar's performance Warranty



## ● **PERC MODULE ADVANTAGE**



Less mismatch to get more power



Less power loss by minimizing the shading impact



Competitive low light performance



3 times EL test to ensure best quality



Ideal choice for utility and commercial scale projects by reduced BoS and improved ROI



Sand, acid, salt and hail stones test  
2400 Pa wind load and 5400 Pa snow load  
Anti-PID

## Electrical Characteristics

Module Type	JS405M108		JS410M108		JS415M108		JS420M108	
	STC	NOCT	STC	NOCT	STC	NOCT	STC	NOCT
Maximum Power at STC (Pmp)	405	300	410	304	415	308	420	312
Open Circuit Voltage (Voc)	37.24	34.06	37.44	34.07	37.64	34.08	37.84	34.09
Short Circuit Current (Isc)	13.69	10.08	13.75	10.89	13.81	10.97	13.87	11.05
Maximum Power Voltage (Vmp)	30.97	28.08	31.08	28.09	31.15	29.01	31.23	29.10
Maximum Power Current (Imp)	13.08	10.04	13.19	10.52	13.32	10.52	13.45	10.79
Module Efficiency at STC(%)	21.7		20.97		21.2		21.5	
Power Tolerance	(0, +4.99W)							
Maximum System Voltage	1500V DC							
Maximum Series Fuse Rating	25 A							

STC: Irradiance 1000 W/m<sup>2</sup> module temperature 25°C AM=1.5  
Power measurement tolerance: +/-3%

## Temperature Characteristics

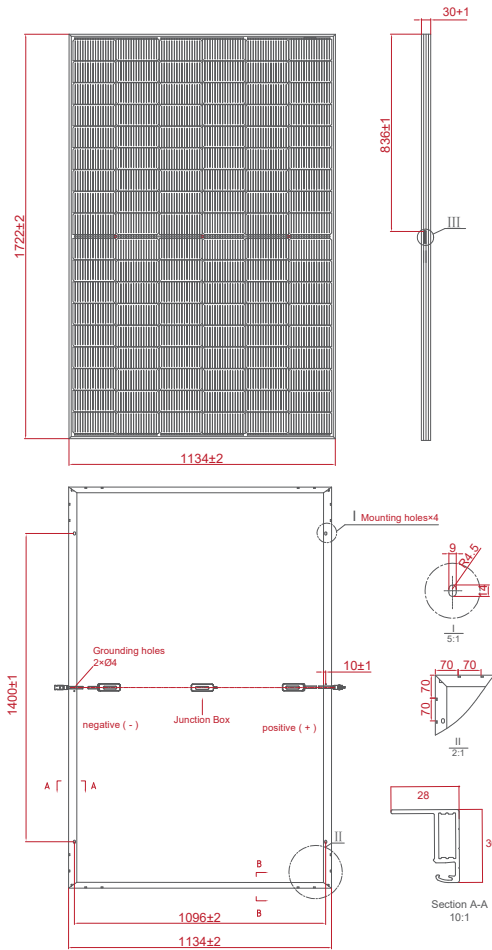
Pmax Temperature Coefficient	-0.30 %/°C
Voc Temperature Coefficient	-0.25 %/°C
Isc Temperature Coefficient	+0.046 %/°C
Operating Temperature	-40~+85 °C
Nominal Operating Cell Temperature(NOCT)	45±2 °C

## Mechanical Specifications

External Dimensions	1722 x 1134 x 30mm
Weight	19.0kg
Solar Cells	Perc 182 x 91mm (108 pcs)
Front Glass	3.2mm AR coating tempered glass, low iron
Frame	Anodized aluminium alloy
Junction Box	IP68, 3 diodes
Output Cables	4.0mm <sup>2</sup> , 250mm(+)/350mm(-) or Customized Length
Mechanical Load	Front side 5400Pa/ Rear side 2400Pa

## Packing Configuration

1722 x 1134 x 30mm		
Container	20'GP	40'HQ
Pieces per Pallet	36	36
Pallets per Container	6	26
Pieces per Container	216	936



## I-V Curve

