

Home Solar Battery Solution

PowerOcean

Innovation for Power Independence



PowerOcean

Innovation for Power Independence

The innovative 3-phase residential solar battery solution starting from 5kWh, expandable at all times

EcoFlow PowerOcean is a premium modular 3-phase residential home solar battery system, designed for PV new-build house owners who are looking for a smart and flexible power independence solution. You can begin your power self-sufficiency journey starting from 5kWh, and expand at your will at all times. Featuring CATL's LFP battery with an industry-leading 15-year warranty, PowerOcean offers enhanced safety and outstanding battery performance. With up to 10kW backup output, you will be prepared in case of any grid outage.



Garage



Outdoor



Basement

What makes PowerOcean special?

800V

800V high-voltage battery, 1 pack to start a 3-phase inverter.

45kWh

Easy battery expansion anytime, up to 45kWh capacity.

15-year

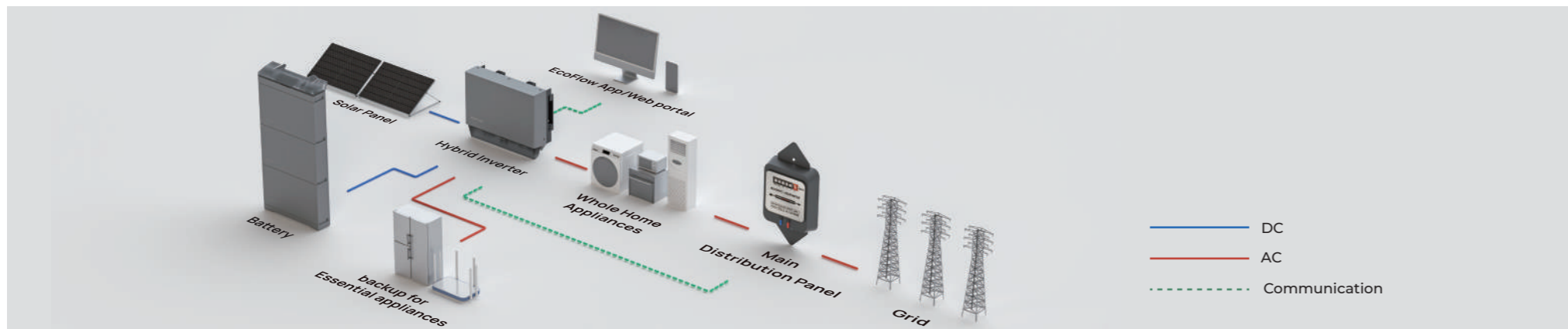
CATL LFP Battery with industry-leading 15-year warranty.

10kW

10kW 3-phase backup power.

IP65

Weather Proof: Battery Auto-heating and IP65.



PowerOcean LFP Battery

The innovative 800V high-voltage LFP battery with outstanding safety and performance

EcoFlow PowerOcean LFP Battery is a parallel connected high voltage battery system, compatible with our 3-phase hybrid inverter. You can flexibly start from only 1 battery of 5kWh, and expand at your will at all times. With CATL's LFP battery chemistry, active and passive safety measures, we provide outstanding battery reliability and performance.

5kWh each pack
expandable to up to 45kWh

6,000+ *
life cycles

15
years of warranty

CATL
LFP battery



*6,000+ life cycle till degradation to 70%.



800V high-voltage battery, 1 pack to start a 3-phase inverter

- There is a built-in DC-DC converter in each battery, allowing each pack to independently convert between 48V and 800V.
- 3-phase solar battery system can simply start with only one pack.



Enhanced Safety and Reliability

Parallel-connected batteries, with the integrated BMS and power converter

- Malfunction of one battery doesn't affect the others.
- TI automotive-grade BMS chip is integrated into every battery pack.
- Cloud BMS supported: cloud computing is used to smartly prevent risks and improve performance.

Active aerosol fire protection module in every pack

- Aerosol fire extinguisher is equipped in every pack to detect battery temperature, immediately activated when it's over 270 °C.

Weather Proof: Battery Auto-heating and IP65

- Each pack is equipped with auto-heating modules to work smoothly during winter.
- The entire system has IP65 protection.



Easy battery expansion at all times, up to 45kWh capacity

- The new battery is perfectly compatible with the old ones.
- The battery system can be expanded at any time up to 45kWh, allowing users to DIY for capacity expansion.

PowerOcean Hybrid Inverter

The 3-phase hybrid inverter with 10kW backup power

The EcoFlow PowerOcean Hybrid Inverter enables highly efficient solar energy usage and storage to achieve your home power independence. The 3-phase inverter is integrated with backup module, offering up to 10kW output to power almost every essential appliance in case of any grid outage.

10kW output power

Up to 10kW output power, getting all essential home appliances backed up at once, including washing machines, dish washers, oven, etc.

20ms auto-switch

Ultra-fast switch to power your essential appliances once blackout happens. You won't feel it until you know it.



Kitchen Appliances



Washing Machines



Home Office



Bypass circuit to secure stable power supply

If the inverter detects dysfunction, it will switch to the bypass mode, allowing grid power to flow through instead.

Multiple communication methods supported

Communicate via Bluetooth, Wi-Fi, Ethernet, and 4G.

Remotely scheduled OTA updates anytime

Without interrupting the power system.

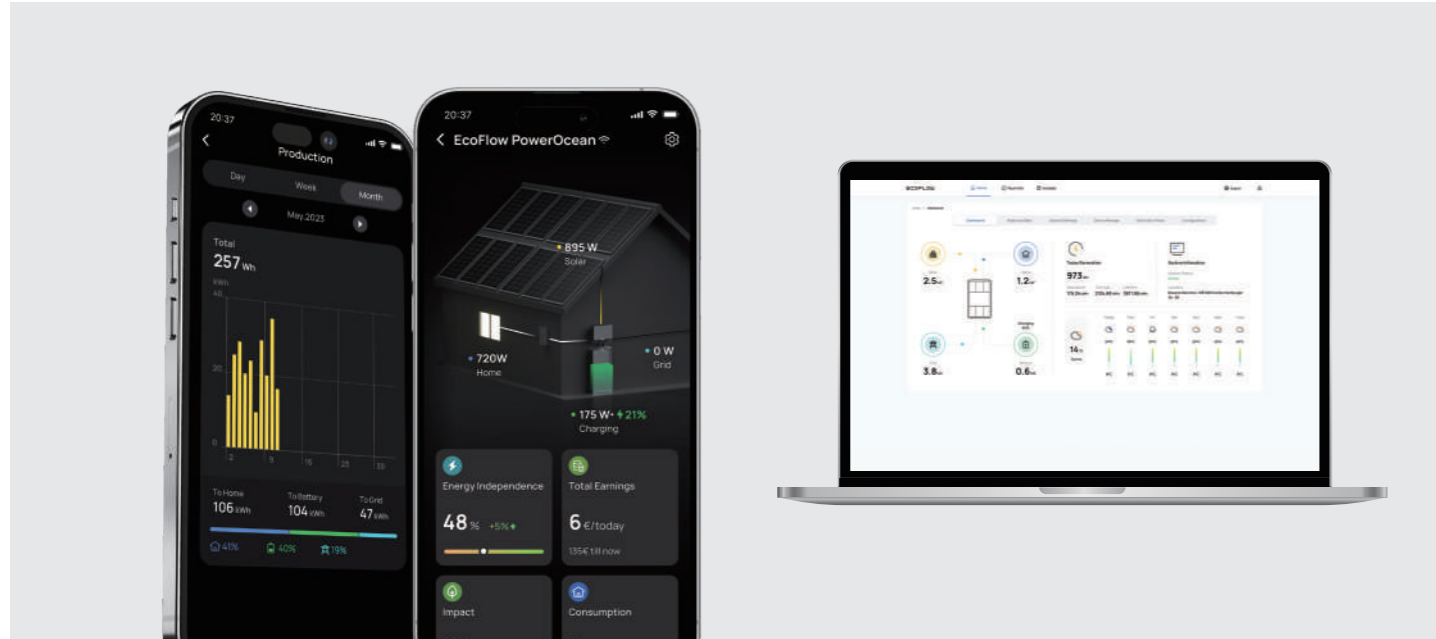
SG Ready supported: heating with solar power

For a heat pump with SG Ready (Smart Grid Ready) control input, the PowerOcean can distribute excess solar power for heating to further improve your home power independence.

Smart Energy Management System (EMS) visualized on EcoFlow APP and Web Portal

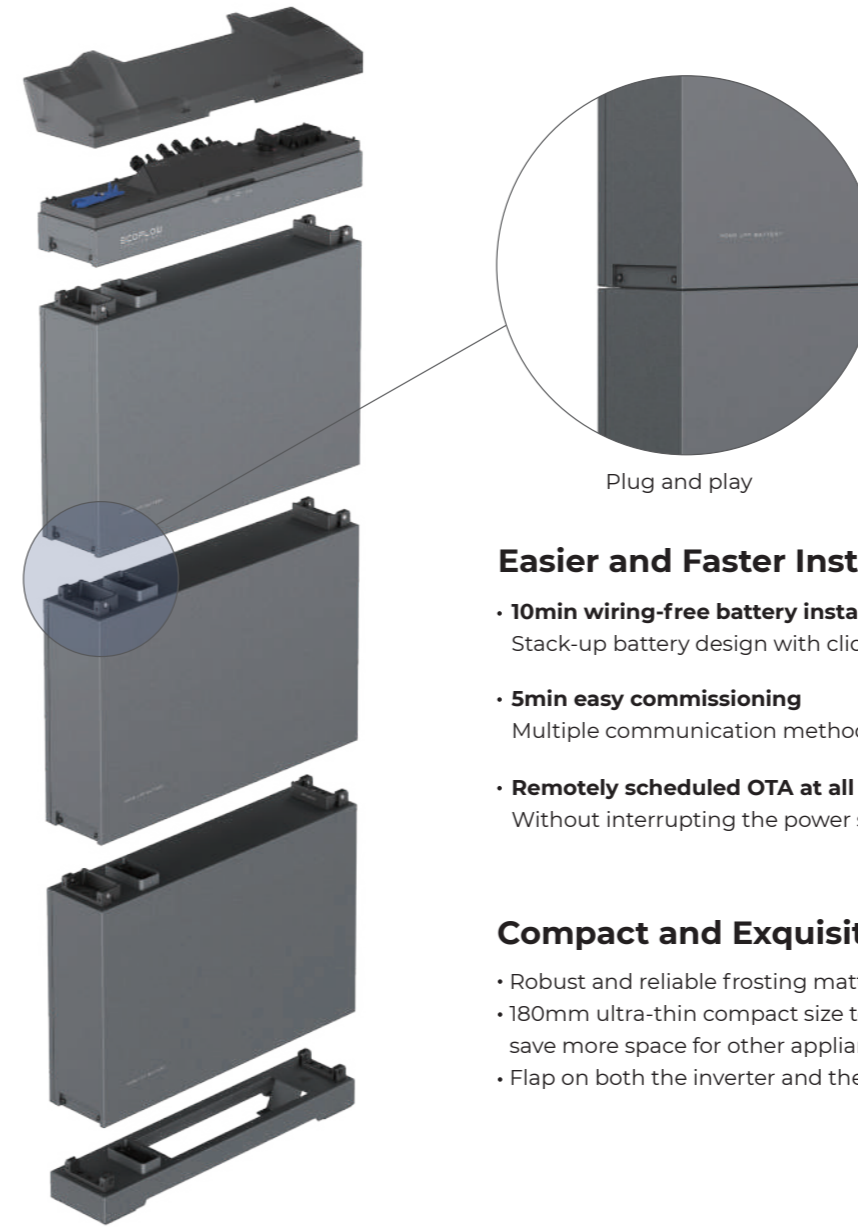
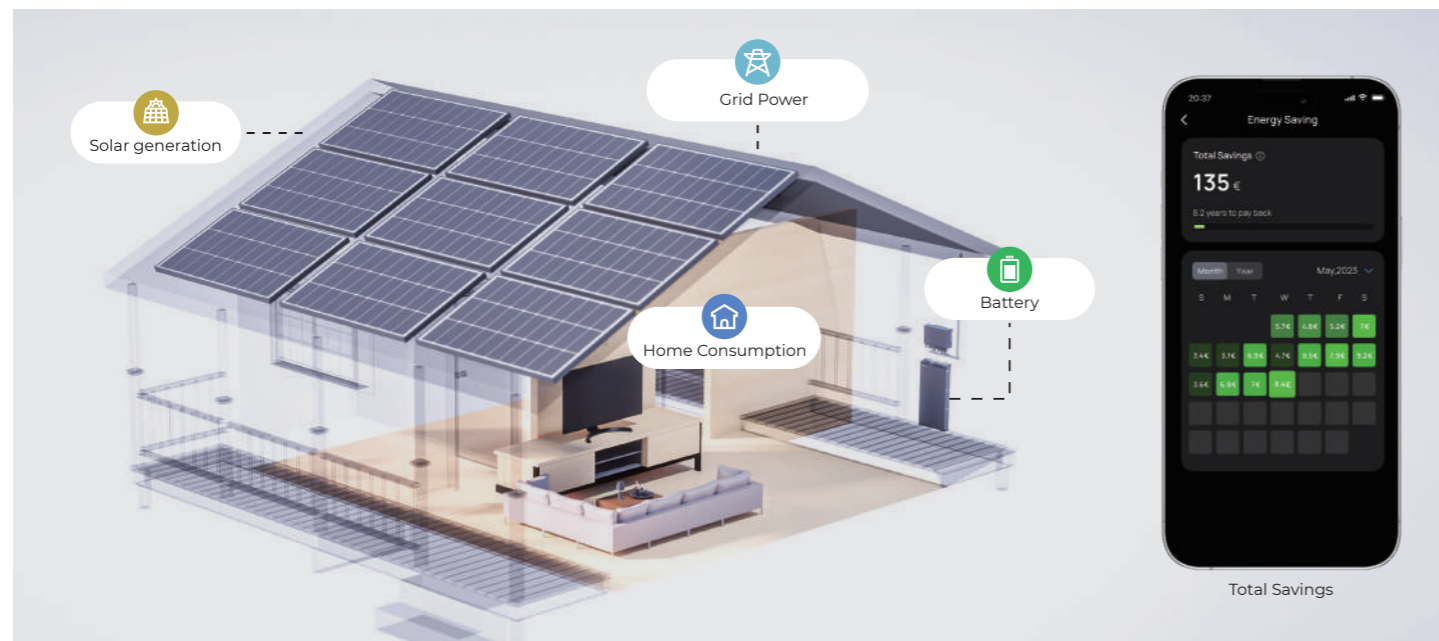
The EcoFlow App is used to monitor and control your home energy solution in real time, to optimize the generation, consumption, and storage of both solar and grid power to meet your self-sufficiency needs. Users can view the real-time energy data, including solar power input, charging and discharging power of battery, home energy consumption, self-sufficiency rate, energy savings, etc. In addition to EcoFlow PowerOcean, the EcoFlow APP can connect to all the other EcoFlow energy products.

EcoFlow Pro App and the Web Portal is a dedicated monitoring system to help installers perform quick commissioning, system monitoring, firmware upgrade, remote control and troubleshooting during the process of installing the PowerOcean solution.



Smart self-learning EMS to maximize your energy savings

- Learn from your energy consumption habits and real-time weather forecast, and intelligently optimize battery charging and discharging power, to maximize solar usage.
- Compliant with GDPR (General Data Protection Regulation)



Easier and Faster Installation

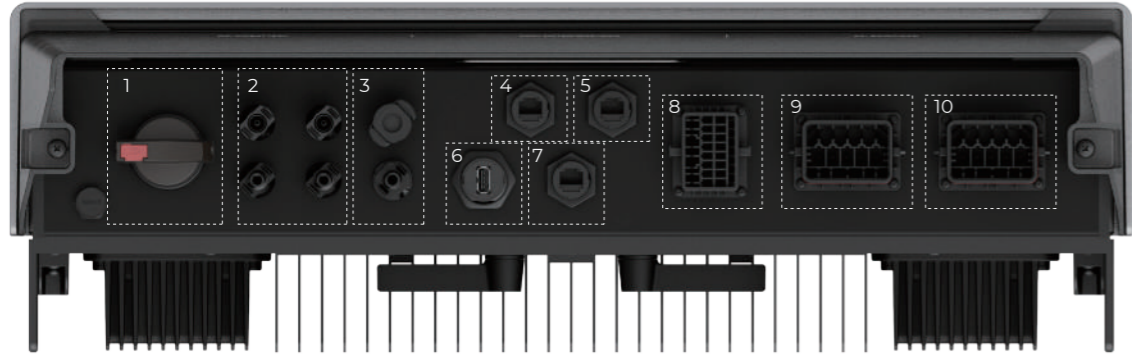
- **10min wiring-free battery installation**
Stack-up battery design with click-on battery terminals.
- **5min easy commissioning**
Multiple communication methods including Bluetooth, Wi-Fi, Ethernet and 4G.
- **Remotely scheduled OTA at all times**
Without interrupting the power system.

Compact and Exquisite Design

- Robust and reliable frosting matte metal material.
- 180mm ultra-thin compact size to neatly fit in the basement or garage, and save more space for other appliances.
- Flap on both the inverter and the junction box to hide cables.



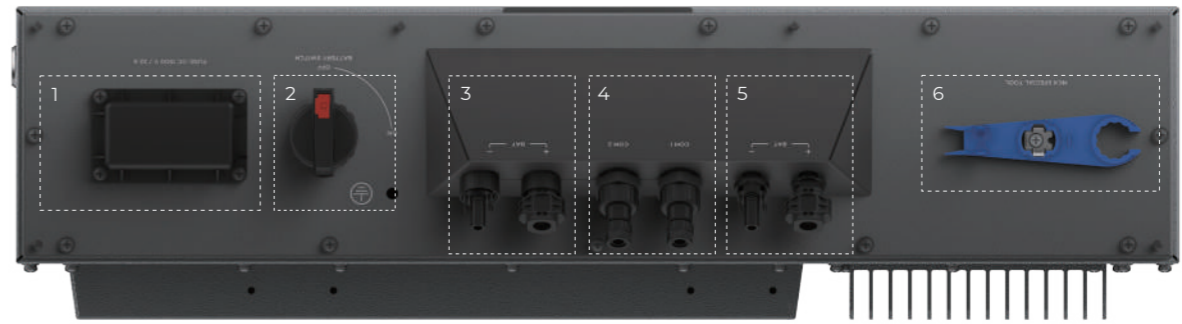
PowerOcean Hybrid Inverter



- 1. DC Switch
- 2. PV Port
- 3. Battery Port
- 4. Ethernet Port
- 5. Smart Meter Port
- 6. 4G Gateway
- 7. Battery Communication Port
- 8. Communication Port
- 9. Grid Port
- 10. Backup Load Port

	EF 6KTL-T1	EF 8KTL-T1	EF 10KTL-T1
Input (PV)			
Maximum PV power	10kW	12kW	14kW
Operating voltage range	160~1000V d.c.	160~1000V d.c.	160~1000V d.c.
Number of MPPTs	2	2	2
Input (Battery)			
Maximum charging power	6kW	8kW	10kW
Maximum discharging power	6kW	8kW	10kW
Output (On-grid)			
Grid connection	3L/N/PE	3L/N/PE	3L/N/PE
Rated output power	6kW	8kW	10kW
Maximum output current	9.1A	12.2A	15.2A
Output (Backup Load)			
Rated output power	6kW	8kW	10kW
Maximum output current	13.7A	18.2A	22.8A

PowerOcean LFP Battery



- 1. Fuse
- 2. DC Switch
- 3. Power Port
- 4. Communication Port
- 5. Power Port
- 6. MC-4 Tool

	Performance		
Number of battery packs	1	2	3
Battery module capacity	5kWh	10kWh	15kWh
Max. output power	3.3kW	6.6kW	9.9kW
Max. input power	2.5kW	5kW	7.5kW
General specification			
Dimension (W*D*H)	675.6*182.7*593.6mm	675.6*182.7*989.8mm	675.6*182.7*1386mm
Power module weight	54kg	108kg	162kg
Operating temperature	-20°C~50°C	-20°C~50°C	-20°C~50°C

Follow Us:

Facebook/Twitter/Instagram: @ecoflowtech

LinkedIn: @EcoFlow

Contact Us:

Web: eu.ecoflow.com

Email: sales.eu@ecoflow.com

Service: solutionservice.eu@ecoflow.com