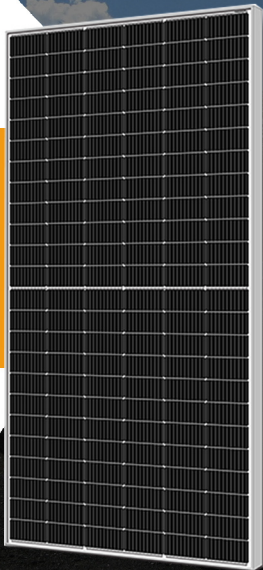




660-700W Half Cell



Model Type	MY-M12/144-660	MY-M12/144-670	MY-M12/144-680	MY-M12/144-690	MY-M12/144-700
Rated Maximum Power at STC	660W	670W	680W	690W	700W
Maximum Power Voltage (Vmp)	38.38V	38.68V	38.98V	39.28V	39.58V
Maximum Power Current (Imp)	17.20A	17.33A	17.45A	17.57A	17.69A
Open Circuit Voltage (Voc)	45.55V	45.85V	46.15V	46.45V	46.75V
Short Circuit Current (Isc)	18.45A	18.54A	18.66A	18.79A	18.92A
Module Efficiency	21.1%	21.4%	21.7%	22.0%	22.3%

Working Conditions&Working Conditions

Operating Temperature	-40°C~+85°C
Maximum System Voltage	DC 1000V(IEC) / 1500V(IEC)
Maximum Series Fuse	25A
Power Tolerance	0~+5W
Temperature Coefficient of Pmax	-0.35%/°C
Temperature Coefficient of Voc	-0.29%/°C
Temperature Coefficient of Isc	+0.048%/°C

STC(Standard Testing Conditions): Irradiance 1000W/m², Cell Temperature 25 °C, Spectra at AM1.5

NOCT (Nominal Operating Cell Temperature): Irradiance 800W/m², Ambient Temperature 20 °C, Spectra at AM1.5, Wind at 1 m/S