

孚龙光伏
FLOATSOLA
Powering the floating solar



Floatsola (Xiamen) Co.,Ltd

Add: Room 405A, Hongye Building, No.11 Huoju East Road, Huli District, Xiamen, Fujian, China

E-mail: floatsola@gmail.com

Website: www.floatsola.com

Solar Mounting System Solution Provider & Manufacturer

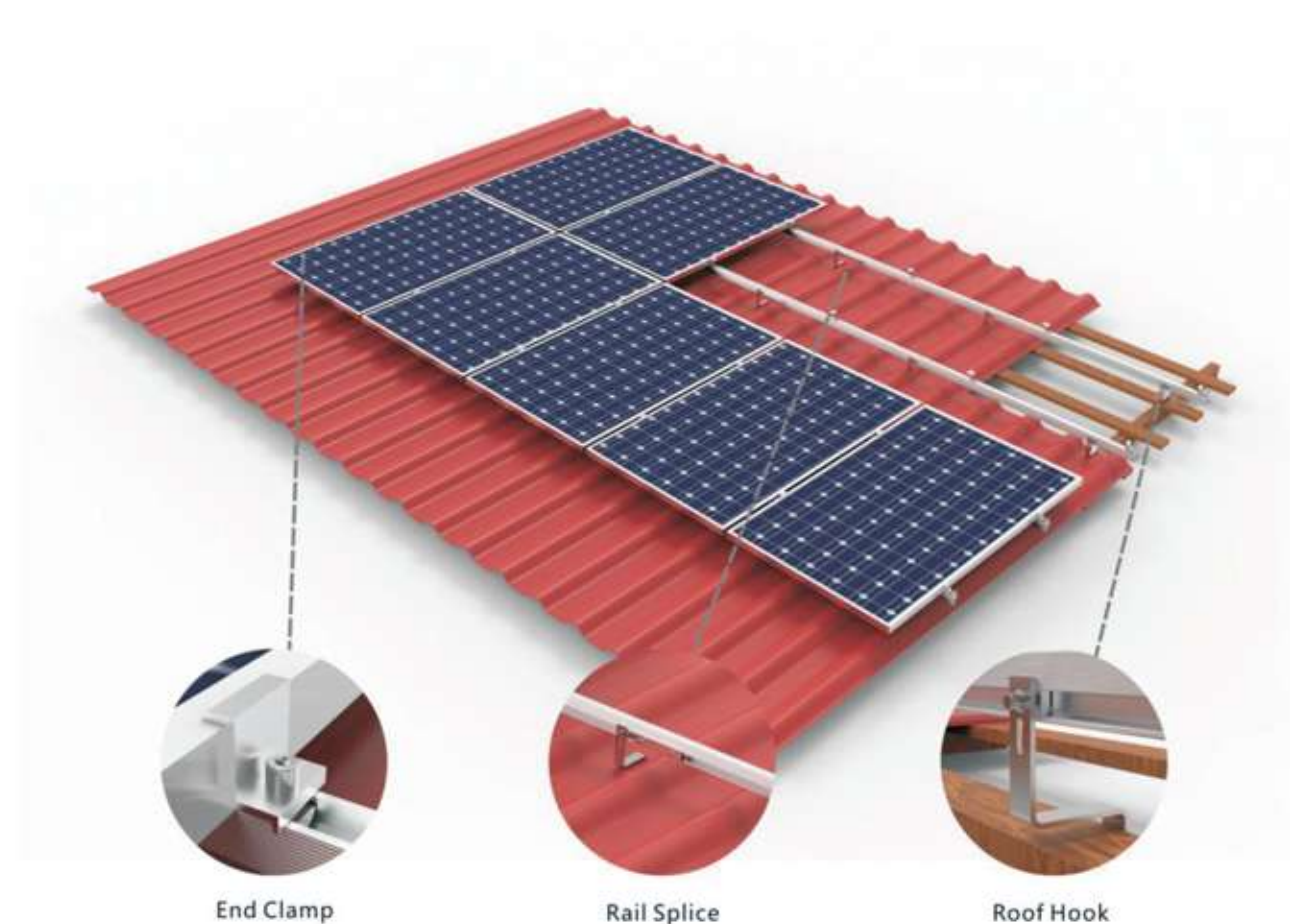
Ground Mounting System Solution

Roof Mounting System Solution

Ground Screw



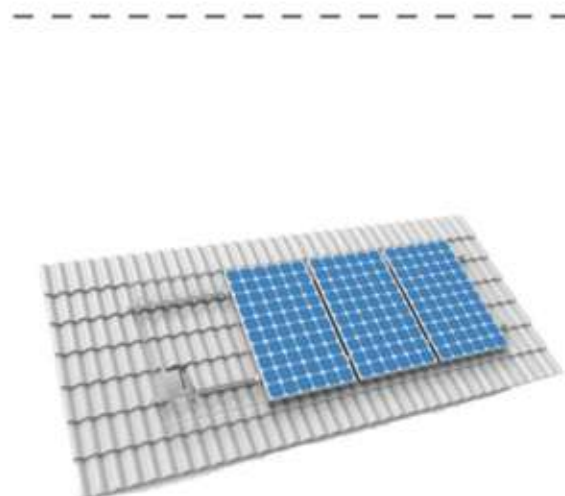
Tile Roof Mounting System



Features

Tile roof mounting system offers perfection solution for installation on tile roofing, is designed for easy installing, high load capacity, and ensuring durability under extreme weather. It helps the system operate safely and effectively.

Components



Technical Parameter	
Application	Ground
Wind Load	≤60 m/s
Snow Load	≤1.6 KN/m ²
Module Orientation	Landscape/Portrait
Standards	ASCE_7-10, JIS C8955: 2017, EN1090, International Building Code IBC 2009
Material	SUS304&AL6005-T5(Anodized)



A Roof Hook Kit
Roof Hook
SUS304/Q345 optional
Rail Ingot Kit
AL6005-T5&SUS304
Wood Screw
Q235/SUS304/
SUS410 optional



Installation
Roof Hook Kit
with Rail 30-40



B Middle Clamp Kit
30/35/40mm
AL6005-T5&SUS304
Black optional



D Rail
26-52/26-46/30-40
AL6005-T5
Length can be
customized



C End Clamp Kit
30/35/40mm
AL6005-T5&SUS304
Black optional



E Rail Splice Kit
AL6005-T5&SUS304

Tile Roof Components



Item No.
Description

Model 1
SUS304/Q345
Rail Ingot Kit/
Wood Screw
optional



Item No.
Description

Model 2
SUS304/Q345
Rail Ingot Kit/
Wood Screw
optional



Item No.
Description

Model 3
SUS304/Q345
Rail Ingot Kit/
Wood Screw
optional



Item No.
Description

Model 4
SUS304/Q345
Rail Ingot Kit/
Wood Screw
optional



Item No.
Description

Model 5
SUS304/Q345
Rail Ingot Kit/
Wood Screw
optional



Item No.
Description

Model 6
SUS304/Q345
Rail Ingot Kit/
Wood Screw
optional



Item No.
Description

Model 7
SUS304/Q345
Rail Ingot Kit/
Wood Screw
optional



Item No.
Description

Model 8
SUS304/Q345
Rail Ingot Kit/
Wood Screw
optional



Item No.
Description

Model 9
SUS304/Q345
Rail Ingot Kit/
Wood Screw
optional



Item No.
Description

Model 10
SUS304/Q345
Rail Ingot Kit/
Wood Screw
optional

Roof Components



Item No.
Description

AST-81
Rail 26-52



Item No.
Description

AST-80
Rail 26-46



Item No.
Description

AST-28
Rail 30-40



Item No.
Description

AST-082
Rail Splice,
connector for
AST-080/081



Item No.
Description

AST-029
Rail Splice,
connector for
AST-028



Item No.
Description

AST-023
Middle Clamp



Item No.
Description

AST-020/21/46
End Clamp



Item No.
Description

AST-023-Black
Middle Clamp
Black

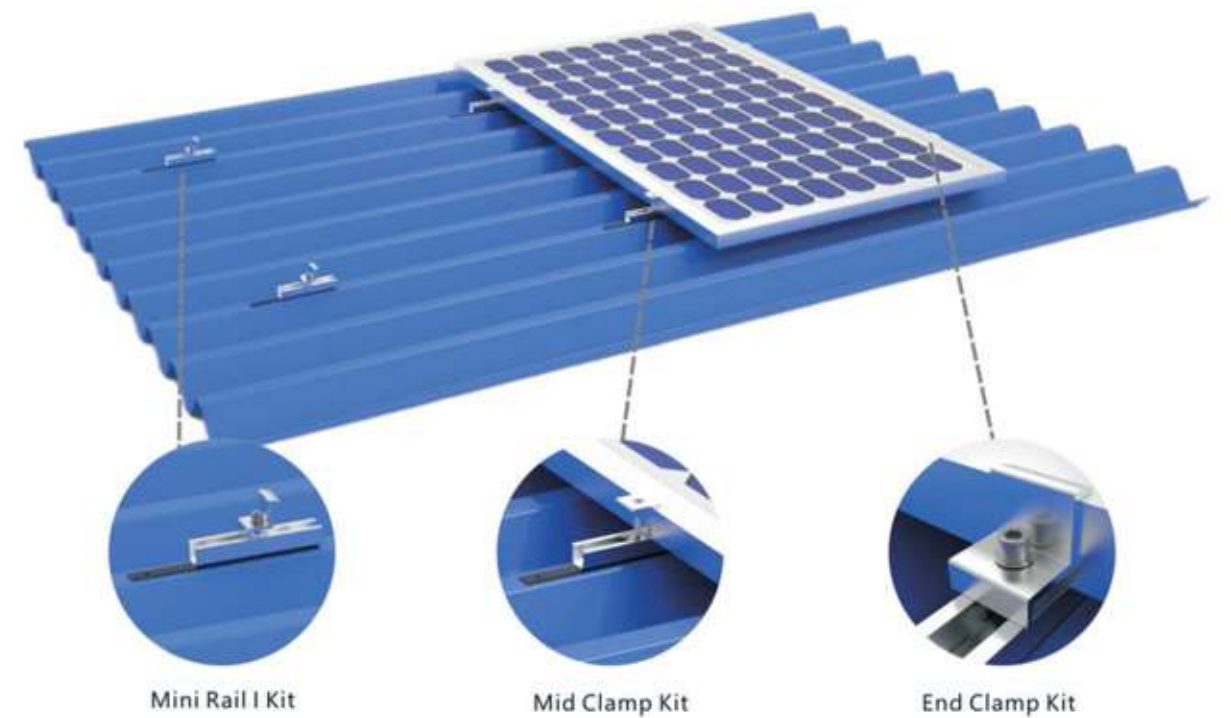


Item No.
Description

AST-020/21/46-Black
End Clamp Black



Metal Roof Mounting System



Mini Rail I Kit

Mid Clamp Kit

End Clamp Kit

Features

Metal roof mounting system provides a simple and cost-effective solution for commercial and residential roof solar systems. As a cost-effective mounting solution, the metal roof mounting kit greatly reduces overall project cost.

Components



A1

Mini Rail Kit
Mini Rail I/II/III optional
AL6005-T5&EPDM
Length can be customized
Screws
SUS304/SUS410 optional



B

Middle Clamp Kit
30/35/40mm
AL6005-T5&SUS304
Black optional



A2

Mini Rail II
AL6005-T5&EPDM
Length can be customized
Screws
SUS304/SUS410 optional



C

End Clamp Kit
30/35/40mm
AL6005-T5&SUS304
Black optional

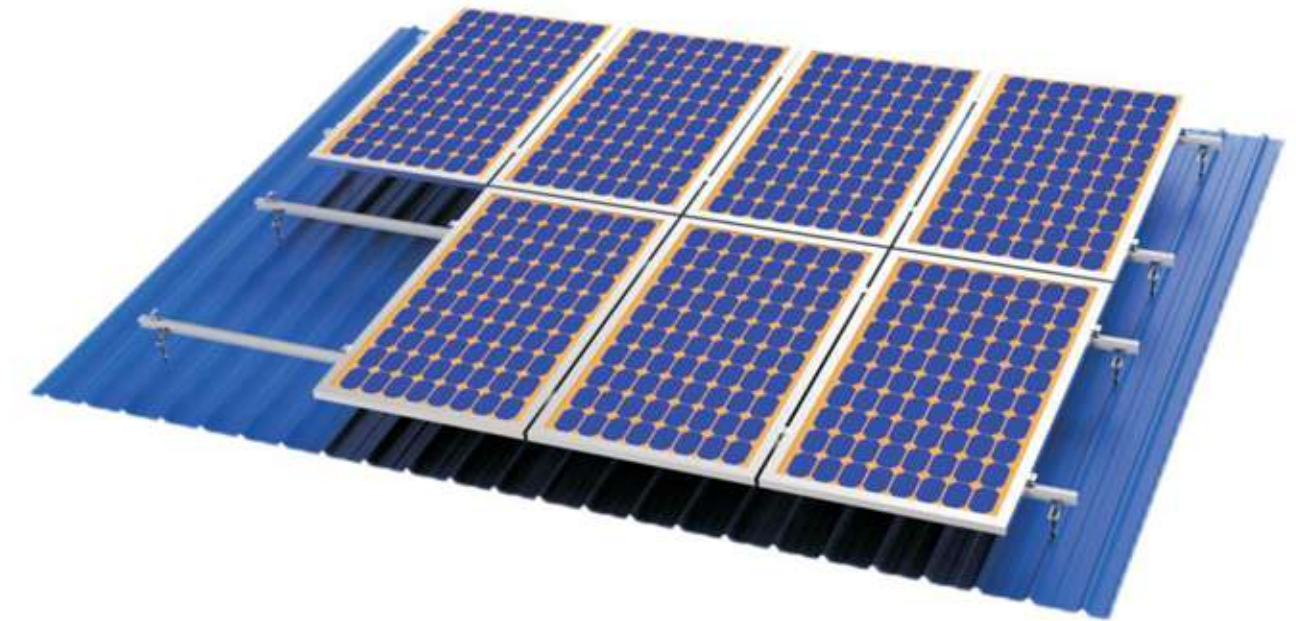
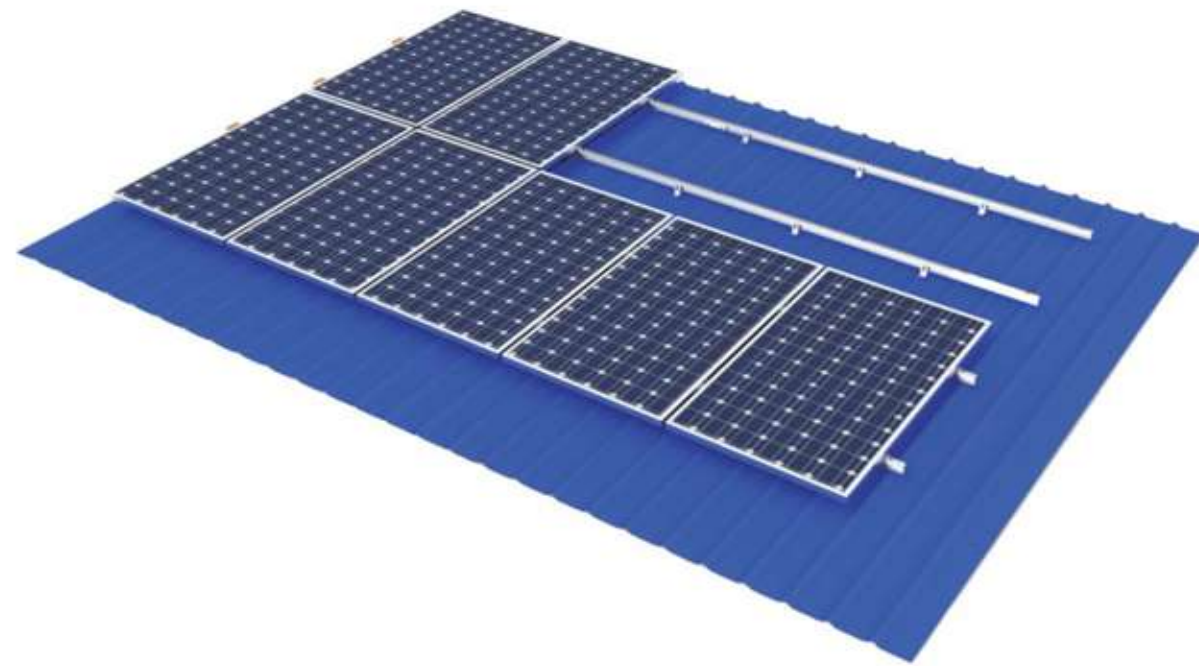


A3

Mini Rail III
AL6005-T5&EPDM
Length can be customized
Screws
SUS304/SUS410 optional



Technical Parameter	
Application	Ground
Wind Load	≤60 m/s
Snow Load	≤1.6 KN/m ²
Module Orientation	Landscape/Portrait
Standards	ASCE_7-10, JIS C8955: 2017, EN1090, International Building Code IBC 2009
Material	AL6005-T5(Anodized)&SUS304

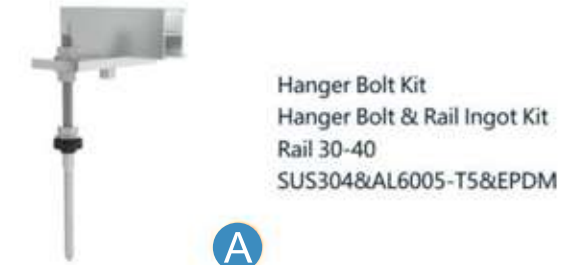
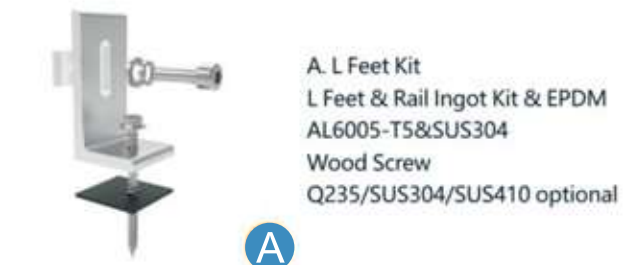


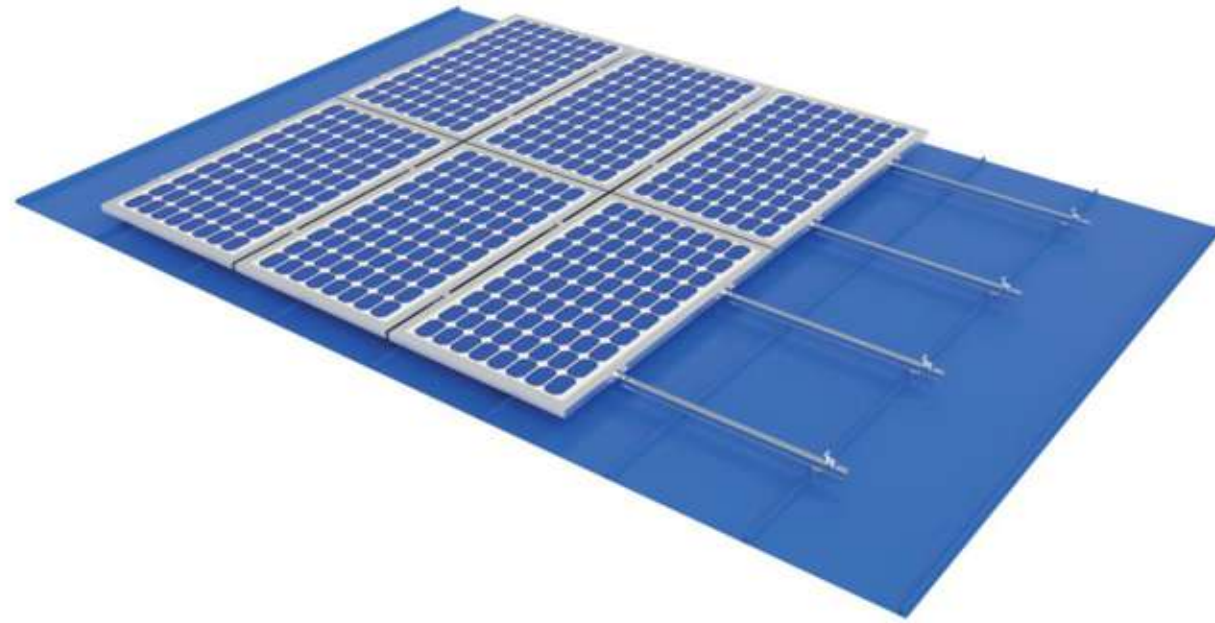
Components

Components

L Feet Roof Mounting System

Hanger Bolt Roof Mounting System





Components

Kliplok Metal Roof Mounting System



A

Kliplok Kit/ Roof Clamp Kit
Rail Ingot Kit
AL6005-T5&SUS304



D

Rail
30-40
AL6005-T5
Length can be customized



B

Middle Clamp Kit
30/35/40mm
AL6005-T5&SUS304
Black optional



E

Rail Splice Kit
AL6005-T5&SUS304



C

End Clamp Kit
30/35/40mm
AL6005-T5&SUS304
Black optional



Item No. | KL 01
Description | AL6005-T5&SUS304&EPDM
Rail Clamp Kit optional



Item No. | KL 02
Description | AL6005-T5&SUS304
Rail Ingot Kit optional



Item No. | KL 03
Description | AL6005-T5&SUS304
Rail Ingot Kit optional



Item No. | KL 04
Description | AL6005-T5&SUS304
Rail Ingot Kit optional



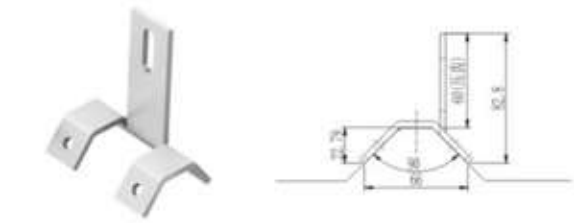
Item No. | KL 05
Description | AL6005-T5&SUS304
Rail Ingot Kit optional



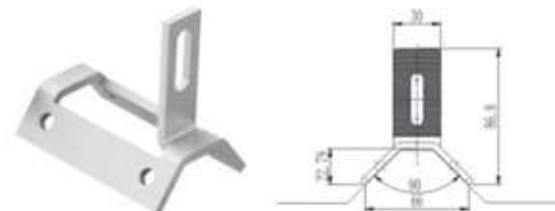
Item No. | KL 06
Description | AL6005-T5&SUS304
Rail Ingot Kit optional



Item No. | KL 07
Description | AL6005-T5&SUS304
Rail Ingot Kit optional



Item No. | KL 08
Description | SUS304&AL6005-T5
Rail Ingot Kit/Screw/EPDM optional



Item No. | KL 09
Description | SUS304&AL6005-T5
Rail Ingot Kit/Screw/EPDM optional



Item No. | KL 010
Description | SUS304&AL6005-T5
Rail Ingot Kit/Screw/EPDM optional

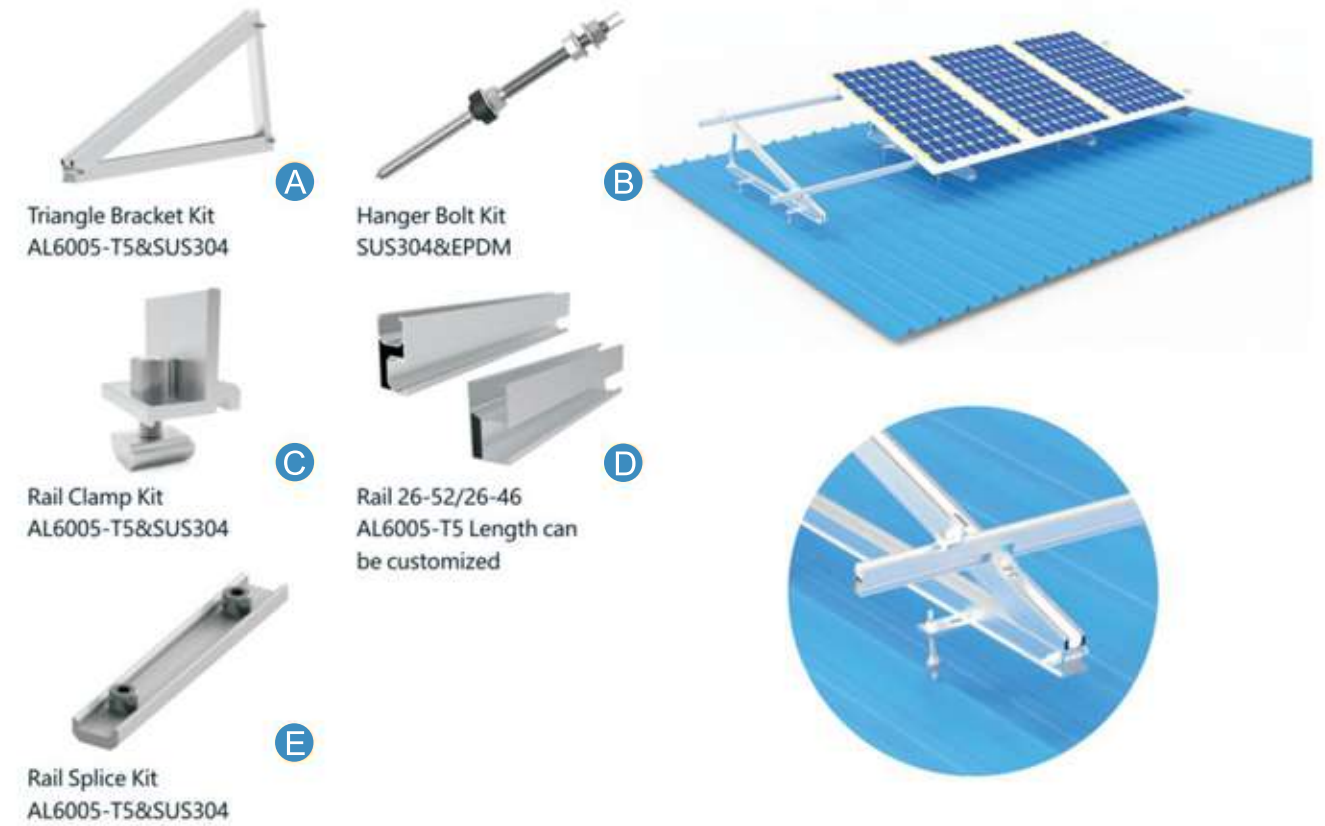


Components

Adjustable Angle Roof Mounting System



Solar Triangle with Hanger Bolt

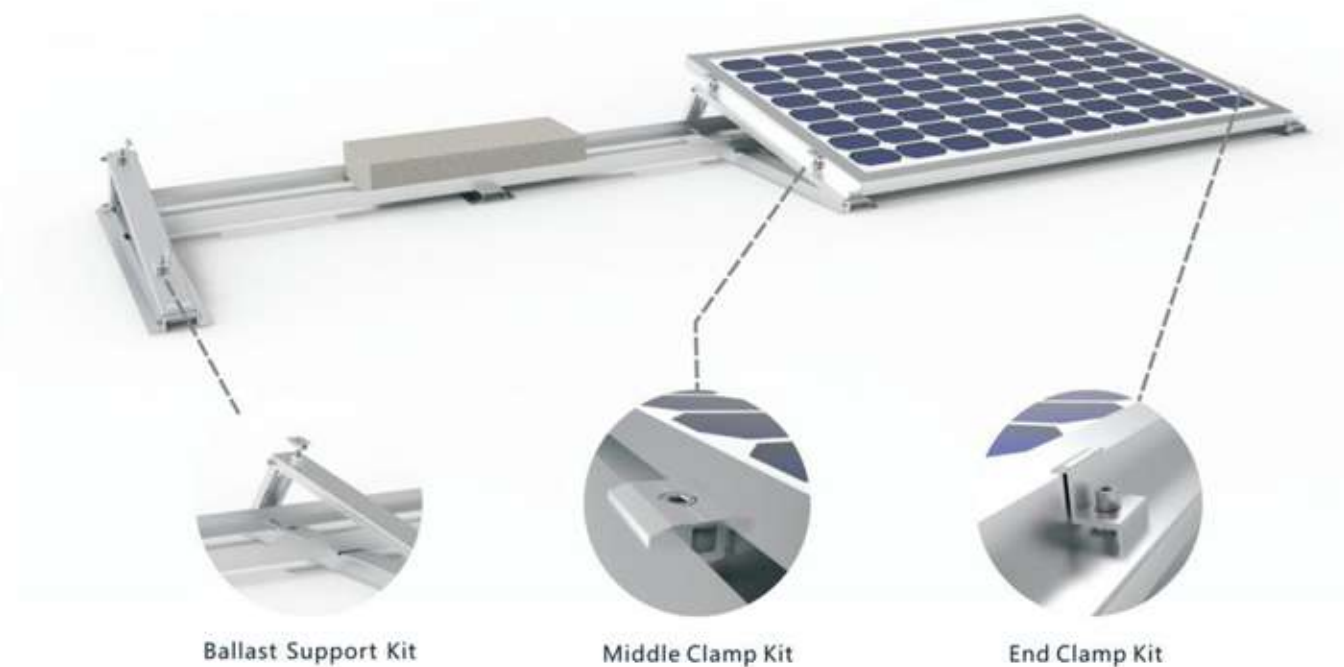


Solar Triangle with Roof Clamp Kit





Flat Roof Mounting System



Features

Flat roof mounting system is a highly engineered solution that secures the array without damaging the flat roof. It is compatible with the usual framed photovoltaic modules and typically does not require roof penetrations.

Components



Technical Parameter	
Application	Flat roof or ground
Wind Load	≤60 m/s
Snow Load	≤1.6 KN/m ²
Module Orientation	Landscape
Standards	ASCE_7-10, JIS C8955: 2017, EN1090, International Building Code IBC 2009
Material	AL6005-T5(Anodized)&SUS304



Ballast Support Kit
AL6005-T5&SUS304
EPDM optional

A



Chassis
AL6005-T5
EPDM optional

D



Middle Clamp Kit
30/35/40mm
AL6005-T5&SUS304
Black optional

B



Angle Aluminum
AL6005-T5
Length can be customized

E



End Clamp Kit
30/35/40mm
AL6005-T5&SUS304
Black optional

C



Components

Solar Tripod Roof Mounting System



Triangle Bracket Kit
AL6005-T5&SUS304

A



Rail 26-52/26-46
AL6005-T5
Length can be customized

D



Ballast Plate Optional
MAC Steel

B



Rail Splice Kit
AL6005-T5&SUS304

E



Rail Clamp Kit
AL6005-T5&SUS304

C

Components

Solar Ballast Roof Mounting System



Support Leg
Hot-dip Galvanized Steel Q235

A



Back Leg Kit
Hot-dip Galvanized Steel
Q235&SUS304

C



Front Leg Kit
Hot-dip Galvanized Steel
Q235&SUS304

B



End Clamp Kit
AL6005-T5&SUS304

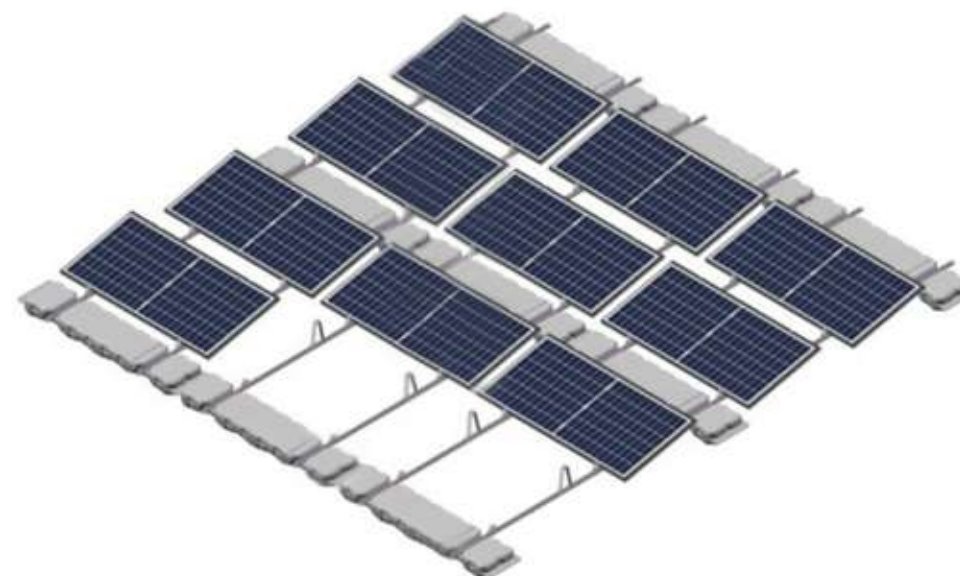
D



Floater-Based Roof Mounting System

Features

This series is a non-penetrating PV mounting system designed for commercial and residential cement flat roofs. It utilizes HDPE blow-molded hollow structures filled with water or other mediums as ballast blocks. The installation is convenient, and the system offers flexible arrangement to meet the personalized rooftop photovoltaic needs in various environments for different customers.



Components



Ballast Block A
HDPE

A



Front Support
Galvanized Zn-Al-Mg

D



Ballast Block B
HDPE

B



Rear Support
Galvanized Zn-Al-Mg

E



Purlin
Galvanized Zn-Al-Mg

C



Clamp
Aluminum alloy

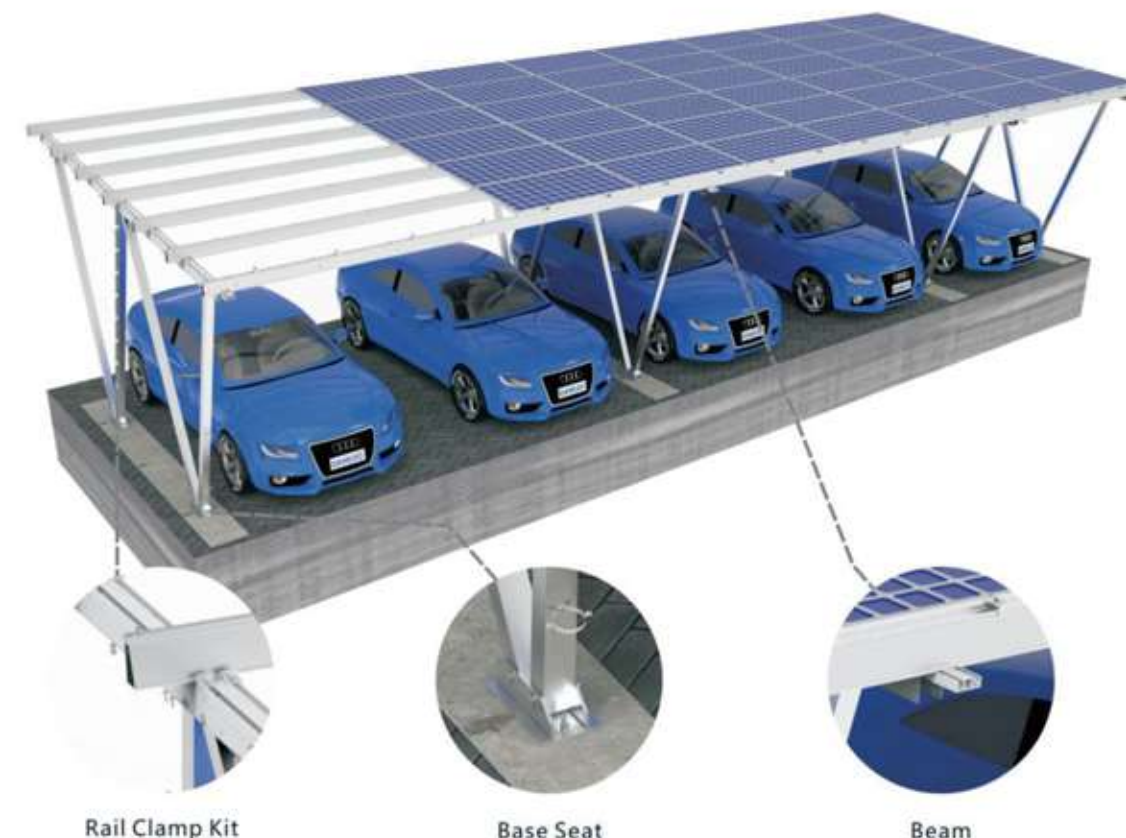
F

Technical Parameter	
Application	Flat Roof or Ground
Module Tilt	5-15°
Ground Clearance	≥250mm
Module Orientation	Landscape
Standards	ISO · 527-1, ISO · 178, ISO · 974, IEC · 60695-11-10, ISO · 175, IEC · 61215, ISO · 4892.3, GB · T5750-2006
Material	HDPE & Galvanized Zn-Al-Mg steel & SUS304





Aluminum Solar Carport



Features

Aluminum solar carport can be customized to meet the requirements of each project. The panels will make up the roof itself by mounting directly on the rails, instead upon the metal sheets or other canopies. It's an effective solution that is suitable for most houses and parking areas.

Components

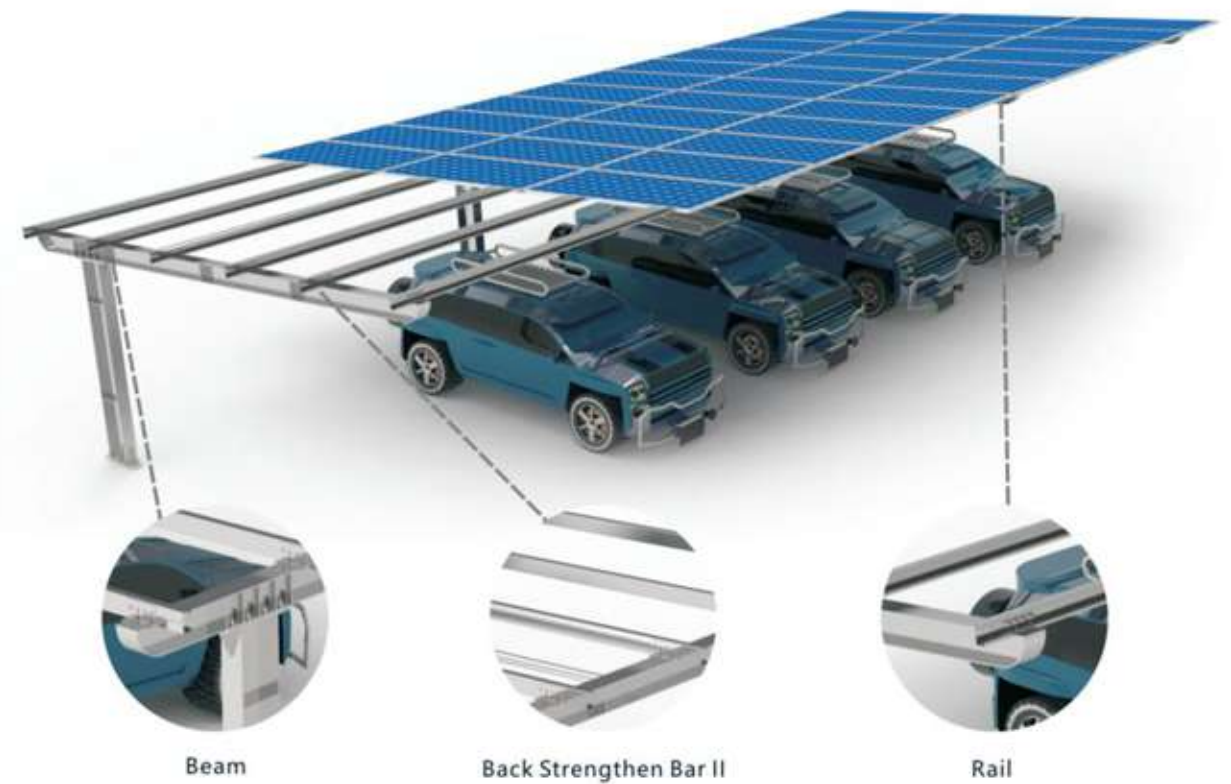


Technical Parameter	
Application	Ground
Tilt Angle	5° - 15°
Foundation	Concrete Base
Wind Load	≤60 m/s - non-waterproof system ≤45m/s - waterproof system
Snow Load	≤1.6 KN/m ² - non-waterproof system ≤1.2 KN/m ² - waterproof system
Module Orientation	Landscape/Portrait
Standards	ASCE_7-10, JIS C8955: 2017, EN1090, International Building Code IBC 2009
Material	AL6005-T5(Anodized)&SUS304





Steel Solar Carport



Features

Steel solar carport is designed for solar panel installation on parking areas, its single column design allows higher clearances and wider column spacing which ensures more space for car parking.

Components



Technical Parameter	
Application	Ground
Tilt Angle	5° - 15°
Foundation	Concrete Base
Wind Load	≤60 m/s - non-waterproof system ≤45m/s - waterproof system
Snow Load	≤1.6 KN/m ² - non-waterproof system ≤1.2 KN/m ² - waterproof system
Module Orientation	Landscape/Portrait
Standards	ASCE_7-10, JIS C8955: 2017, EN1090, International Building Code IBC 2009
Material	MAC steel & Hot-dip Galvanized Steel Q235 AL6005-T5(Anodized)&SUS304





Aluminum Ground Mounting System



End Clamp Kit

Middle Clamp Kit

Base Seat

Features

Aluminum ground mounting system uses anodized aluminum alloy structure, making the whole system light-weight, durable, recyclable and highly strong. Flexibility in height and angle adjustment makes the system applicable for different types of land forms.

Components



Technical Parameter	
Application	Ground
Tilt Angle	0° - 45°
Foundation	Concrete Base/Ground Screw
Wind Load	≤60 m/s
Snow Load	≤1.4 KN/m ²
Module Orientation	Landscape/Portrait
Standards	ASCE_7-10, JIS C8955: 2017, EN1090, International Building Code IBC 2009
Material	AL6005-T5(Anodized)&SUS304

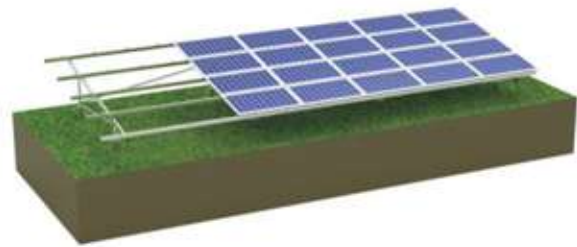
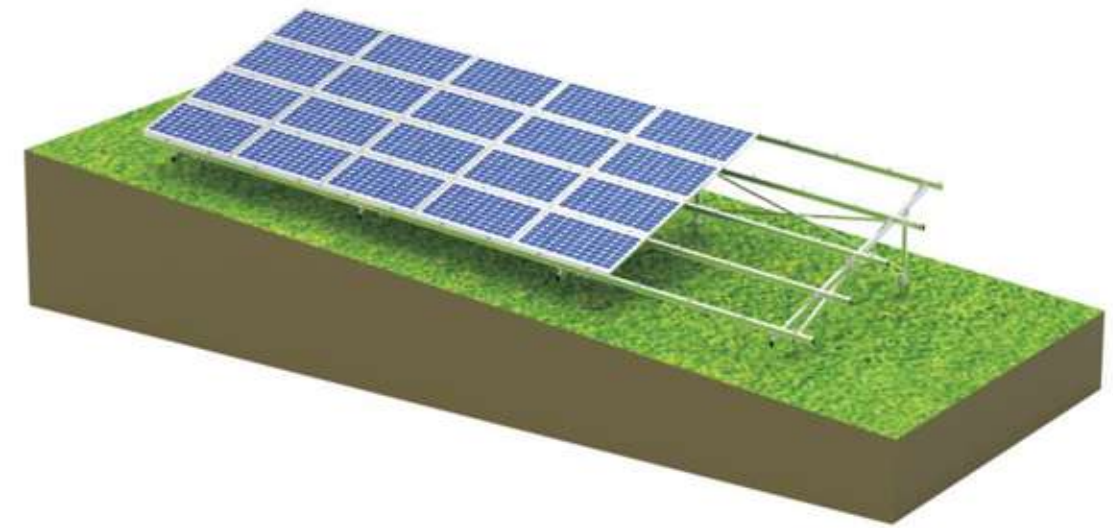
Features



W Shape



Pre-assembled Support



N Shape



Pre-assembled Support



A Shape Pre-assembled Support



N Shape Pre-assembled Support



W Shape Pre-assembled Support



VI Shape Pre-assembled Support

Components

Adjustable Ground Mounting System



A

Beam
AL6005-T5
Length can be customized



D

Adjustable Rail Fixing
Seat Kit
AL6005-T5&SUS304



B

Rail
AL6005-T5
Length can be customized



E

Diagonal Bar
AL6005-T5
Length can be customized



C

Rail Splice Kit
AL6005-T5&SUS304

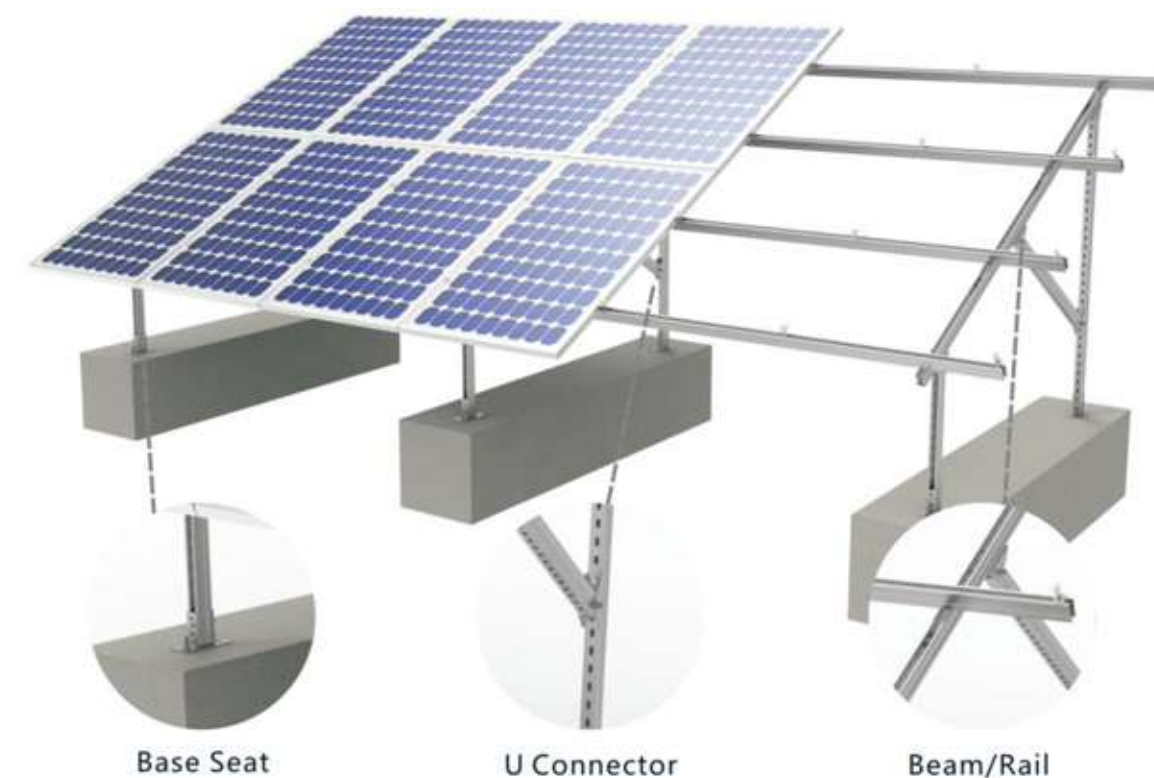


F

Rail Clamp Kit
AL6005-T5&SUS304



Steel Ground Mounting System



Base Seat

U Connector

Beam/Rail

Features

Steel ground mounting system creates an economical and reliable solutions for photovoltaic projects. According to different site conditions, MAC steel or hop-dipped galvanized carbon steel is adopted as the main material to form a stable and cost-effective design.

Components



Technical Parameter	
Application	Ground
Tilt Angle	0° - 45°
Foundation	Concrete Base/Ground Screw/Co r U Steel
Wind Load	≤60 m/s
Snow Load	≤1.6 KN/m ²
Module Orientation	Landscape/Portrait
Standards	ASCE_7-10, JIS C8955: 2017, EN1090, International Building Code IBC 2009
Material	MAC Steel/Hot-dip Galvanized Steel Q235 AL6005-T5(Anodized)&SUS304



A

Beam/Rail
MAC Steel/Hot-dip Galvanized Steel Q235
Length can be customized



D

Base Seat
Hot-dip Galvanized Steel Q235



B

U Connector
Hot-dip Galvanized Steel Q235



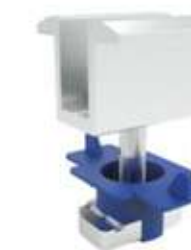
E

End Clamp
30/35/40mm
AL6005-T5&SUS304&Plastic



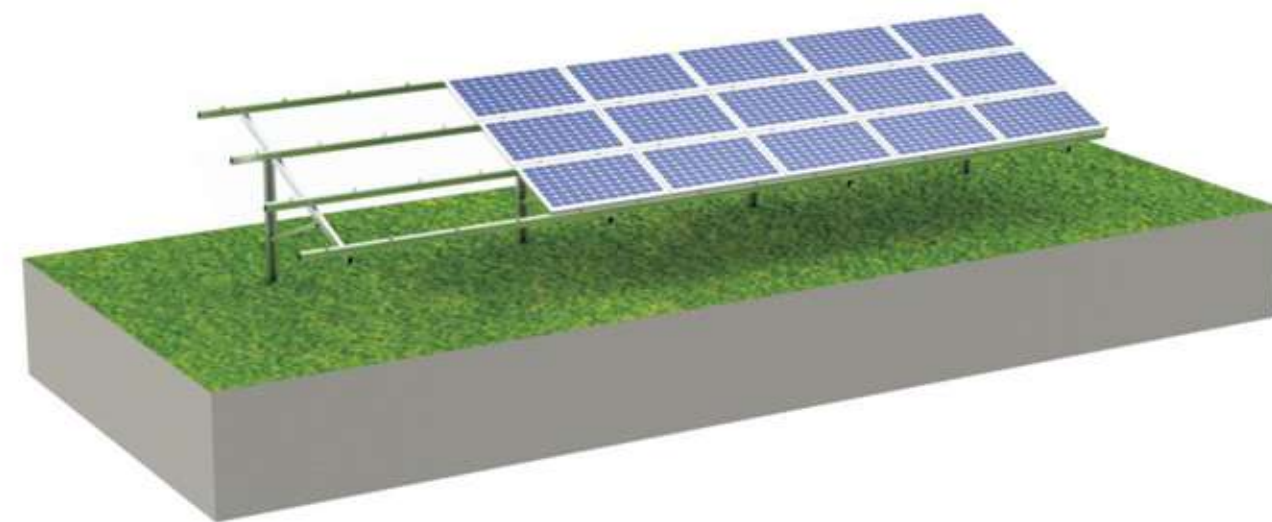
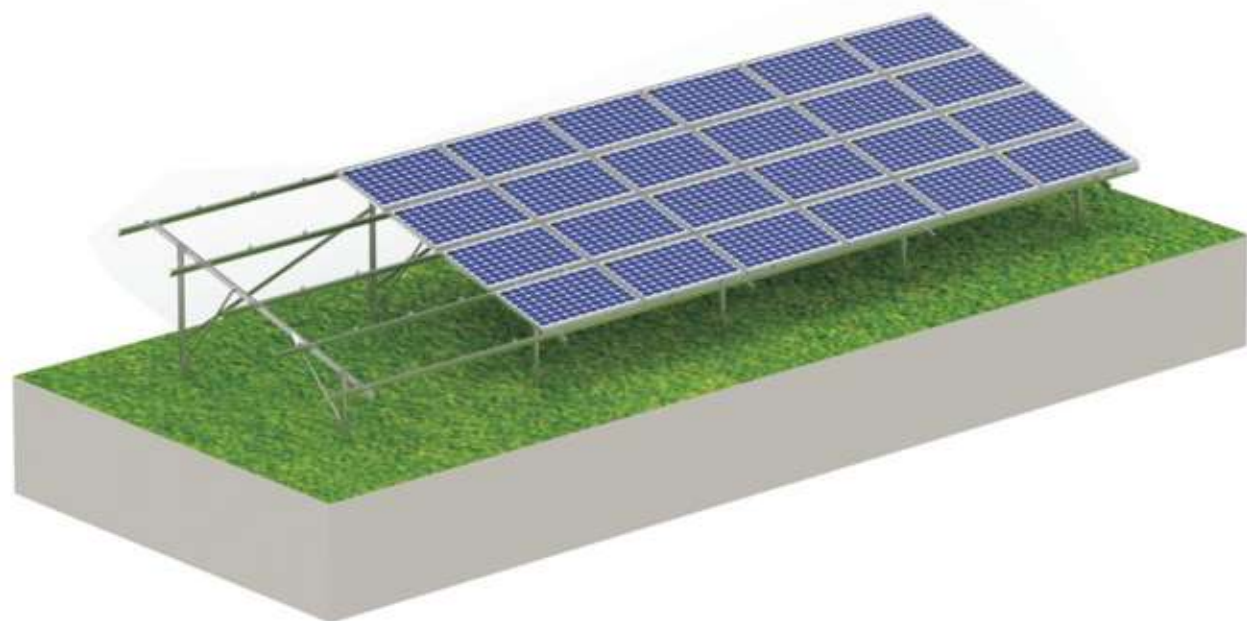
C

Rail Splice
Hot-dip Galvanized Steel Q235



F

Middle Clamp
30/35/40mm
AL6005-T5&SUS304&Plastic



Components

C Steel Ground Mounting System

Beam
MAC Steel/Hot-dip
Galvanized Steel Q235
Length can be customized

A

Diagonal Bar
MAC Steel
Length can be customized

D

Rail
MAC Steel/Hot-dip
Galvanized Steel Q235
Length can be customized

B

Middle Clamp Kit
30/35/40mm
AL6005-T5&SUS304

E

Base Seat
MAC Steel/Hot-dip
Galvanized Steel Q235

C

End Clamp Kit
30/35/40mm
AL6005-T5&SUS304

F

Components

Pole Steel Ground Mounting System

Beam
AL6005-T5
Length can be customized

A

Middle Clamp Kit
30/35/40mm
AL6005-T5&SUS304

D

U Pile
Hot-dip Galvanized Steel Q235
Length can be customized

B

End Clamp Kit
30/35/40mm
AL6005-T5&SUS304

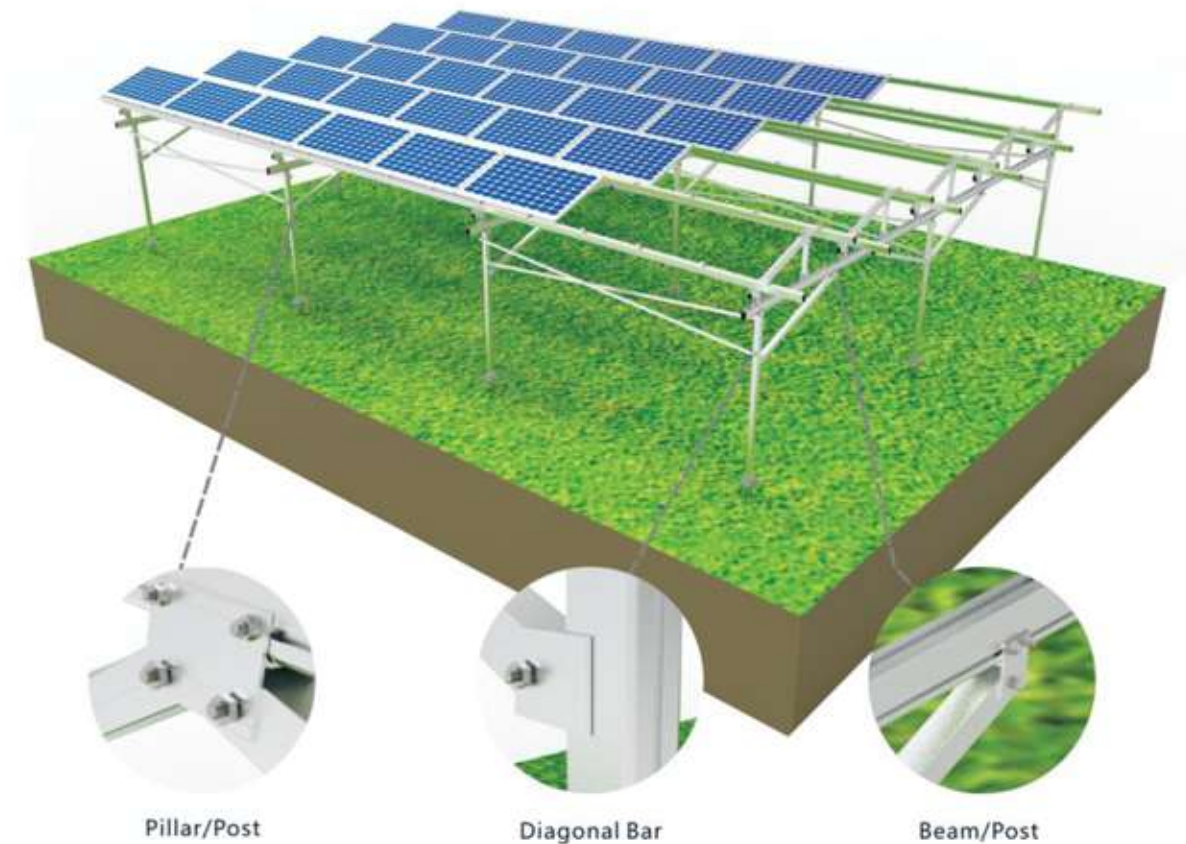
E

Connector
AL6005-T5

C



Solar Farm Mounting System



Features

Solar farm mounting system is a high-tech agriculture structure which can utilize farm spaces without effecting plant growth. Our solar farm mounting system can offer great PV module installing solution for farm lands.

Components



Technical Parameter	
Application	Ground/Farmland
Tilt Angle	0° - 30°
Foundation	Concrete Base/Ground Screw
Wind Load	≤60 m/s
Snow Load	≤1.6 KN/m ²
Module Orientation	Landscape/Portrait
Standards	ASCE 7-10, JIS C8955: 2017, EN1090, International Building Code IBC 2009
Material	AL6005-T5(Anodized)&SUS304



Beam
AL6005-T5
Length can be customized

A



Pre-assembled Support Kit
AL6005-T5&SUS304

D



Rail
AL6005-T5
Length can be customized

B



Post
AL6005-T5
Length can be customized

E



Pillar
AL6005-T5
Length can be customized

C

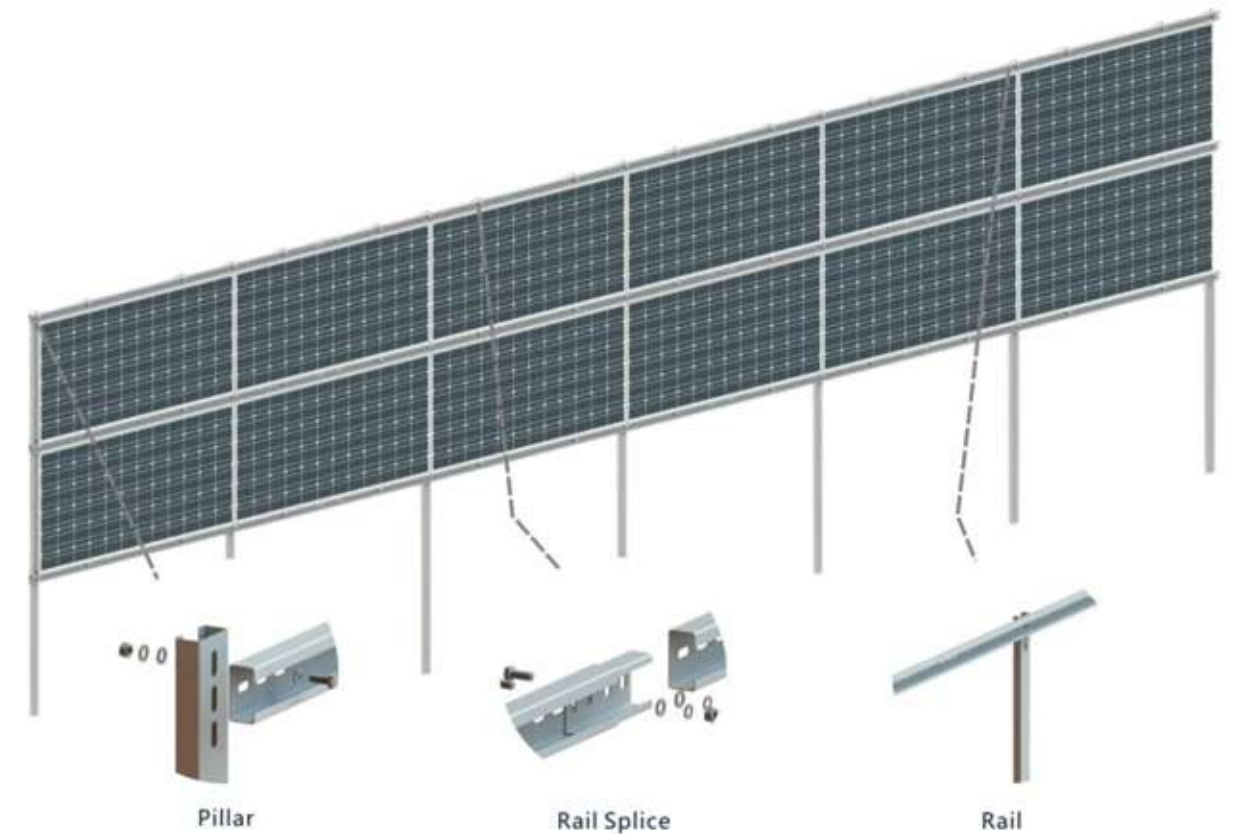


Diagonal Bar
AL6005-T5
Length can be customized

F



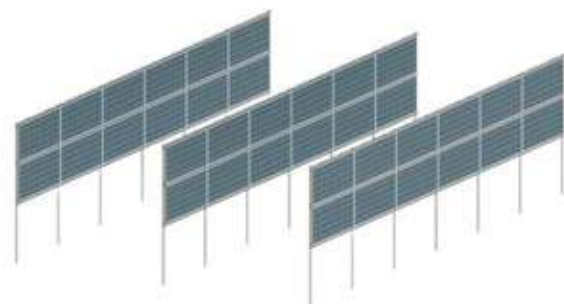
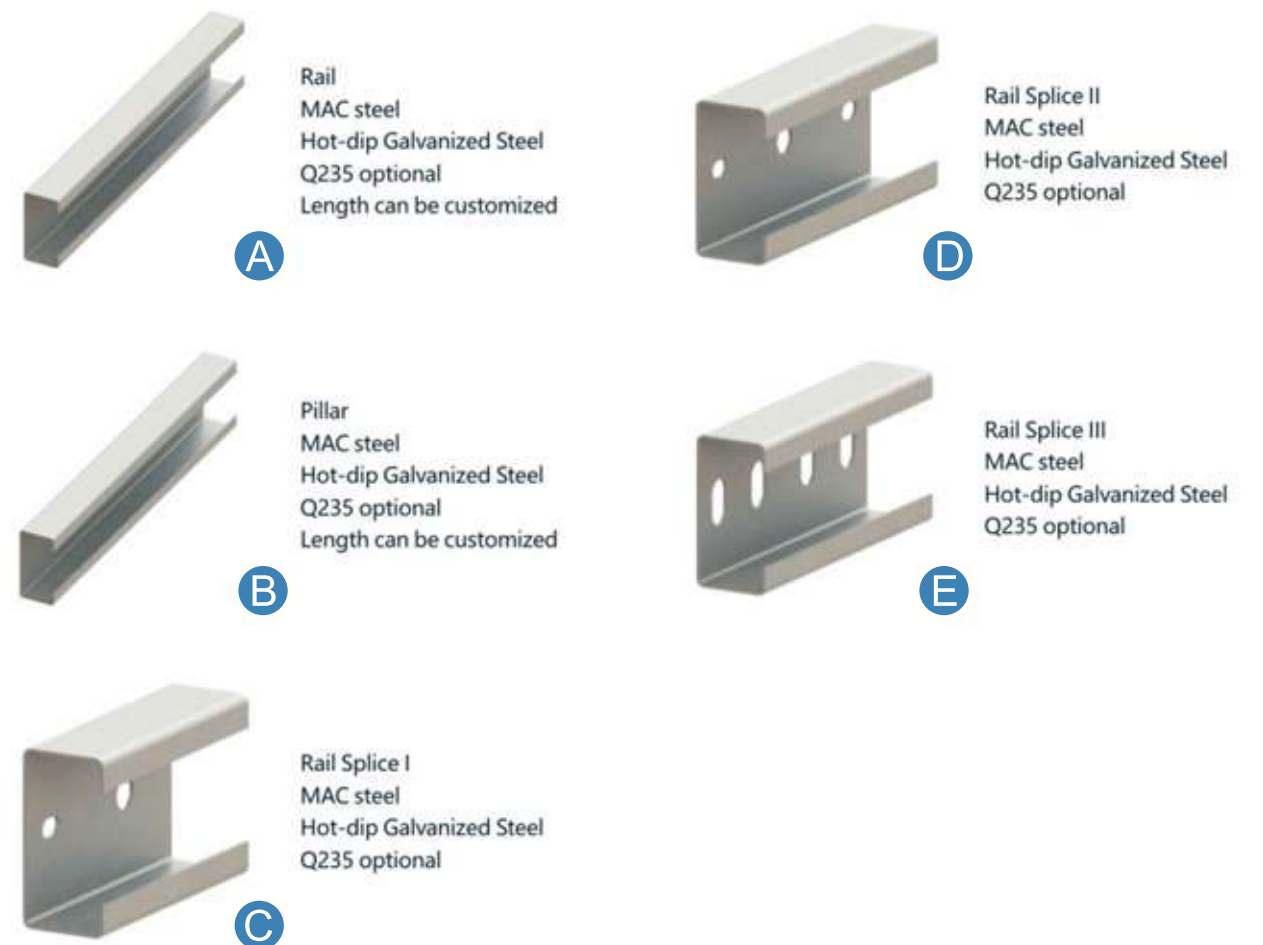
Solar Vertical Mounting System



Features

Solar vertical mounting system adapts to almost every terrain and can easily be mounted on site with just a few screw connections. Also, a galvanizing of the material surface provides additional protection against external influences. Rammed steel profiles represent a cost-effective foundation. Drilled and concrete foundations are also possible as an adaption to local conditions.

Components



Technical Parameter	
Application	Flat Ground / Farmland / Sloping Ground / Snowy Region
Tilt Angle	90°
Foundation	Steel Pillar / Concrete Base
Wind Load	≤40 m/s
Snow Load	≤1.2 KN/m ²
Module Orientation	Landscape/Portrait
Standards	ASCE_7-10, JIS C8955: 2017, EN1090, International Building Code IBC 2009
Material	MAC steel&Hot-dip Galvanized Steel Q235 AL6005-T5(Anodized)&SUS304



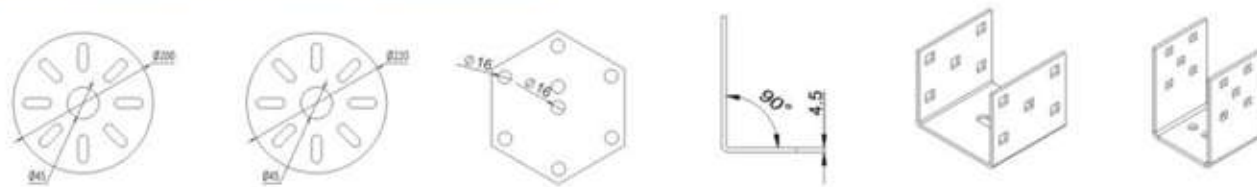
Ground Screw

Features

Ground screw which is a modern foundation system and widely used in medium to large-scale solar farm installation, using the drilling machine to install which makes it as the most efficient and cost-saving footing solution. It can be widely applied to different soil conditions.



Technical Parameter	
Material	Q235 Carbon Steel
Length	600 - 3000mm or Customized
Flange Diameter	180/200/220mm or Customized
Thickness	3.0—4.0mm
Pipe Diameter	60/76/89mm or Customized
Surface Treatment	Hot-dip Galvanized Steel ($\geq 80\mu\text{m}$)



※ Length / Thickness / Diameter / Flange Type can be customized

Process



Cutting



Heating



Shrinking



Hole Drilling



Welding



Galvanizing



Testing



Packing



Solar Fence



Ground Nail

Pole

Hook

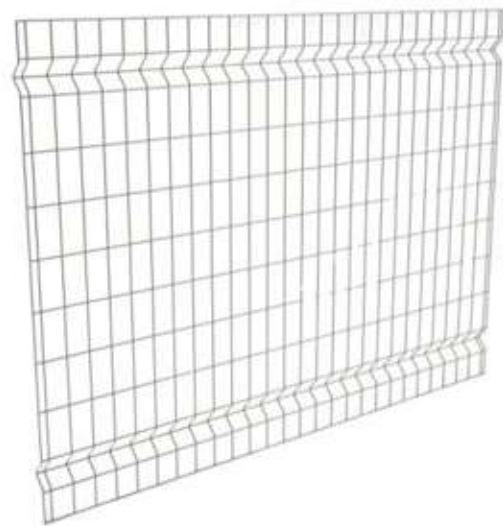
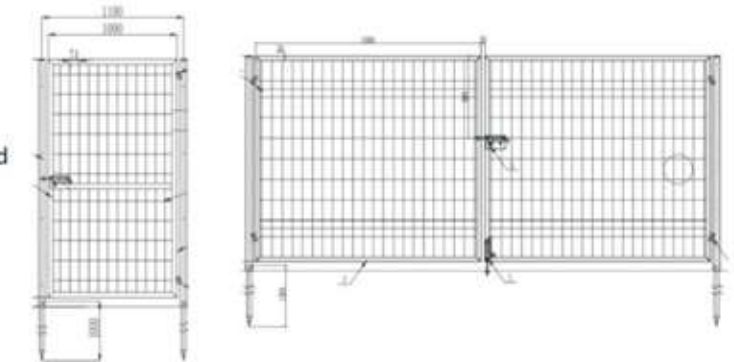
Steel Mesh Connector

Features

PVC coated fence is affordable and inexpensive and also very durable and easy to make and fix on fence. The hot-dip galvanizing process effectively exerts the rust-proof performance, it can still maintain high durability even in harsh environments.

Components

Material: Steel
 Width: 2m
 Surface Treatment: Hot-dip Galvanized /PVC Coated
 Size: H0.8m/1.2m/1.5m/1.8m/2.0m
 Color: Silver, White, Brown, Green
 Installation: Flat/Sloping Ground
 Foundation: Concrete Base/Piling



Specification					
	Width (mm)	Height (mm)	Mesh Dimension (mm)	Material	
Fence	2000	1200	74*150 50*150	Hot-dip Galvanized Steel	
		1500			
		1800			
	Type	Width (mm)	Height (mm)	Foundation	Material
Door	Single Door	1000	1200	Concrete Base Piling	Hot-dip Galvanized Steel/PVC Coated Steel
	Double Door	2000 (each door 1000)	1500		
		4000 (each door 2000)	1800		



Silver



White



Brown



Green