

Balcony Mounting Kit



All-in-one-solution

Product Features

- Specially designed for balcony power system.
- For mounting of solar modules and micro inverters.
- Suitable for panel with the length up to 2270mm or customized.
- Perfect for mounting on cylindrical and quadratic balcony handrails (up to 60mm).

Technical Data

Project site	Balcony
Slope of roof	15°-30°
Max Building Height	Up to 20m
Wind Load	34m/s (TUV TEST)
Snow Load	2.7kn/ m ²
Applicable Module	Frame module
Module Orientation	Landscape
Material	Stainless steel 304, Al6005-T5



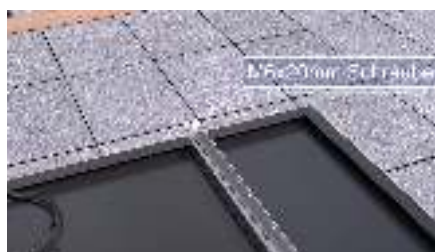
System Overview



Packing List

Hook kit		SUS304	2 kits
Adjustable Tripod		AL6005-T5 & SUS304	2 kits

Installation



Step1



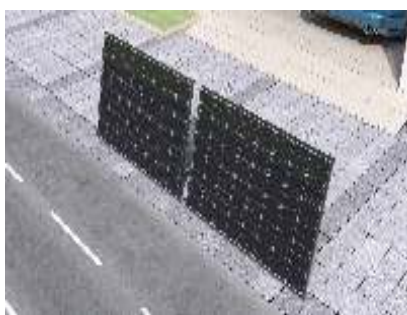
Step2



Step3



Step4



Step5



Step6