



PRODUCT OVERVIEW

Complete power storage system features inverter and long life LiFePO4 batteries with high performance battery management system (BMS) and PCS is suitable for a wide range of applications. The SR-EOH energy storage system’s modular design, including power modules and battery expansion modules, can be easily combined into a system of any capacity required.

FEATURES

- **EASY TO UPSCALE** - The system allows for parallel connection of up to 9 batteries, providing a maximum capacity of 45kWh
- **EASY TO INSTALL** - Integrated inverter design, easy to use and quick to install; plug-and-play, eliminates wire clutter
- **USER FRIENDLY** - The system offers various charging methods, including solar power, commercial power or a combination of both
- **INTELLIGENT** - Users can set the charging and discharging time of the battery and mains to save on electricity bills; large LCD screen with real-time data
- **SAFETY** - High quality lithium iron phosphate cells; proven Li-ion battery management solutions
- **DESIGNED FOR FAMILIES** - Support off-grid output; multiple charge and discharge modes available

APPLICATIONS

- Emergency power supply
- Home backup storage
- Solar power storage
- Telecommunications backup power storage
- Data storage/UPS backup power storage
- Off-grid power

Product Description

PART#	DESCRIPTION	VOLTAGE	CAPACITY	OUTPUT	INPUT VOLTAGE
EV-SR-EOH10S-220	1 Inverter 10kW, 2 Batteries 5.12kWh	51.2V	10.24kWh	200Ah	90~140Vac
EV-SR-EOH15S-220	1 Inverter 10kW, 3 Batteries 5.12kWh	51.2V	15.36kWh	300Ah	90~140Vac
EV-SR-EOH20S-220	1 Inverter 10kW, 4 Batteries 5.12kWh	51.2V	20.48kWh	400Ah	90~140Vac
EV-SR-EOH25S-220	1 Inverter 10kW, 5 Batteries 5.12kWh	51.2V	25.6kWh	500Ah	90~140Vac

Inverter Module Specifications

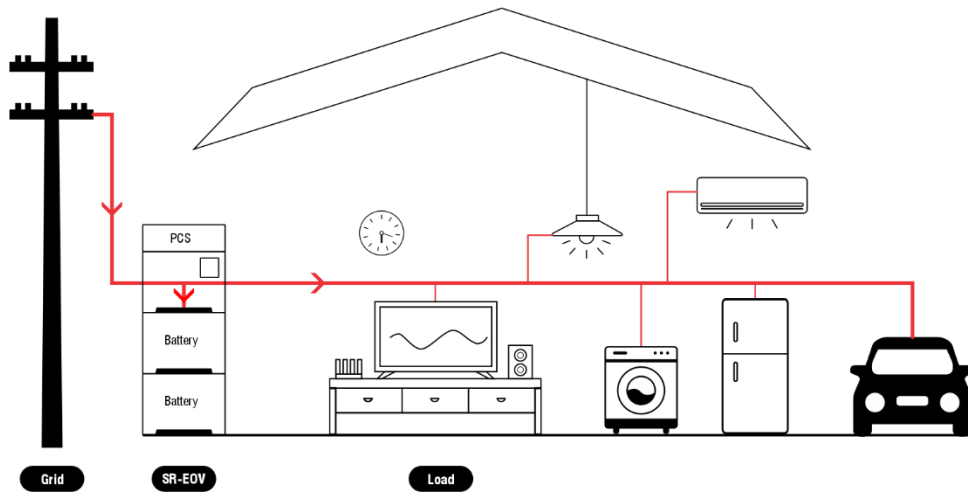
MODEL#		EV-SR-EOH10S-220
OUTPUT		
Rated Output Power	10,000W	
Maximum Peak Power	20,000VA	
Load Capacity of Motor	6HP	
Wave Form	Pure Sine Wave	
Rated Output Voltage	230Vac (single phase)	
SOLAR INPUT		
Solar Charge Type	MPPT	
Maximum Solar Array Power	5,500W+5,500W	
Maximum Solar Open Circuit Voltage	500Vdc	
GRID/GENERATOR INPUT		
Input Voltage Range	90~270Vac	
Bypass Overload Current	63A	
BATTERY CHARGING		
Maximum Solar Charging Current	200A	
Maximum Grid/Generator Charging Current	120A	
Dimension	655*353*185mm (2.14*1.15*0.6ft)	

Battery Module Specifications

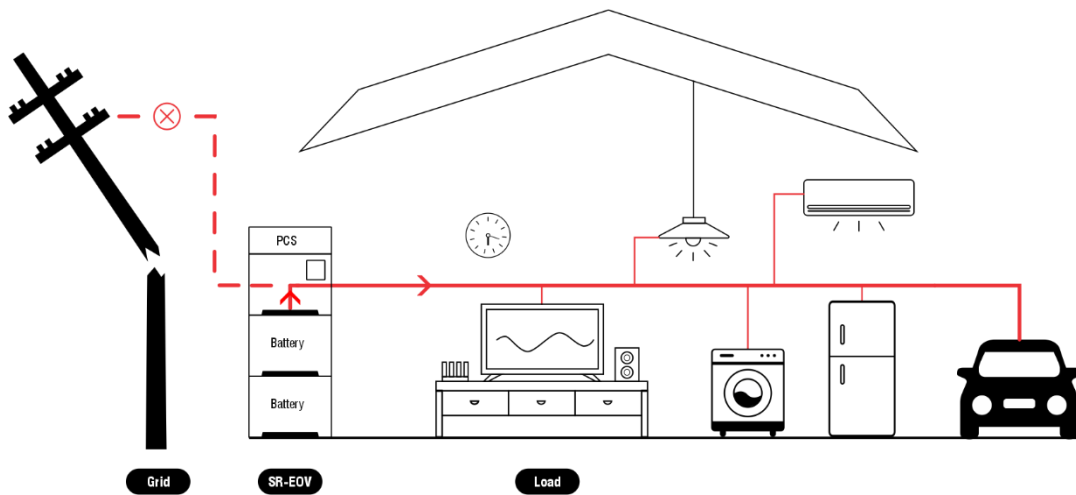
MODEL#		EV- SR-EOH05B
Battery Power	5.12kWh	
Rated Voltage	51.2V	
Rated Capacity	100Ah	
Battery Type	LFP	
Cycling Lifespan	6000 (80%DOD, 0.5C, 25°C)	
Maximum Parallel Capacity	9 units (up to 46.08kWh)	
Dimension	655*353*185mm (2.14*1.15*0.6ft)	
Standard	UN38.3, MSDS, IEC62619, UL1973, IEC61000-6:2019, RoHS	

Application Scenarios

Grid Power Storage

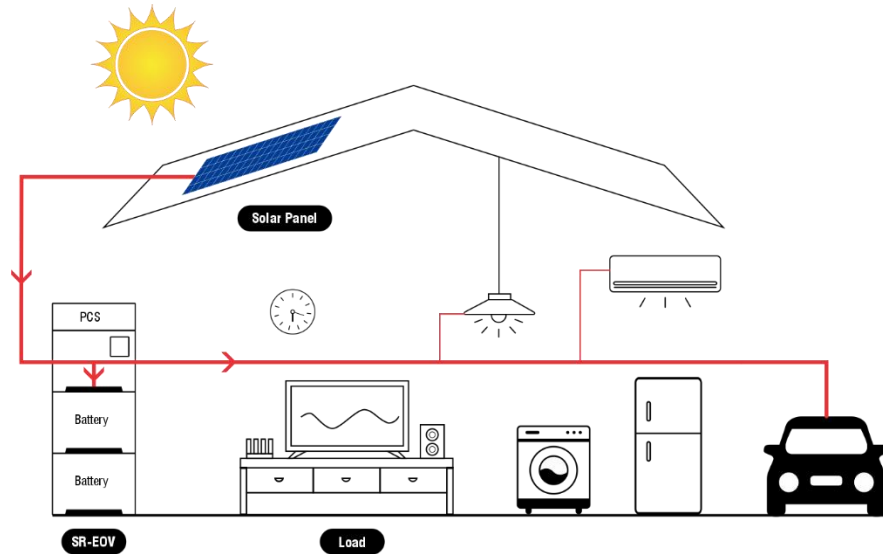


Power Storage Mode

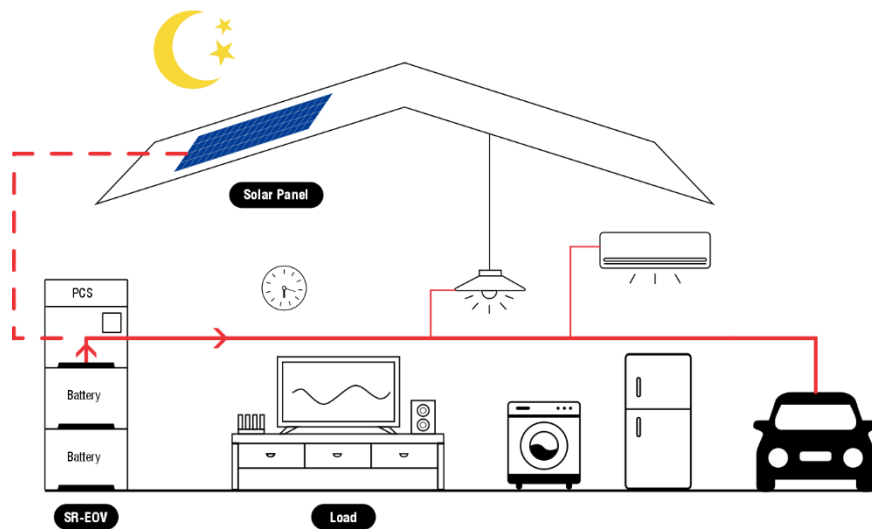


Emergency Power Discharge Mode

Off-Grid Solar Power Storage

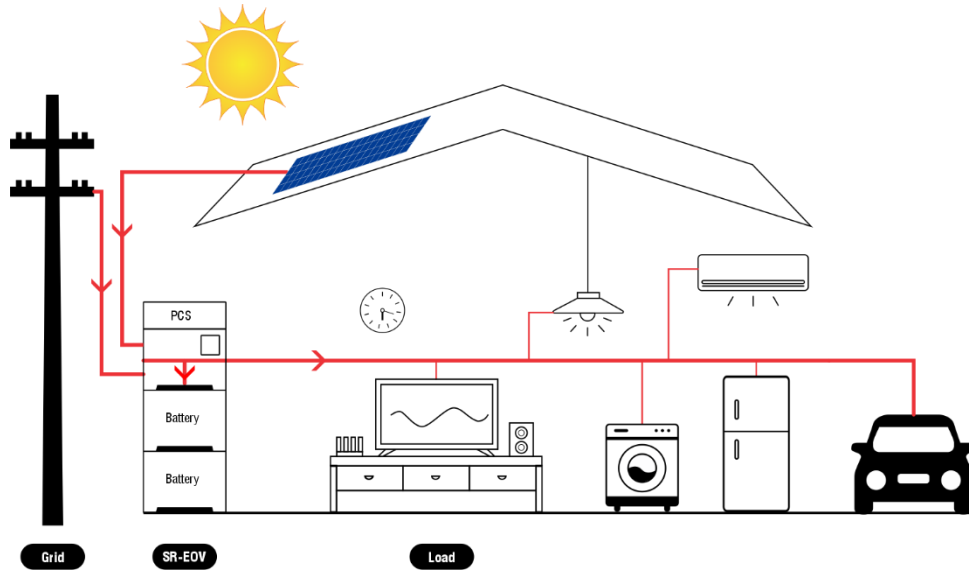


Power Storage Mode

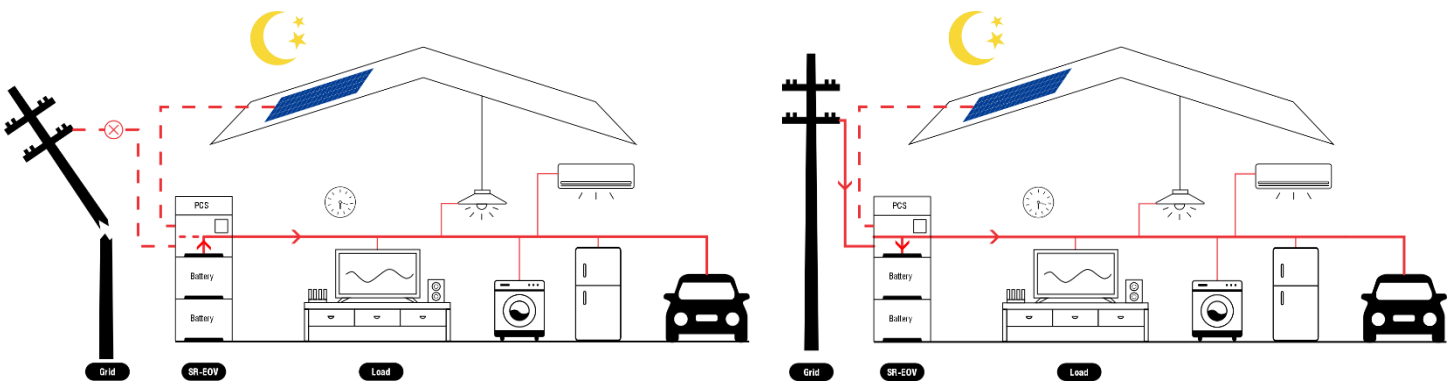


Power Discharge Mode

Grid and Solar Combined Power Storage



Power Storage Mode



Emergency Power Discharge Mode

Night Power Storage Mode