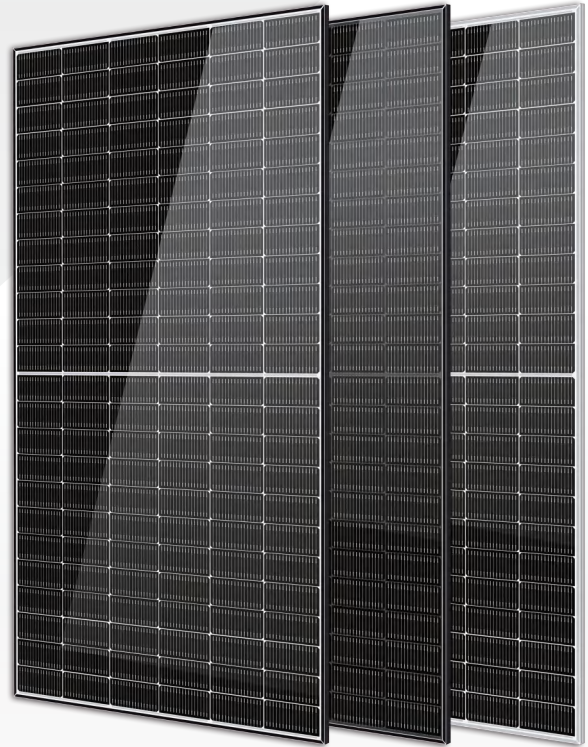


Solar Ocean

560–580 Watt TOPCon MONO-FACIAL MODULE

- IEC61215: 2021
- IEC61730: 2016
- TUV Rheinland Standard
- Lloyd'S Ariel Re
- Solar Performance Insurance
- ISO9001: 2015
- Quality Management System
- ISO14001:
- Environmental Management System
- CE: Europe Standard
- Inmetro Certificate
- Japan JP-AC



KEY FEATURES



SMBB Cell

More uniform current collection capability, reducing the current heat loss of the internal cells.



Low Light Features

Higher performance under low light environment.



Higher Output Power

The output power of 144 half-cells Monocrystalline modules is up to 580W.



PID Protection

Ensure the attenuation probability caused by PID phenomenon is minimized.



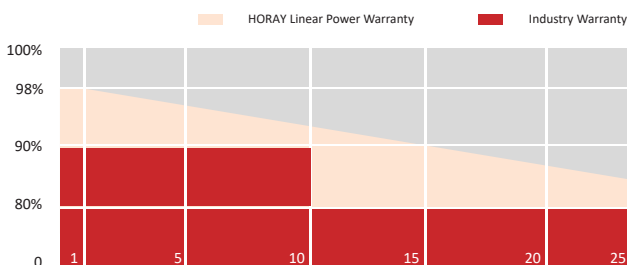
Harsh Environmental Adaptability

Strict salt spray and ammonia corrosion test by the third party.



Load Capacity

Mechanical load tests including wind load 2400 Pa and snow load 5400 Pa.



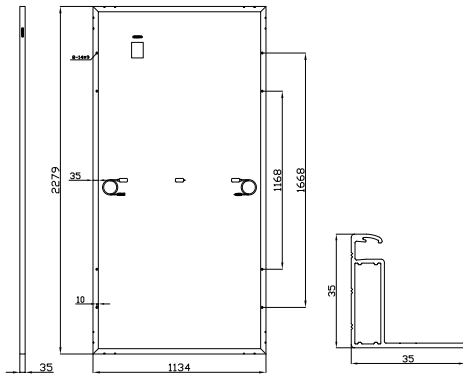
HEADQUARTER: HORAY SOLAR CO., LTD.

GLOBAL MARKETING AND SERVICE: HORAY SOLAR GMBH

✉ sales@horaysolar.com 🌐 www.horaysolar.com ☎ +86-510 83580688
📍 NO.30-5, East Yanxin Road, Huishan District, Wuxi 214177 Jiangsu P.R China

✉ info@horaysolar.com 🌐 www.horaysolar.com
📍 Lurgiallee 10-12 Frankfurt am Main 60439 Germany

MECHANICAL DIAGRAMS



SPECIFICATIONS

Weight	29kg
Dimension	2279mm*1134mm*35mm
Cell Dimension	182*91mm
Cell Amount	72*2 pcs
Maximum System Voltage	1500V
Junction Box	IP68
Frame	Aluminum Alloy
Cable	4mm ² ,+300,-300mm/±1300mm Length can be customized
Connector	MC4 compatible
Application Level	Class A

ELECTRICAL PARAMETERS AT STC

Module Type	HS560TC-MHO	HS565TC-MHO	HS570TC-MHO	HS575TC-MHO	HS580TC-MHO
Power	560W	565W	570W	575W	580W
Open Circuit Voltage	51.60V	51.70V	51.80V	51.90V	52.0V
Short Circuit Current	13.56A	13.60A	13.63A	13.65A	13.71A
Maximum Power Voltage	44.03V	44.39V	44.67V	44.93V	45.23V
Maximum Power Current	12.72A	12.73A	12.76A	12.80A	12.82A
Module Efficiency	21.67%	21.86%	22.06%	22.25%	22.44%

* Under Standard Test Conditions (STC) of irradiance of 1000 W/m², spectrum AM 1.5 and cell temperature of 25°C.

ELECTRICAL PARAMETERS AT NMOT

Power	448W	452W	456W	460W	464W
Open Circuit Voltage	52.88V	53.30V	53.66V	53.92V	54.26V
Short Circuit Current	10.78A	10.80A	10.81A	10.84A	10.87A
Maximum Power Voltage	44.06V	44.41V	44.71V	44.93V	45.22V
Maximum Power Current	10.17A	10.18A	10.20A	10.24A	10.26A
Module Efficiency	17.33%	17.49%	17.64%	17.80%	17.95%

* Under Nominal Module Operating Temperature (NMOT), irradiance of 800 W/m², spectrum AM 1.5, ambient temperature 20°C, wind speed 1 m/s.

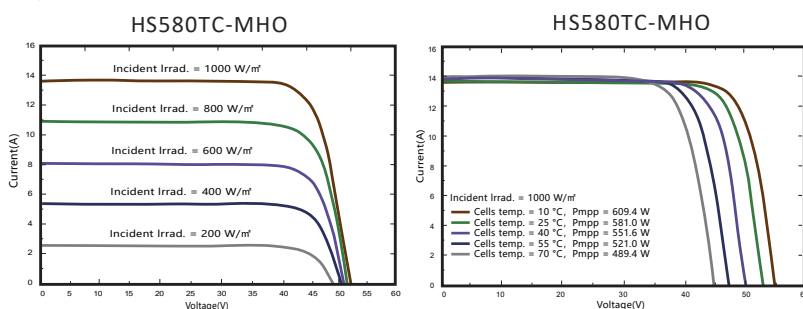
TEMPERATURE CHARACTERISTICS

NMOT	45±2°C	Temp Coefficient of ISC	+0.05%/°C
Temp Coefficient of VOC	-0.28%/°C	Temp Coefficient of Pmax	-0.34%/°C

PACKING CONFIGURATION

Modules/Pallet	31 Pieces	Modules/40' Container	620 Pieces
Packaging Description	20 Pallets, Total=(31+31)x10=620 Pieces		

IV CHARACTERISTICS



MAXIMUM RATING

Power selection	0~+5W
Measuring uncertainty of Pm	0~±3%
Operating Temperature	-40°C~+85°C
Wind Load/Snow Load	2400pa/5400pa
Fuse Current	25A

15 YEARS Quality Warranty

25 YEARS Power Warranty

CAUTION: READ SAFETY AND INSTALLATION INSTRUCTIONS BEFORE USING THE PRODUCT.

©2023 Horay Solar Co.,Ltd. All rights reserved. Specifications included in this datasheet are subject to change without notice.

Version number: MHO_EN_2023_A