

# Q.HOME CORE H4/A4

## Energy Storage Solution



**H4 : DC-coupled (Hybrid)**  
**A4 : AC-coupled**

**MODEL** Q.VOLT H4.6S/A4.6S | Q.SAVE B6.8S | Q.OMMAND



### Easy installation

Equipment design emphasizing improved simplicity of installation



### ATS-free Seamless Control

Seamless operation mode conversion for continuous and stable backup without external ATS on both circumstances, grid fault and restoration



### High efficiency

Competitive round-trip efficiency all-around system



### Extended Warranty\*

Fully wrapped 15-year product and performance warranty



### Scalable battery

Scalable battery from 6.8kWh, 13.7kWh and 20.5kWh to suit specific energy consumption



### Enhanced reliability

Excellent system reliability with Samsung SDI battery cells  
\*Please refer the warranty document

### The ideal solution for:



Residential  
PV system

\* For details about warranty, refer to the warranty document.

## ■ Technical Specification

GENERAL PRODUCT INFORMATION		Q.HOME CORE H4	Q.HOME CORE A4
Dimensions Inverter Module/Battery Module (W × H × D)	[mm]	460 × 700 × 221, 238 (From Wall)	
Weight Inverter Module/Battery Module	[kg]	37.5/61.1	33.9/61.1
Operating Temperature Range	[°C]	Q.VOLT: -20 to 60 (de-rating Start temp. 45), Q.SAVE: -10 to 45	
Relative Humidity	[%]	4 to 100 (Condensing)	
Protection Degree/Class		IP65	
Mounting		Wall-Mounted or Floor-Mounted Options	
Max. Operation Altitude	[m]	2,000	
Cooling Method		Natural air cooling	
Product Warranty/Performance Warranty		15/15 years	
Noise Emissions		≤ 40 dB (A) @ 1m	
Over Voltage Category (Internal)		OVC II (DC)/OVC III (AC)	
Communications		LAN, RS485, CAN, Wi-Fi (optional), LTE (optional)	
Remote Monitoring		Web, Mobile & App	
Software Update		Online update	
Energy Management System		Integrated	
Country of Manufacturer		Republic of Korea	

PV DATA (DC)			
Max. Input power (Max. Input per MPPT)	[kWp]	8.0 (4.0 per MPPT)	N/A
Max. Input Voltage	[V <sub>dc</sub> ]	600	N/A
Start Input Voltage/MPP Voltage Range	[V]	120/90 to 550	N/A
Number of Independent MPPTs		2	N/A
Number of DC Input Pairs per MPPT		1	N/A
Max. Input Current per MPPT / Max. Short Circuit Current per MPPT	[A]	15/20	N/A
DC Connection Type		MC4	N/A

GRID DATA (AC)			
Max. Apparent Power/Rated Output Power	[kVA/kW]	5 (4.6 for DE, 3.68 for G98)/5 (4.6 for DE, 3.68 for G98)	
Nominal Voltage/Range	[V]	230/184 to 264 (230/184 to 262 for G98)	
Nominal Grid Frequency/Range	[Hz]	50, 60/-5Hz to +5Hz	
Feed-in Phase/Connection Phase		Single/Single	
Nominal Current/Max. Current/Max. Over-Current Protection	[A]	21.7/25/30 (20/25/30 for DE, 16/20/30 for G98)	
Power Factor Range		0.95 lagging to 0.95 leading	
Total Harmonic Distortion	[%]	≤ 5	

BACKUP POWER OUTPUT (ALTERNATING CURRENT)			
Connection Phase		Single	
Rated Apparent Power/Rated Power (only Battery)	[kVA/kW]	3.3 to 4.5/3.3 to 4.5 @ 1 Battery Pack (3.3 to 3.68/3.3 to 3.68 @ 1 Battery Pack for G98) 5 (4.6 for DE, 3.68 for G98)/5 (4.6 for DE, 3.68 for G98) @ 2, 3 Battery Pack	
Rated Apparent Power/Rated Power (with PV)	[kVA/kW]	5 (4.6 for DE, 3.68 for G98)/5 (4.6 for DE, 3.68 for G98) (max)	
Rated Voltage	[V]	230	
Rated Frequency	[Hz]	50, 60	
Overload support		30 sec for 3.68 - 4.05kVA, 20sec for 4.05 - 4.41kVA, 10 sec for 4.41 - 4.78kVA @ 2, 3 Battery Pack and Off-grid	

EFFICIENCY			
MPPT Efficiency	[%]	99.9	N/A
Max. Efficiency (PV to Grid)	[%]	97	N/A
Max. Efficiency (PV to Battery)	[%]	97.8	N/A
Max. Efficiency (Battery to Grid)	[%]	96.3	

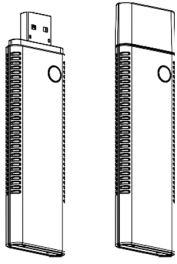
BATTERY UNIT (DC)			
Battery Technology		Lithium-ion NCA (Samsung SDI)	
Battery Energy	[kWh]	6.8/13.7/20.5 (6.86 kWh/pack)	
Battery Usable Energy	[kWh]	6.5/13.0/19.5 (6.51 kWh/pack)	
Max. Charge Power/Max. Discharge Power	[kW]	3.8/4.5 (3.8/4.5 for DE, 3.8/3.68 for G98) @ 1 Battery Pack 5.0/5.0 (5.0/4.6 for DE, 5.0/3.68 for G98) @ 2, 3 Battery Pack	
Converter Technology		Non-isolated	
Rated Battery Voltage/Battery Voltage Range	[V <sub>dc</sub> ]	202.8/168.0 to 228.2	
Maximum Charge/Discharge Current	[A]	16.9/20 (for each Q.SAVE unit)	
Depth of Discharge (DoD)	[%]	95	

CERTIFICATES AND APPROVALS			
Inverter Model Name		Q.VOLT H4.6S	Q.VOLT A4.6S
Battery Model Name		Q.SAVE B6.8S	
Certificates and Approvals		VDE-AR-N 4105:2018, CE, IEC 62109-1, IEC 62109-2, IEC 62040-1, IEC 62619, IEC 62477-1, EN50549-1, EN 61000-6-2, EN 61000-6-3, IEC 60068-2-52, IEC 60730-1 ANNEX.H, G98, G99, G100, VDE V 0126-1-1/08:13, XP C15-712-3:2019, VFR 2019, SEI REF 04 Version 7	

## ■ Accessories Specification

### SBED-00022

#### WI-FI DONGLE (WITH COVER)



##### Features

- USB Dongle for Wi-Fi 5 wireless LAN.  
Based on Realtek RTL8822CU solution.
- IEEE 802.11 a/b/g/n/ac 2T2R Dual Band MIMO
  - Two stream spatial multiplexing 802.11n/802.11ac
  - Use on-chip OTP (One-Time Programmable)
  - Host Interface : USB2.0
  - Security : WAPI, WPA, WPA2
  - WPS function by button

##### Electrical Characteristics

RF Characteristics for IEEE802.11b, g, a, gn, an, ac

##### Weight

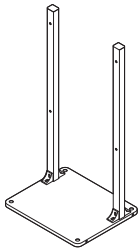
16.3 ± 0.5 g

##### Dimension

27.0 (W) × 8.0 (D) × 97.4 (H)mm

### SBBD-00001

#### Q.HOME CORE FLOOR MOUNT

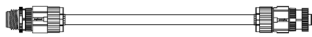


##### Dimension

463 (W) × 385 (D) × 937 (H)mm

### SBBD-00002

#### Q.HOME CORE BMS EXTENSION CABLE 1M



##### Cable length

1,050 ± 10 mm

##### Connectors

M12A-12BMMA-SL7001, M12A-12BFFA-SL7001

##### Cable area

24 AWG (0.205 mm<sup>2</sup>)

### SBED-00033

#### Q.HOME CORE BATTERY POWER CABLE 1,6M



##### Cable length

1,700 ± 10 mm

##### Connectors

PWL-03BFMA-TL7001, PWL-03BFMA-TL7001

##### Cable area

10 AWG (5.26 mm<sup>2</sup>)

### SBED-00034

#### Q.HOME CORE POWER EXTENSION CABLE 2,6M



##### Cable length

2,700 ± 10 mm

##### Connectors

PWL-03BFMA-TL7001, PWL-03BFMA-TL7001

##### Cable area

10 AWG (5.26 mm<sup>2</sup>)

### SBED-00036

#### Q.HOME CORE CT SENSOR EXTENSION CABLE 20M



##### Cable length

20,000 ± 50 mm

##### Connectors

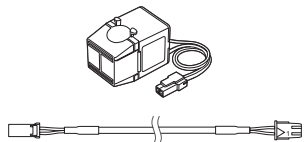
SLR-02VF, SMH250-02

##### Cable area

20AWG (0.518 mm<sup>2</sup>)

### SBBD-00003

#### Q.HOME CORE CT WITH CABLE 3M



##### Cable length

3,010 ± 10 mm

##### Connectors

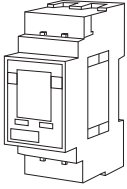
SLR-02VF, SMH250-02

##### Cable area

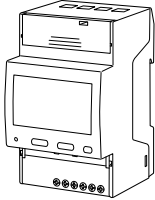
20 AWG (0.518 mm<sup>2</sup>)

##### CT ratio

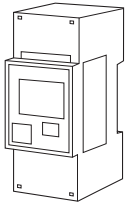
100A/33.3mA

**SBER-00025****ENERGY METER (EM112)**

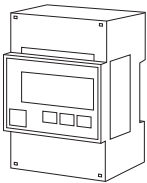
Phase	Single
Type	Direct
Voltage	230 V
Current	5 (100) A

**ENERGY METER (EM540)**

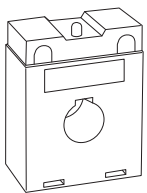
Phase	Three
Type	Direct
Voltage	3 × 230 V / 400 V
Current	0.25 (65) A

**SBER-00028****ENERGY METER (DDSU666-CT)**

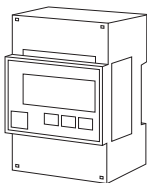
Phase	Single
Type	CT (1 Unit)
Voltage	220 V / 230 V
Current	1.5 (6) A

**SBER-00029****ENERGY METER (DTSU666-CT)**

Phase	Three
Type	CT (3 Unit)
Voltage	3 × 230 V / 400 V
Current	1.5 (6) A

**SBER-00030****CT FOR ENERGY METER**

CT ratio	200 A / 5 A
Type	Through hole

**SBER-00101****ENERGY METER (DTSU666)**

Phase	Three
Type	Direct
Voltage	3 × 230 V / 400 V
Current	5 (80) A