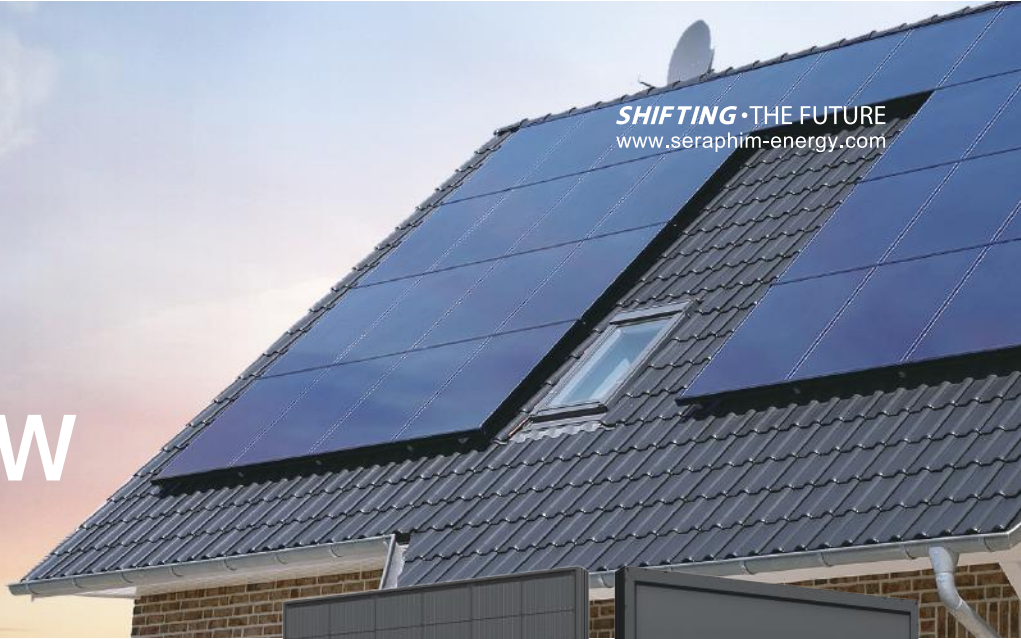








Nebula 390-405w

Lightweight modules



PERC | **182mm**

• **PERC MODULE ADVANTAGE**

-  Less mismatch to get more power
-  Less power loss by minimizing the shading impact
-  Excellent low-light performance
-  Low BOS and LCOE
-  3 times EL test to ensure best quality
-  Superior load capacity 2400 Pa wind load & 5400 Pa snow load

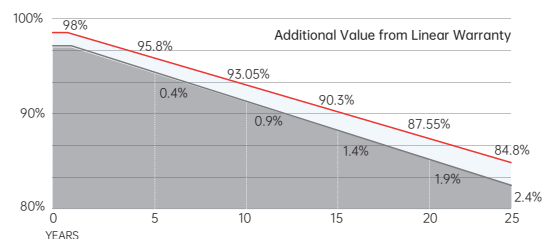
• **QUALITY SYSTEM**
ISO9001 / ISO14001 / ISO45001

• **PRODUCT CERTIFICATION**



• **INSURANCE**
PICC

• **WARRANTY**



15 YEARS Guarantee on product material and workmanship

25 YEARS Linear power output warranty



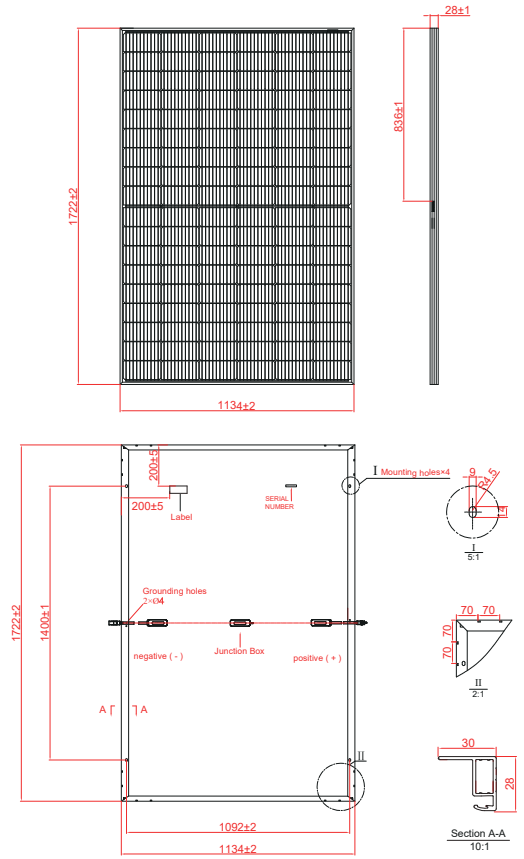
SERAPHIM ENERGY GROUP CO., LTD.

Add: NO.18, Shichuan Road, Jinzhai Economic Development Zone, Lu'an City, Anhui Province
Tel: +86-564-7736177 Email: info@seraphim-energy.com

Electrical Characteristics

Module Type	SRP-390-BMD-HV		SRP-395-BMD-HV		SRP-400-BMD-HV		SRP-405-BMD-HV	
	STC	NOCT	STC	NOCT	STC	NOCT	STC	NOCT
Maximum Power at STC (Pmp)	390	294	395	298	400	301	405	304
Open Circuit Voltage (Voc)	36.90	34.47	37.01	34.56	37.12	34.64	37.22	34.73
Short Circuit Current (Isc)	13.40	10.83	13.50	10.91	13.60	10.99	13.70	11.07
Maximum Power Voltage (Vmp)	30.59	28.56	30.69	28.68	30.81	28.82	30.93	28.91
Maximum Power Current (Imp)	12.78	10.29	12.88	10.37	12.99	10.44	13.10	10.51
Module Efficiency at STC(ηm)	19.97		20.23		20.48		20.74	
Power Tolerance(W)	(0, +4.99)							
Maximum System Voltage	1500V DC							
Maximum Series Fuse Rating	25 A							

STC: Irradiance 1000 W/m² module temperature 25°C AM=1.5
Power measurement tolerance: +/-3%



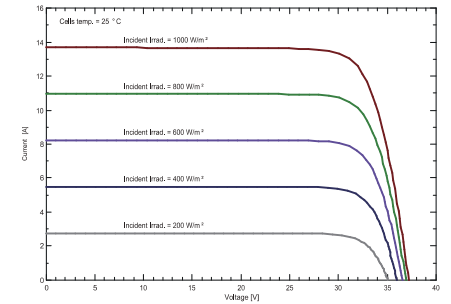
Temperature Characteristics

Pmax Temperature Coefficient	-0.34 %/°C
Voc Temperature Coefficient	-0.26 %/°C
Isc Temperature Coefficient	+0.05 %/°C
Operating Temperature	-40 ~ +85 °C
Nominal Operating Cell Temperature(NOCT)	45±2 °C

Mechanical Specifications

External Dimensions	1722 x 1134 x 28 mm
Weight	21.0 kg
Solar Cells	PERC Mono (108 pcs)
Front Glass	3.2mm AR coating tempered glass, low iron
Frame	Black anodized aluminium alloy
Junction Box	IP68, 3 diodes
Output Cables	4.0mm ² , 250mm(+)/350mm(-) or Customized Length
Mechanical Load	Front side 5400Pa/ Rear side 2400Pa

I-V Curve



Packing Configuration

	1722 x 1134 x 28 mm	
Container	20'GP	40'HQ
Pieces per Pallet	39	39
Pallets per Container	6	26
Pieces per Container	234	1014

For details, please consult SERAPHIM.

