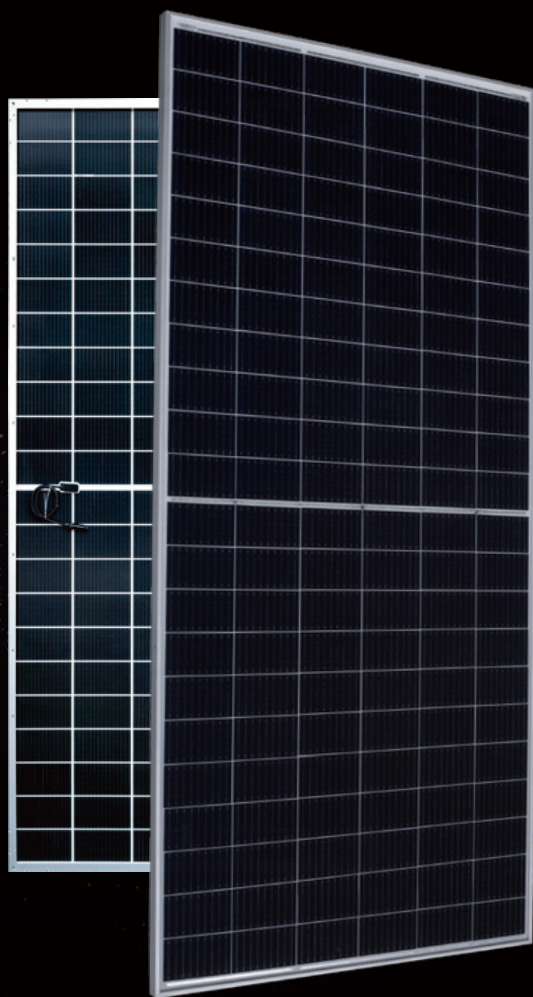




AESOLAR

since 2003



METEOR

More power, less degradation

30
years
Performance
Warranty

15
years
Product
Warranty

595W-615W

AE CMER-132BDS Series

N-TYPE TOPCON TECHNOLOGY PV MODULES
HALF-CUT CELLS • BIFACIAL • DOUBLE-GLASS

www.ae-solar.com

Ver. 24.1.1



132

HALF
CELLS



210R
mm

CELL
SIZE



LID
RESISTANT



PID
RESISTANT



SALT CORROSION
RESISTANT



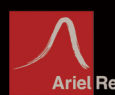
SAND
RESISTANT



AMMONIA
RESISTANT



HIGHLY STABLE
AND TOUGH



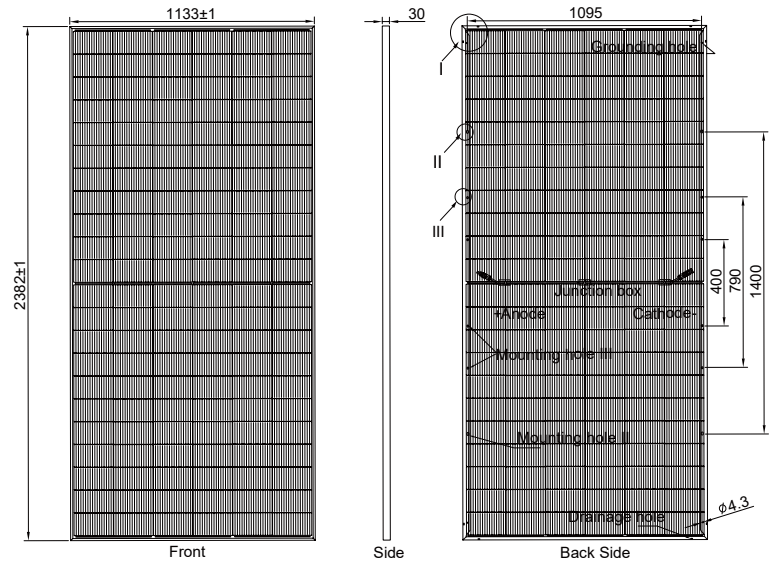
AE CMER-132BDS Series 595W-615W



N-TYPE TOPCON TECHNOLOGY PV MODULES
HALF-CUT CELLS • BIFACIAL • DOUBLE-GLASS

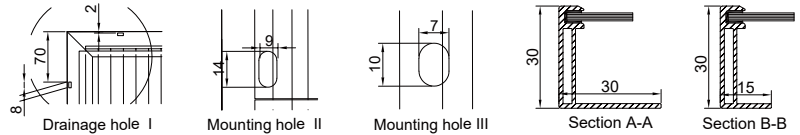
Mechanical and design specification

Cell type	N-type TOPCon Technology, Half-cut cells, 210R mm
No. of cells	132
Bifaciality	80 ± 5%
Front cover	2.0 mm glass, high transmission, AR coated, tempered
Encapsulation	POE
Back cover	2.0 mm white glazed glass, tempered
Junction box	IP68 rated, 3 Bypass Diodes
Frame	35 mm anodized Aluminium alloy
Cable	1 x 4 mm ² , 350 mm length or customized
Connectors	MC 4 / MC 4 compatible
Dimension	2382 mm x 1133 mm x 30 mm
Weight	33.7 kg
Hail resistance	Max. Ø 25 mm at 23 m/s
Wind load	2400 Pa or 244 kg/m ²
Snow load	5400 Pa or 550 kg/m ²



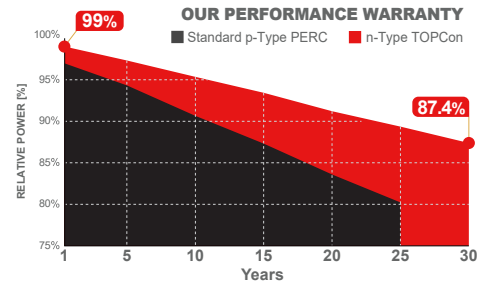
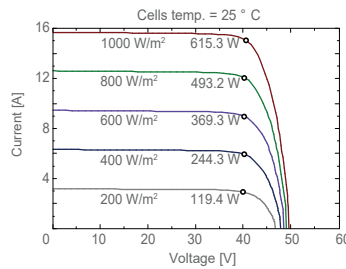
Packaging information

Packaging configuration	36 pcs / pallet
Loading capacity	720 pcs / 40 HQ
Size / Pallet	1160 mm x 1140 mm x 2500 mm (upright)
Weight	1241 kg / pallet



Temperature ratings

Operating temperature	(°C)	-40 to +85
Temp.coefficient of P _{max}	(%/°C)	-0.30
Temp.coefficient of V _{oc}	(%/°C)	-0.24
Temp.coefficient of I _{sc}	(%/°C)	0.040
Nom. operating temp. NOCT	(°C)	43 ± 2



Electrical specifications (STC*): AE595CMER-132BDS AE600CMER-132BDS AE605CMER-132BDS AE610CMER-132BDS AE615CMER-132BDS

		AE595CMER-132BDS	AE600CMER-132BDS	AE605CMER-132BDS	AE610CMER-132BDS	AE615CMER-132BDS
Nominal Max. Power	P _{max} (Wp)	595	600	605	610	615
Maximum operating voltage	V _{MPP} (V)	40.00	40.30	40.50	40.80	41.10
Maximum operating current	I _{MPP} (A)	14.89	14.91	14.94	14.95	14.96
Open-circuit voltage	V _{oc} (V)	48.10	48.40	48.70	49.00	49.30
Short-circuit current	I _{sc} (A)	15.76	15.89	15.93	15.96	15.99
Module efficiency	η (%)	22.05	22.23	22.42	22.60	22.79
Power tolerance	(W)			0~+5		
Maximum system Voltage	(V)			1500		
Maximum series fuse rating	(A)			35		

*STC: Standard test conditions (Irradiance 1000 W/m², Cell temperature 25°C and air mass of AM1.5), measurement tolerance P_{max}: ±3%

Electrical specifications (NMOT*): AE595CMER-132BDS AE600CMER-132BDS AE605CMER-132BDS AE610CMER-132BDS AE615CMER-132BDS

		AE595CMER-132BDS	AE600CMER-132BDS	AE605CMER-132BDS	AE610CMER-132BDS	AE615CMER-132BDS
Nominal Max. Power	P _{max} (Wp)	454	458	463	467	470
Maximum operating voltage	V _{MPP} (V)	37.60	37.80	38.00	38.20	38.40
Maximum operating current	I _{MPP} (A)	12.08	12.12	12.18	12.23	12.24
Open-circuit voltage	V _{oc} (V)	45.60	45.90	46.20	46.50	46.80
Short-circuit current	I _{sc} (A)	12.70	12.79	12.85	12.88	12.88

*NMOT: Normal Module Operating Temperature (Irradiance 800 W/m², Ambient temperature 20°C, air mass of AM1.5 and wind speed of 1 m/s)

The specifications and characteristics contained in this datasheet may deviate slightly from our actual products due to the product developments and uncertainty of measurement devices. The specifications included in the datasheet are subject to change without prior notice.