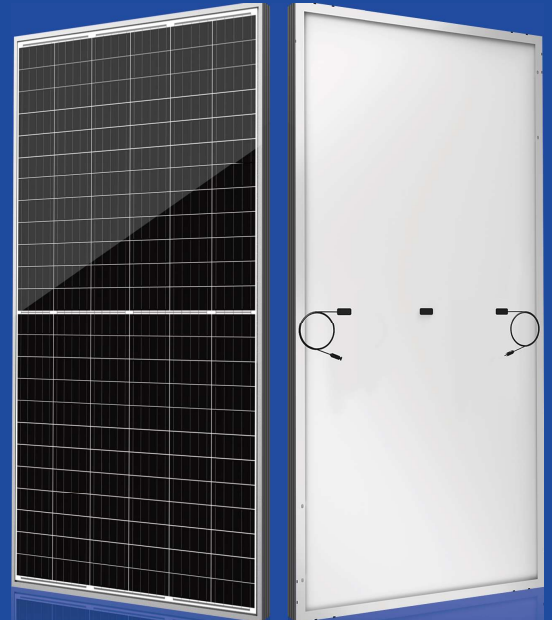


# HG-T Series

Multiple upgrades were forged into one

## 445-465 w



### • HG-T SERIES

HG group redefined the high-efficiency module serie by integrating 166mm silicon wafers with PERC and half-cut technologies.HG group panel acmbined creative technology effectively and extremely improved the module efficiency and power out.

### • KEY FEATURES

- Less mismatch to get more power
- Less power loss by minimizing the shading impact
- Competitive low light performance
- 3 times EL test to ensure best quality
- Reducing costs and increasing returns are important goals for businesses
- Outstanding reliability proven for stringent environment condition :
  - .Sand,acid,salt,and hail stones
  - .2400pa wind load and 5400pa snow load
  - .Anti-PID

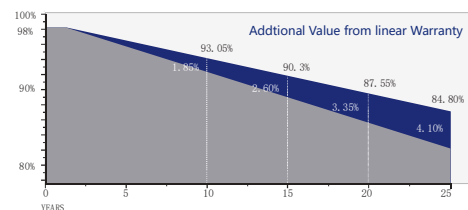
### • QUALITY SYSTEM

ISO19001 / ISO14001 / ISO45001

### • PRODUCT CERTIFICATION



### • WARRANTY



Guarantee on product material and workmanship



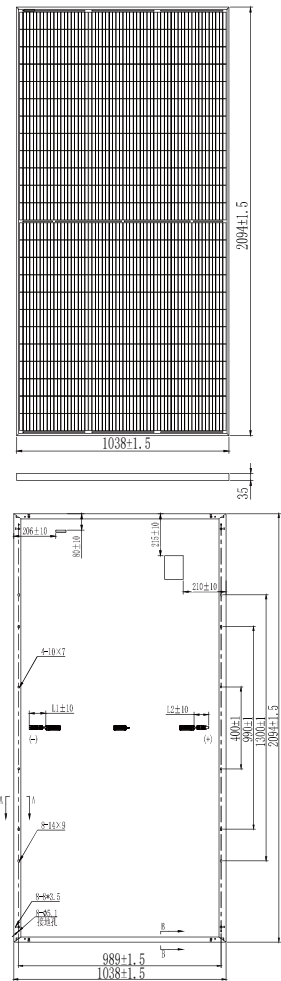
Linear power output warranty

## Electrical Characteristics

Module Type	HGT445-72BW		HGT450-72BW		HGT455-72BW		HGT460-72BW		HGT465-72BW	
	STC	NMOT	STC	NMOT	STC	NMOT	STC	NMOT	STC	NMOT
Maximum Power $P_{mp}$	445W	330W	450W	333W	455W	337W	460W	342W	465W	346W
Open Circuit Voltage- $V_{oc}$	49.9V	47.2V	50.0V	47.2V	50.1V	47.3V	49.7V	47.1V	49.9V	47.3V
Short Circuit Current- $I_{sc}$	11.72A	9.46A	11.83A	9.55A	11.96A	9.66A	11.78A	9.51A	11.85A	9.56A
Max Power Voltage- $V_{mp}$	41.0V	38.7V	41.1V	38.8V	41.4V	38.9V	41.9V	39.7V	42.1V	39.9V
Max Power Current- $I_{mp}$	10.86A	8.53A	10.96A	8.58A	10.99A	8.66A	10.99A	8.61A	11.05A	8.67A
Module Efficiency STC- $\eta_m$	20.5%		20.7%		20.9%		21.2%		21.4%	
Power Tolerance(W)	0~+5W									
Maximum System Voltage	1500V DC									
Max Serie Fuse Rating	20A									

STC: irradiance 1000W/m<sup>2</sup> module temperature 25°C AM=1.5  
 NMOT: irradiance of 800W / m<sup>2</sup>, ambient temperature 20°C, and wind speed 1m / s

## Technical drawings



## Temperature characteristic

$P_{max}$ Temperature Coefficient	-0.35 %/° C
$V_{oc}$ Temperature Coefficient	-0.26 %/° C
$I_{sc}$ Temperature Coefficient	+0.047 %/° C
Operating Temperature	-40~+85 ° C
Nominal module operation temperature	45 ± 2 ° C

## Mechanical Specifications

External Dimension	2094*1038*35mm
Weight	23.5kg
Solar Cell	Mono crystalline 166*83mm, 144 (6*24)
GLASS	High transmission tempered glass
Frame	Anodized aluminum alloy
Junction Box	IP68, 3diodes, MC4 compatible
Output Cables	4.0mm <sup>2</sup> , 200mm(+)/300mm(-) or Customized Length
Mechanical Load	Front side 5400pa/Back side 2400pa
Packaging Configuration	31pcs / box, 682pcs / 40' HQ Container

