

Innovative All-in-one ESS

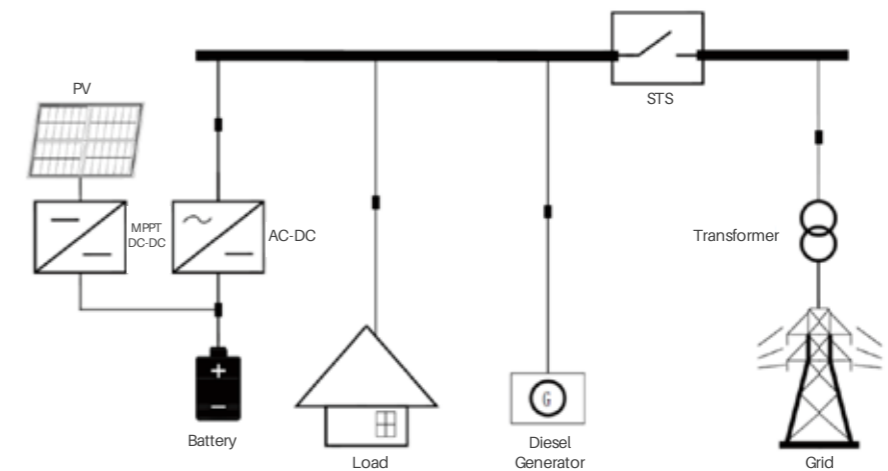


KEY FEATURES

- High Integration**
Highly integrated ESS with outdoors cabinet design provides high protection class
- Safe and Reliable**
Three level BMS structure for good cooperation and better operation performance
- Flexible**
Supports system parallel connection and easy for expansion
- Pre-Engineered System**
Easy for on-site installation and saves the cost

DIAGRAM

Outdoor Cabinet ESS for micro-grid island, hotel, farm and other suitable applications
PCS Power optional power range: 30~200KW
Battery optional capacity range:100~400KWh
Be suitable for 2~4 hours back up



SPECIFICATION

System Type	Optim US-B1-100
General Data	
Dimension(W*H*D mm)	1500*2320*1107.5
Weight(Kg)	2600 (incl. battery)
Working Temperature Range (°C)	-20~60
Protection Class	IP54
Altitude	3000
Humidity	0~95%
Fire Extinguishing	Perfluoro
Air Conditioner	2kW
Anti-Corrosion	C3 (Optional upgrade to C5)
Authentication level	CE/IEC62619/UN38.3/UN3536
Battery Data	
Battery Type	Li-ion (LFP)
Nominal Capacity (kWh)	113.7
Battery Item	Powercube-M1C
Battery Module Qty.	24
DC Voltage Range(V)	696~864
Max. Operation Current (A)	148
Efficiency	95%

SPECIFICATION

System Type	Optim US-B1-100
PCS DC/AC Data On-grid Mode	
Rated AC Power (KW)	60 (expandable to 4*60)
Rated AC Output Voltage(V)	400
Rated AC Output Frequency (Hz)	50/60
Max. AC Current(A)	86
Overload Capacity	110%@1min
AC PF	0.8 (leading) ~0.8 (lagging)
THDi	≤ 3%
Isolation Type	Non-isolation
Peak Efficiency	98.5%
Unbalanced capacity	100%
PCS DC/AC Data Off-grid Mode	
Output voltage accuracy	≤ 1%
Unbalanced capacity	100%
Voltage harmonic distortion	< 2% @line load
Overload capacity	≤ 110%
PV DC/DC Data Parameter	
Rated Power(kW)	60 (expandable to 4*60)
PV Input Voltage(Vdc)	200 - 850
Max. current(A)	100
Max. Efficiency(%)	98.5%
Operation Mode	
On/off-grid Switch	Optional STS module, switching time<20ms
EMS	10 inch LCD Touch Panel Self-Consumption; Micro-grid control; Demand response; Remote Control; Time of use;
Communication Type	Modbus TCP/IP